



Watered**Gardens**

Ministries



Testimony of the Month

Marilyn





Testimony of the Month | Jan. 2023

Riley McGuire





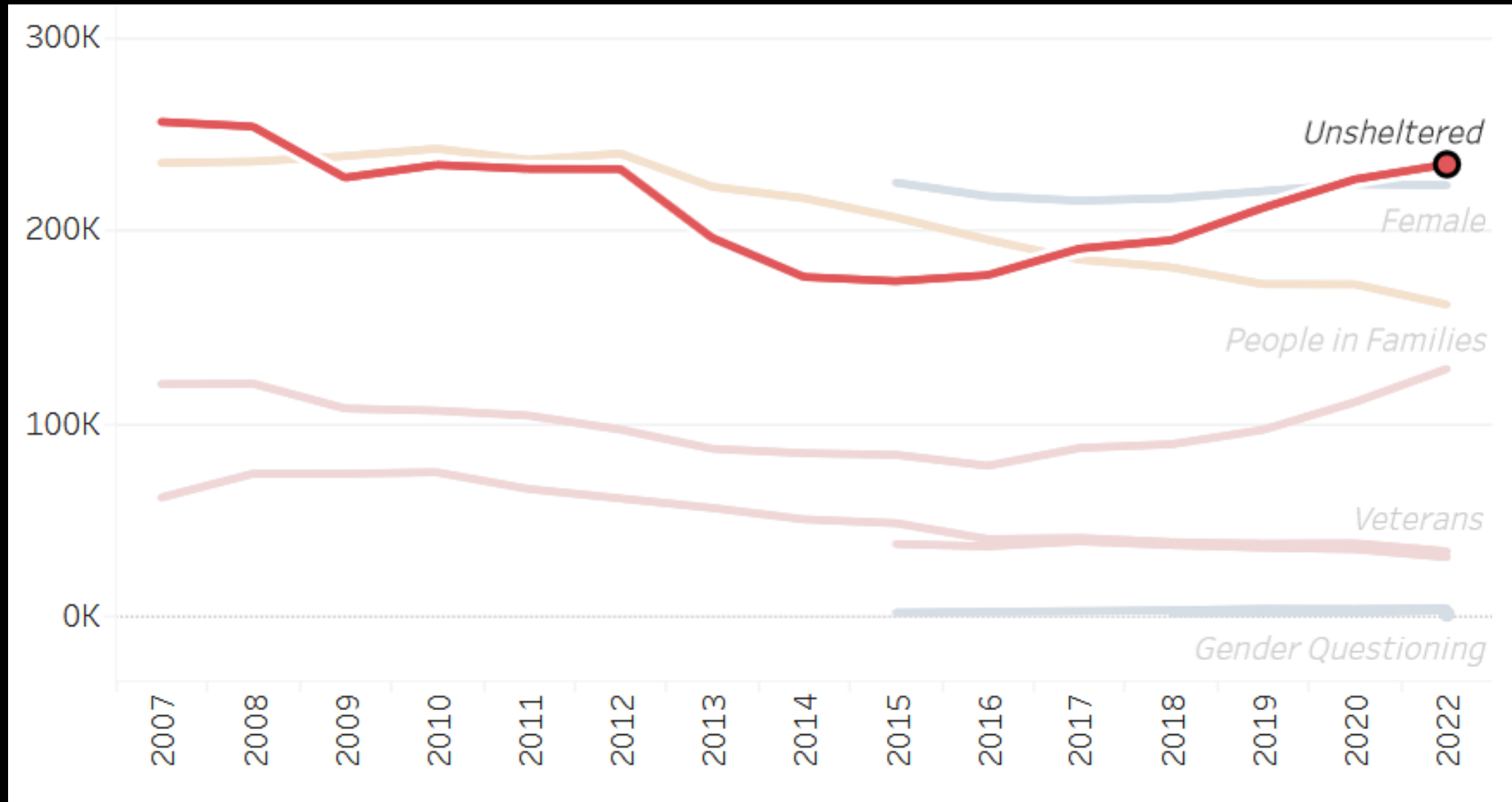
THE
WORTH SHOP
WATERED
ESTABLISHED BY
WORTH

THRIFT DONATIONS →
← RECYCLE DONATIONS





Unsheltered homelessness up by 35%





DEPENDENCY



APPRECIATION

DEPENDENCY



APPRECIATION

ANTICIPATION

DEPENDENCY



APPRECIATION

ANTICIPATION

EXPECTATION

DEPENDENCY



APPRECIATION

ANTICIPATION

EXPECTATION

ENTITLEMENT

DEPENDENCY



5:59 | 46°

TWEET ABOUT PORTLAND HOMELESSNESS GOES VIRAL

» PORTLAND


**CITY IN
CRISIS**

KATU 2 abc
On Your Side

⏪ ⏩ ⚙️

0:03 / 8:42





“Charity is injurious
unless it helps the recipient become
independent of it.”

J.D. Rockefeller

Misunderstanding

The Problem

Misunderstanding the problem results in misdirected compassion that fuels a frenzy of charity without ever freeing people from poverty.

The Person

Misunderstanding the human person relegates him to position of permanent receiver rather than the producer he's intended to be.

Our Part

Misunderstanding our part results in us *doing for* more than *being with*, perpetuating a fruitless paternalistic co-dependency.

What to do?

Reach

Educate

Equip



Reach

Educate

Equip

||| TRUE CHARITY
REAL RESULTS
WEBINAR SERIES

How to Help Clients Transition off Welfare



ERIC COCHLING, Georgia Center for



TRUE CHARITY
REAL RESULTS
WEBINAR SERIES

Measuring Outcomes: Lessons from the Front Lines



With Megan Rose
CEO, Better Together



Reach

Educate

Equip



FOUNDATIONS WORKSHOP

Interactive workshop for poverty fighters

Experience a day full of learning
life-changing charity principles
and practices for nonprofit,
church and community leaders.

truecharity.us/workshop

Reach

Educate

Equip

A photograph of a conference room during a summit. People are seated at tables, some facing away from the camera. A large screen in the background displays the event title. The text '2024 TRUE CHARITY SUMMIT' is overlaid in large white font.

2024 TRUE CHARITY SUMMIT

Reach

Educate

Equip



IT'S AN INCREASINGLY COMMON SCENE...

HOW SHOULD YOU RESPOND?

The answer...it depends.

Your response to common situations like these could end up helping or hurting individuals in need. True Charity University empowers you to ensure your compassion leads to real results.

[Start Learning for Free](#)

[View Additional Courses](#)

university ,truecharity.us

**IF YOU
HAND ME
A MEAL
TODAY...**

A person wearing a dark jacket is holding a piece of torn, brown cardboard. The cardboard has the words "WHAT ABOUT TOMORROW?" written on it in black, hand-painted capital letters. The person's hands are visible at the bottom corners of the sign.

**WHAT
ABOUT
TOMORROW?**

 **TRUECHARITY.us/GiveBetter**

**YOUR CASH
WON'T GET
ME OFF THIS
CORNER.**



TRUECHARITY.us/GiveBetter

**YOUR CASH
ISN'T THE
ANSWER.**

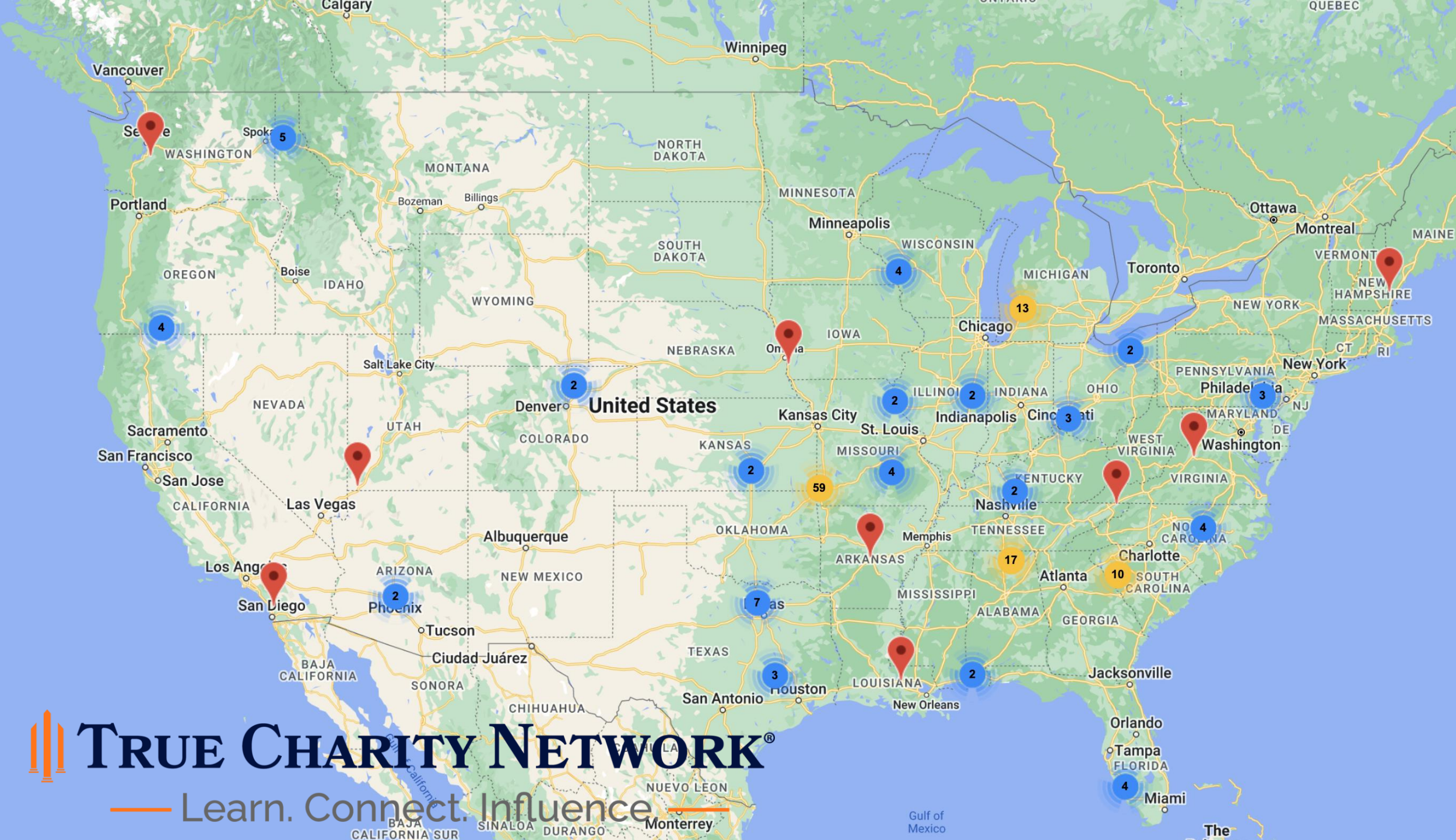


TRUECHARITY.us/GiveBetter

A person is sitting on a sidewalk, wearing a tan jacket, blue jeans, and brown boots. They are holding a large cardboard sign that says "WHAT GIVES?". A green and red striped bag is next to them. The background is a dark, corrugated metal wall.

**NEITHER OF
US WANTS
ME ON THIS
CORNER.**

 **TRUECHARITY.us/GiveBetter**



TRUE CHARITY NETWORK®

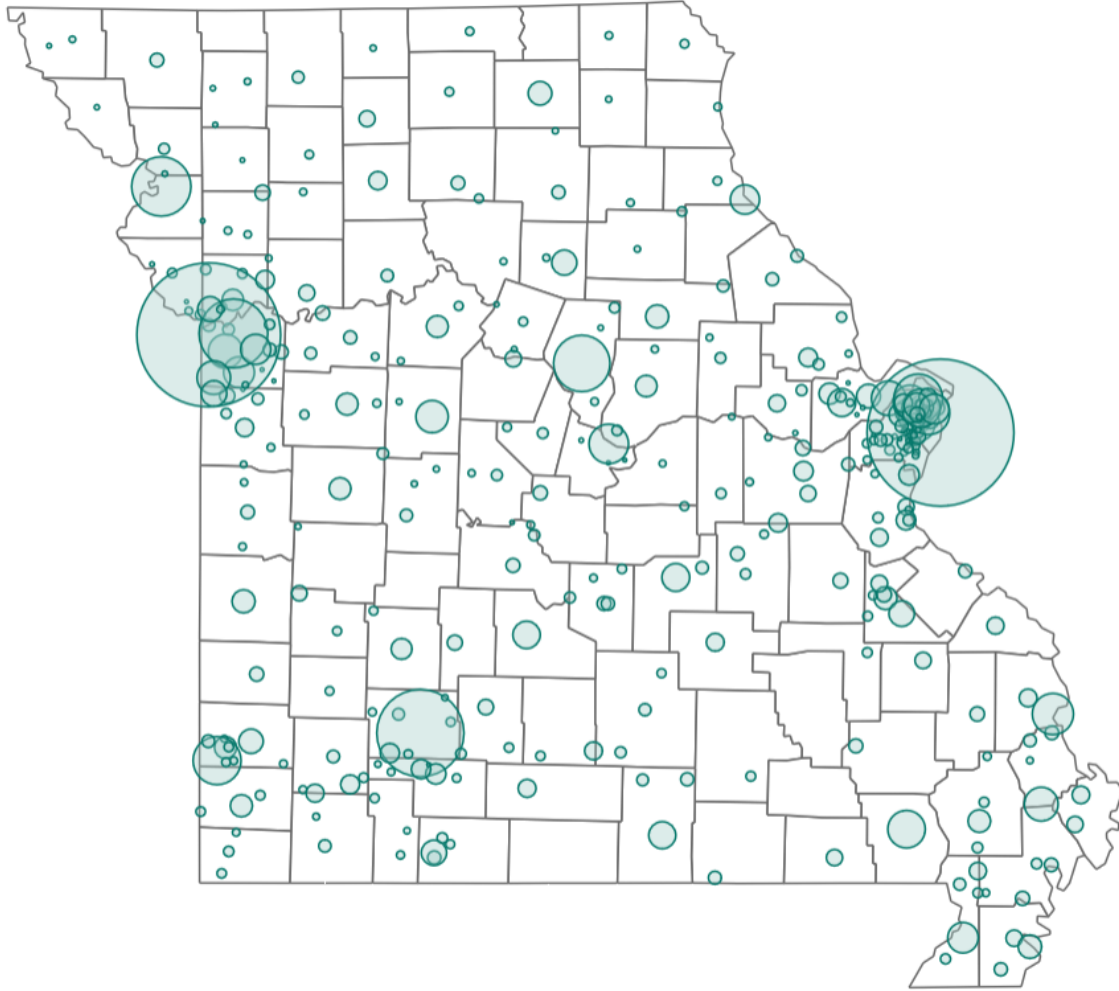
— Learn. Connect. Influence. —

Policy Thoughts

Think Local

Favor Work

- Equip cities with DSS Data



	Total Households	Benefit	Avg Annual Benefit per Household
Kansas City	51,032	\$155,908,699	\$3,055
Springfield	18,843	\$50,745,855	\$2,693
Independence	12,337	\$36,319,307	\$2,944
St. Joseph	8,473	\$25,665,679	\$3,029
Columbia	7,939	\$22,067,865	\$2,780
Florissant	6,314	\$19,257,104	\$3,050
Joplin	5,930	\$15,285,540	\$2,578
Jennings	4,658	\$11,952,101	\$2,566
Cape Girardeau	4,212	\$12,341,516	\$2,930
Jefferson City	3,843	\$11,242,327	\$2,925
Ferguson	3,956	\$11,951,418	\$3,021
Poplar Bluff	3,535	\$9,820,322	\$2,778
St. Charles	3,182	\$8,565,072	\$2,692
Hazelwood	3,187	\$9,450,967	\$2,965
Raytown	3,130	\$8,700,345	\$2,780
Sikeston	2,900	\$8,351,587	\$2,880
Grandview	3,010	\$8,646,140	\$2,872
University City	2,859	\$7,782,170	\$2,722
Sedalia	2,650	\$7,758,018	\$2,928
Lee's Summit	2,569	\$8,028,473	\$3,125
Kennett	2,276	\$7,112,796	\$3,125
Blue Springs	2,419	\$7,406,148	\$3,062
Bellefontaine N..	2,384	\$7,056,896	\$2,960
Hannibal	2,143	\$6,288,986	\$2,935
O'Fallon	2,136	\$6,227,047	\$2,915

<https://dss.mo.gov/rr.htm>

Policy Thoughts

Think Local

Favor Work

- Equip cities with DSS Data
- Deregulate exchange for service

... "employee" shall not include any person performing services for board, lodging, aid, or sustenance received from any religious, charitable or relief organization...

MO SB1, 2013

Policy Thoughts

Think Local

Favor Work

- Equip cities with DSS Data
- Deregulate exchange for service
- Ensure tax credit qualified charitable organizations are effective
- Support work requirements for welfare
- Consider regulatory sandboxes that support subsidiarity



||| TRUE
CHARITY

James Whitford
James@truecharity.us