

Grain Belt Express Clean Line

CLEAN LINE
ENERGY PARTNERS

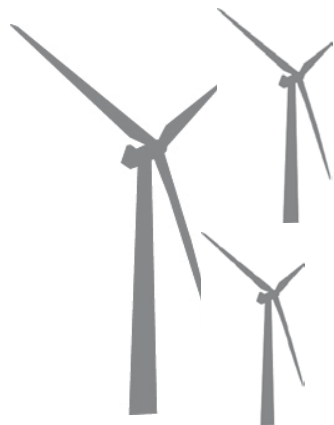


Clean Line Energy

Focus, team and capital to connect renewable energy to demand

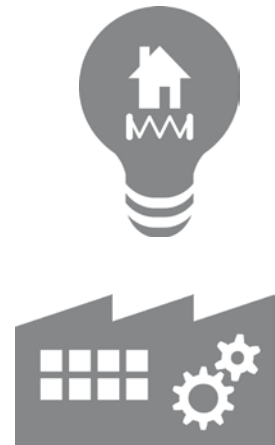
- Focusing on connecting the best renewable energy resources in the country with consumers
- Seeking to develop, own and operate long haul, high voltage direct current (HVDC) transmission lines across the United States, helping to solve one of the most vexing challenges to a cleaner energy future
- Experienced management team, partners and investors with long-term focus and track record of success in transmission and energy project development

Strong wind resources

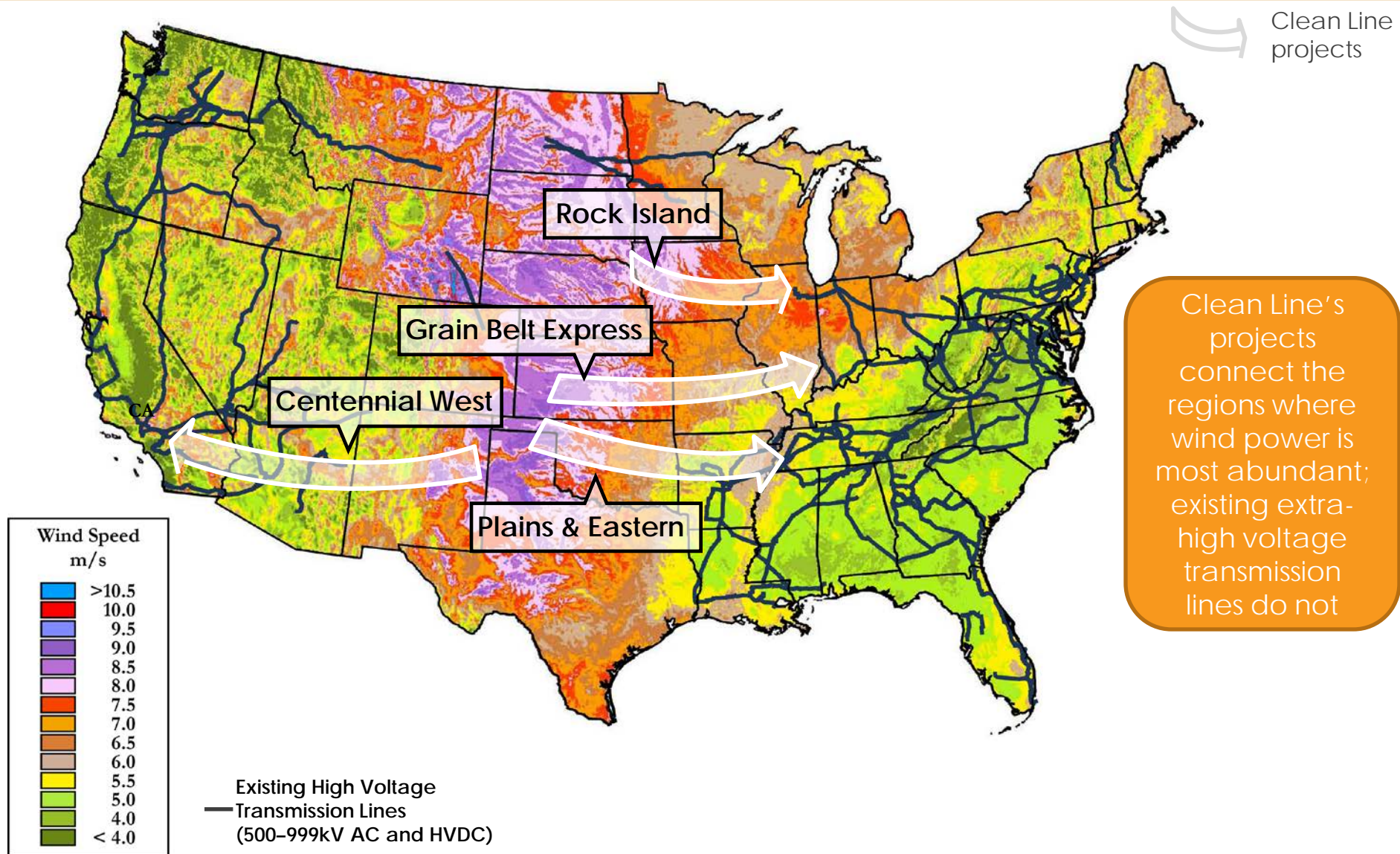


HV→DC

Large demand centers



Transmission investment is required to connect the best wind resources to load centers



HVDC brings economic, policy and electric reliability benefits

More efficient – Over long distances, DC transfers more power with lower line losses compared to AC lines.

Smaller footprint – DC requires a narrower right of way than an equivalent AC configuration.

Lower cost – Less infrastructure and lower line loss means lower cost and lower price for renewable power.

Improved reliability – Gives operator complete control over power flow.

Merchant model – Clean Line will fund the development costs of the transmission projects and will sell transmission capacity to wind generators and/or purchasers.

AC **3000-4000 MW Capacity** **DC**



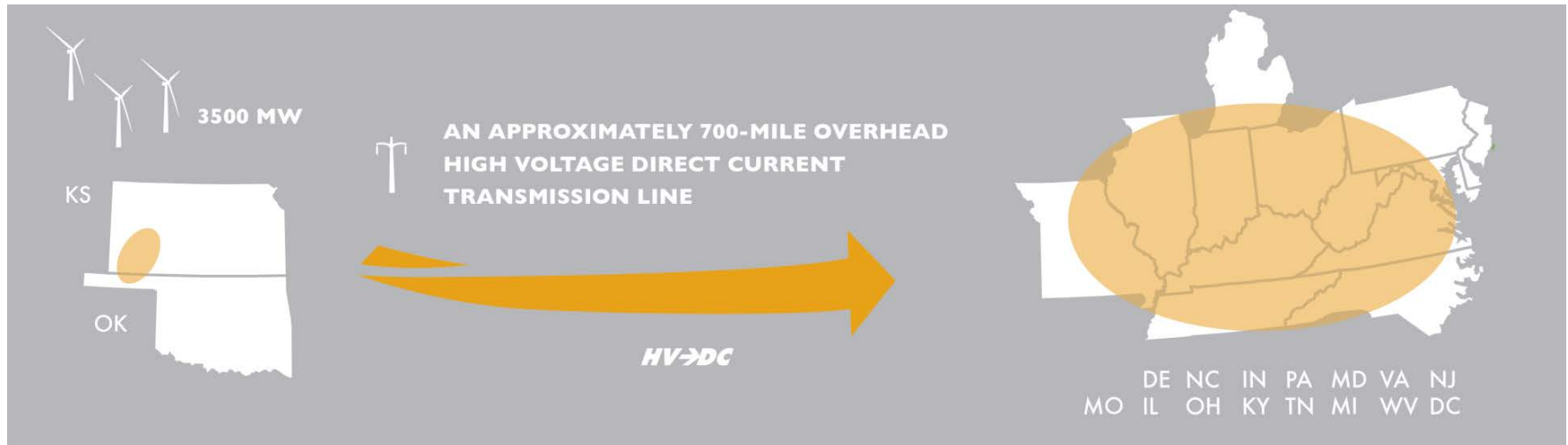
Three 500 kV lines
600 foot ROW



One \pm 500 kV bipole
150-200 foot ROW

Grain Belt Express Clean Line will deliver wind energy from western Kansas to Missouri and points farther east

GRAIN BELT EXPRESS CLEAN LINE



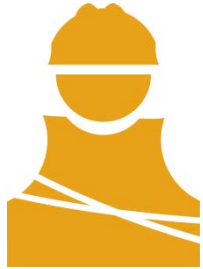
KEY MILESTONES

STATUS

Regulatory Approvals	<ul style="list-style-type: none"> • Kansas Corporation Commission unanimously approved application to conduct business as a utility on Dec. 7, 2011
Interconnection	<ul style="list-style-type: none"> • More than 200 support letters submitted
Federal Procedure	<ul style="list-style-type: none"> • Interconnection studies underway in Missouri (MISO) and Indiana (PJM) • Reliability studies with SPP in progress
Outreach	<ul style="list-style-type: none"> • Applied for federal siting authority pursuant to Sec.1222 of 2005 Energy Policy Act
Environmental & Routing	<ul style="list-style-type: none"> • More than 300 in-person meetings with community leaders and interested parties • Stakeholders from 52 Kansas and Missouri counties attended 24 summer roundtable meetings • Collaboration Agreement with Nature Conservancy's Missouri Chapter • Potential route network established; meetings ongoing in study area

Grain Belt Express Clean Line will create significant benefits

ECONOMIC BENEFITS



5,000+

CONSTRUCTION JOBS



MILLIONS
PER YEAR

PROPERTY TAX REVENUE



500+

OPERATIONS JOBS



1.4 MILLION PER
YEAR

HOMES POWERED



\$7 BILLION

NEW WIND FARM
INVESTMENTS

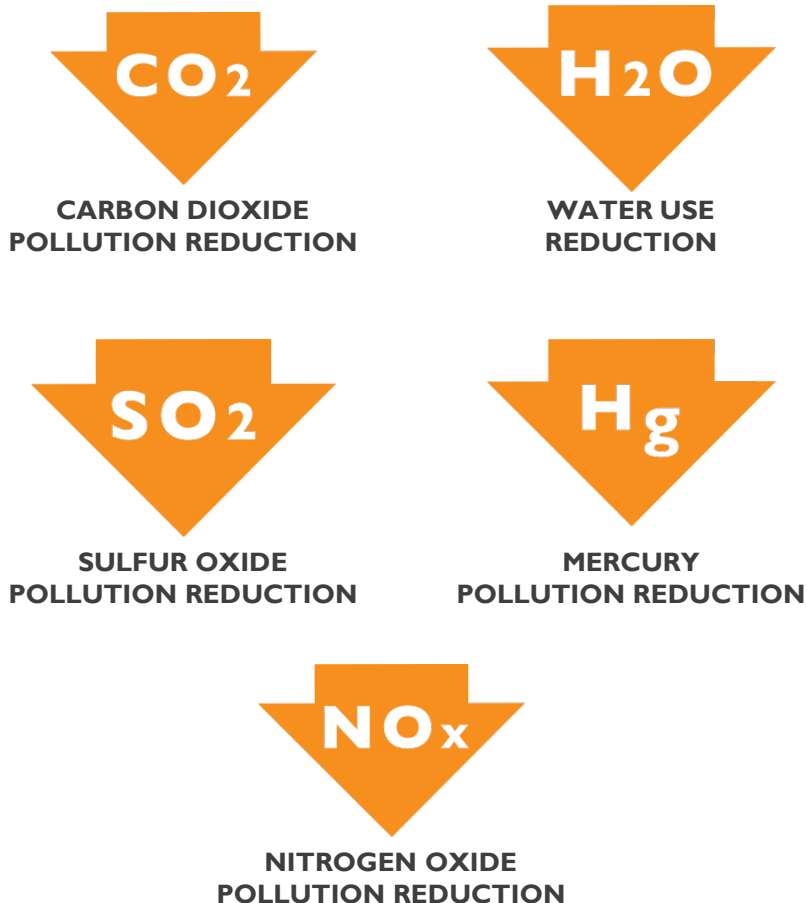


INCREASED MARKET
COMPETITION

CONSUMER BENEFITS

Grain Belt Express Clean Line offers significant health and environmental benefits

ENVIRONMENTAL BENEFITS

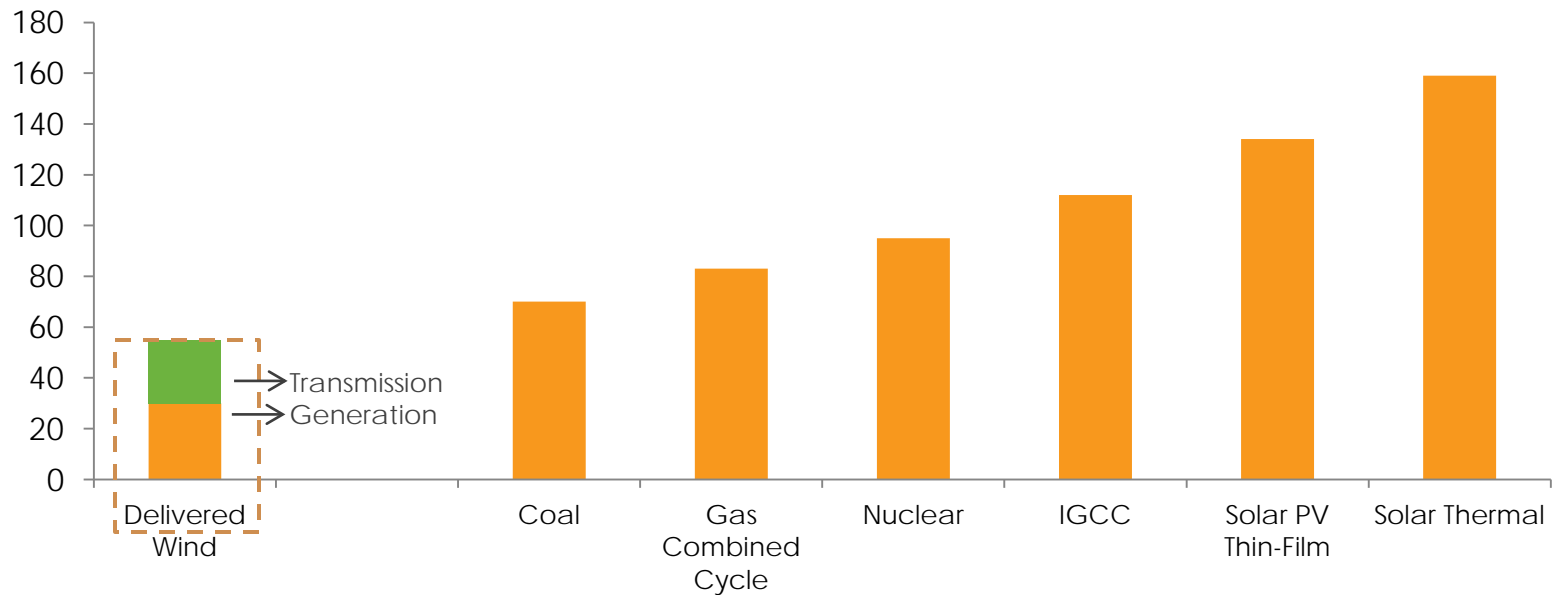


- Clean Line transmission projects will **integrate thousands of megawatts of wind energy** into the nation's electric grid.
- Wind energy generation allows other generators to **run less and burn less fuel**, eliminating the need for the equivalent amount of energy derived from fossil fuels, thereby **reducing pollution**.

Wind energy is less expensive than alternatives and forecasted to continue to increase in capacity

Levelized Cost of Energy¹

\$ / MWh

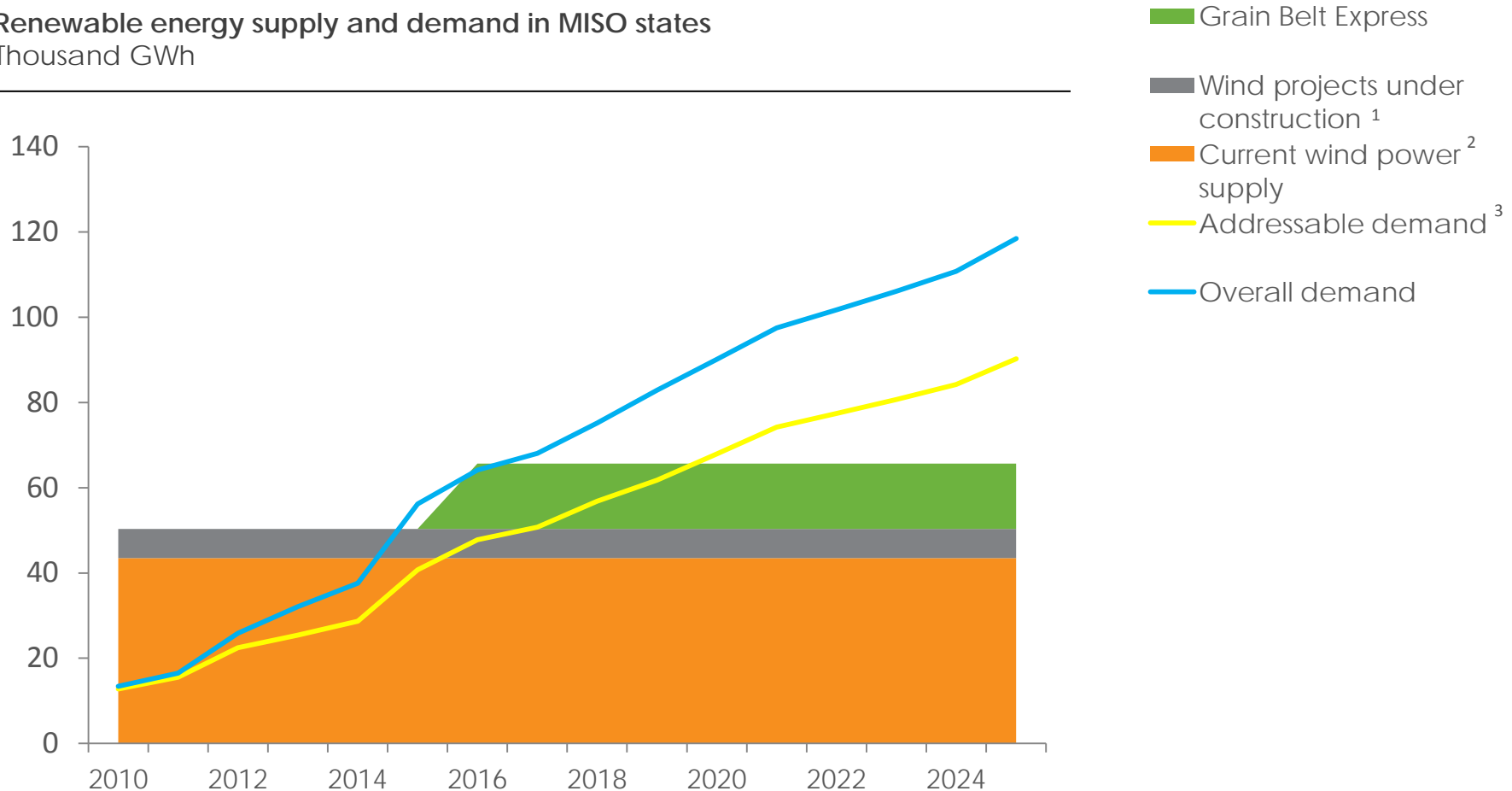


1. Mid-point of Lazard's LCOE estimates, except for lower-end for coal (no carbon capture). Wind includes lower-end LCOE estimate (for best quality wind) + \$25/MWh transmission cost

Source: Lazard;

Grain Belt Express could also help meet renewables demand in the MISO states

Renewable energy supply and demand in MISO states
Thousand GWh



1. Wind projects currently under construction within the Midwest ISO states
2. Energy from existing wind projects within the Midwest ISO
3. Demand for renewable power that can be addressed by Grain Belt Express

Source: EIA; DSIRE; AWEA

Development of the Grain Belt Express is underway

Using a methodical, long range development process

Key Activities for 2012-2013

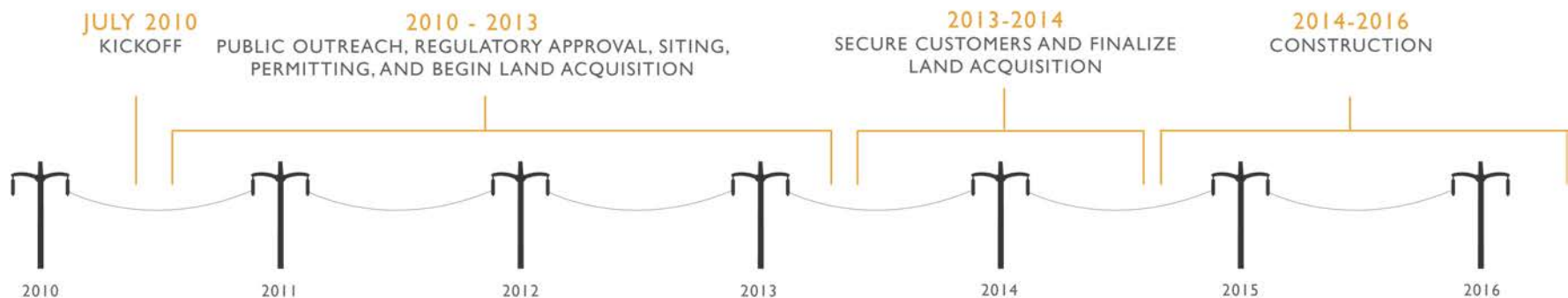
Stakeholder Outreach and Siting

- Seek public input
- Continue environmental studies
- Refine potential route network
- Identify converter station locations
- Pursue regulatory approvals and permits

Key Regulatory Agencies and Organizations

- Kansas Corporation Commission
- Missouri Public Service Commission
- Illinois Commerce Commission
- Indiana Utility Regulatory Commission
- Regional Transmission Organizations (SPP, MISO, PJM)

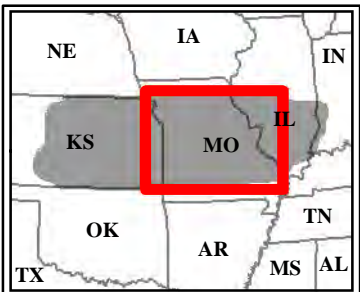
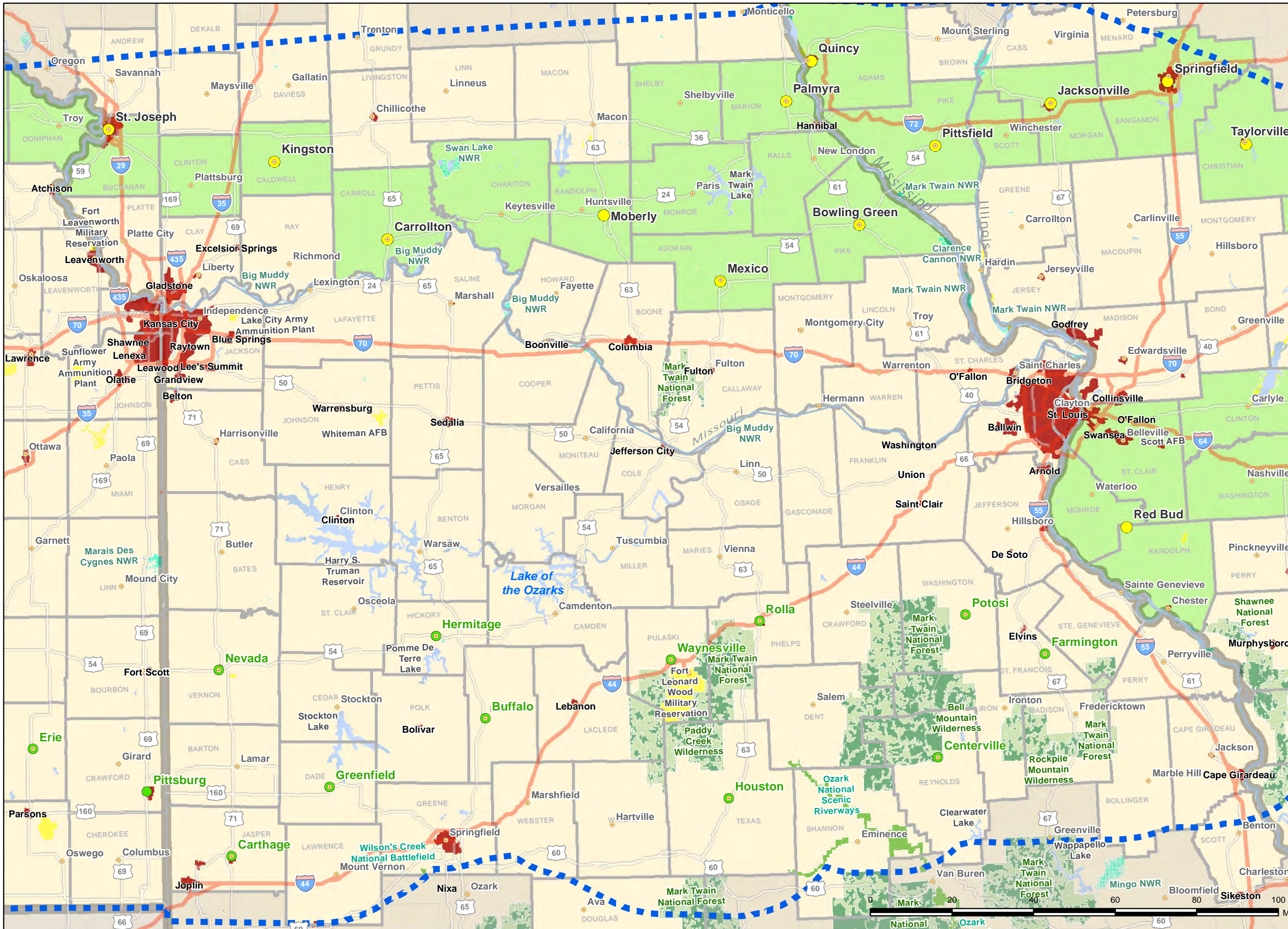
GRAIN BELT EXPRESS CLEAN LINE SCHEDULE



GRAIN BELT EXPRESS

CLEAN LINE

www.grainbeltexpresscleanline.com



Project Vicinity & Study Area within Missouri

- Legend**
- ▲ Substation
 - County Seat
- Roundtable Sites**
- Planned Roundtable
 - Completed Roundtable
- Study Area**
- ▬ Study Area
- Roundtable County**
- Roundtable County
- Interstate**
- ▬ Interstate
- US Highway**
- ▬ US Highway
- County Boundary**
- ▬ County Boundary
- Urban Area**
- Urban Area
- Federal Lands**
- Forest Service
 - Department of Defense
 - Fish and Wildlife Service
 - National Park Service
 - Bureau of Indian Affairs
 - Bureau of Reclamation



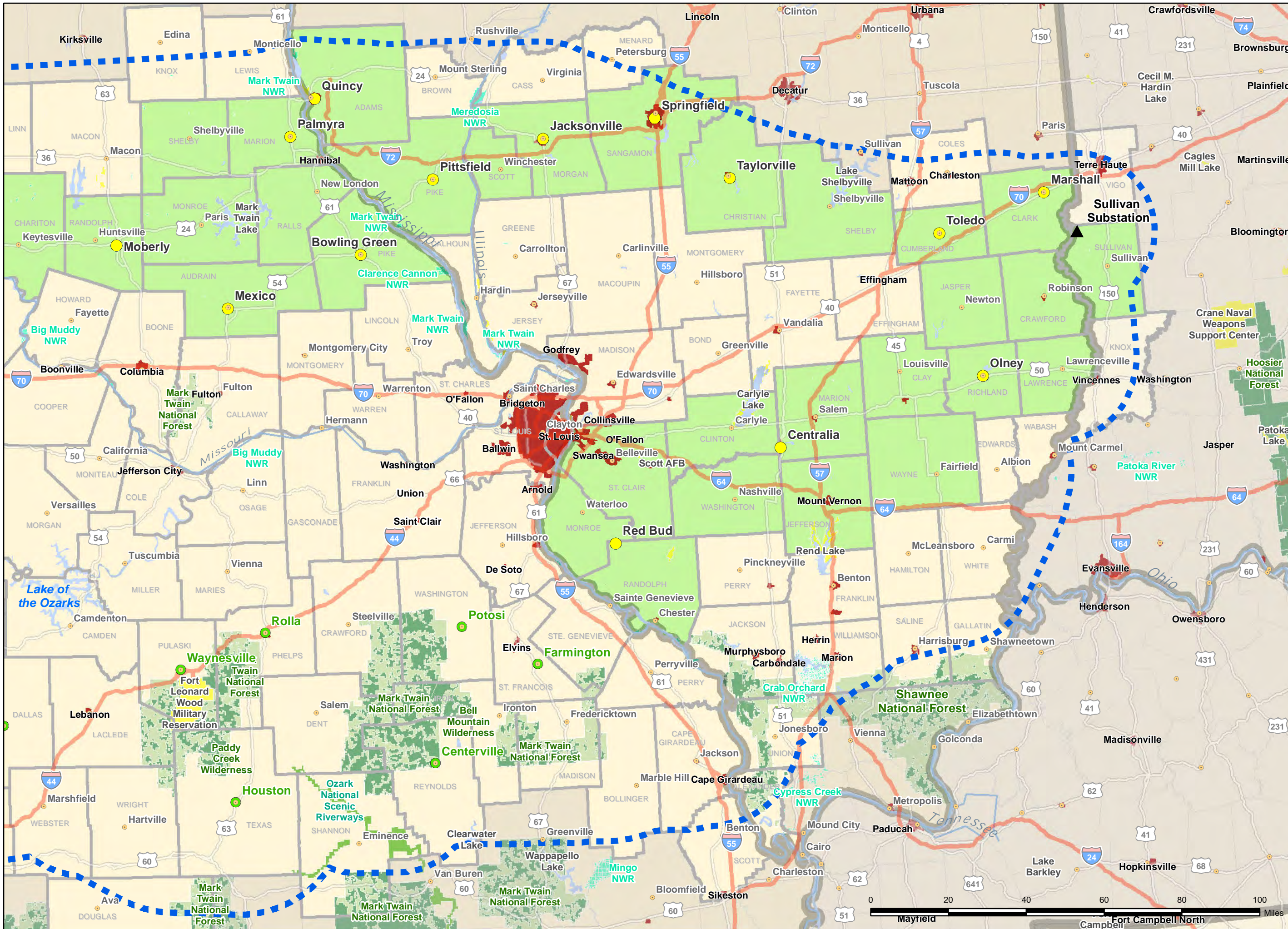
GRAIN BELT EXPRESS
CLEAN LINE

Geographic Coordinate System:
North America Equidistant Conic
Datum: North American Datum of 1983 (NAD83).
Projection: Equidistant Conic.
Linear Unit: Meter.



Source: MO Spatial Data Information Service; KS Data Access and Support Center; Illinois Natural Resources Geospatial Data Clearinghouse; ESRI





Project Vicinity & Study Area within Illinois

- Legend**
- ▲ Substation
 - County Seat
- Roundtable Sites**
- Planned Roundtable
 - Completed Roundtable
- Study Area**
- ▭ Study Area
- Roundtable County**
- ▭ Roundtable County
- Interstate**
- ▬ Interstate
- US Highway**
- ▬ US Highway
- County Boundary**
- ▭ County Boundary
- Urban Area**
- ▭ Urban Area
- Federal Lands**
- ▭ Forest Service
 - ▭ Department of Defense
 - ▭ Fish and Wildlife Service
 - ▭ National Park Service
 - ▭ Bureau of Indian Affairs
 - ▭ Bureau of Reclamation



GRAIN BELT EXPRESS
CLEAN LINE

Geographic Coordinate System:
North America Equidistant Conic
Datum: North American Datum of 1983 (NAD83).
Projection: Equidistant Conic.
Linear Unit: Meter.



Source: MO Spatial Data Information Service; KS Data Access and Support Center; Illinois Natural Resources Geospatial Data Clearinghouse; ESRI

