

Joint Committee on Corrections and Juvenile Justice Oversight

November 8, 2012

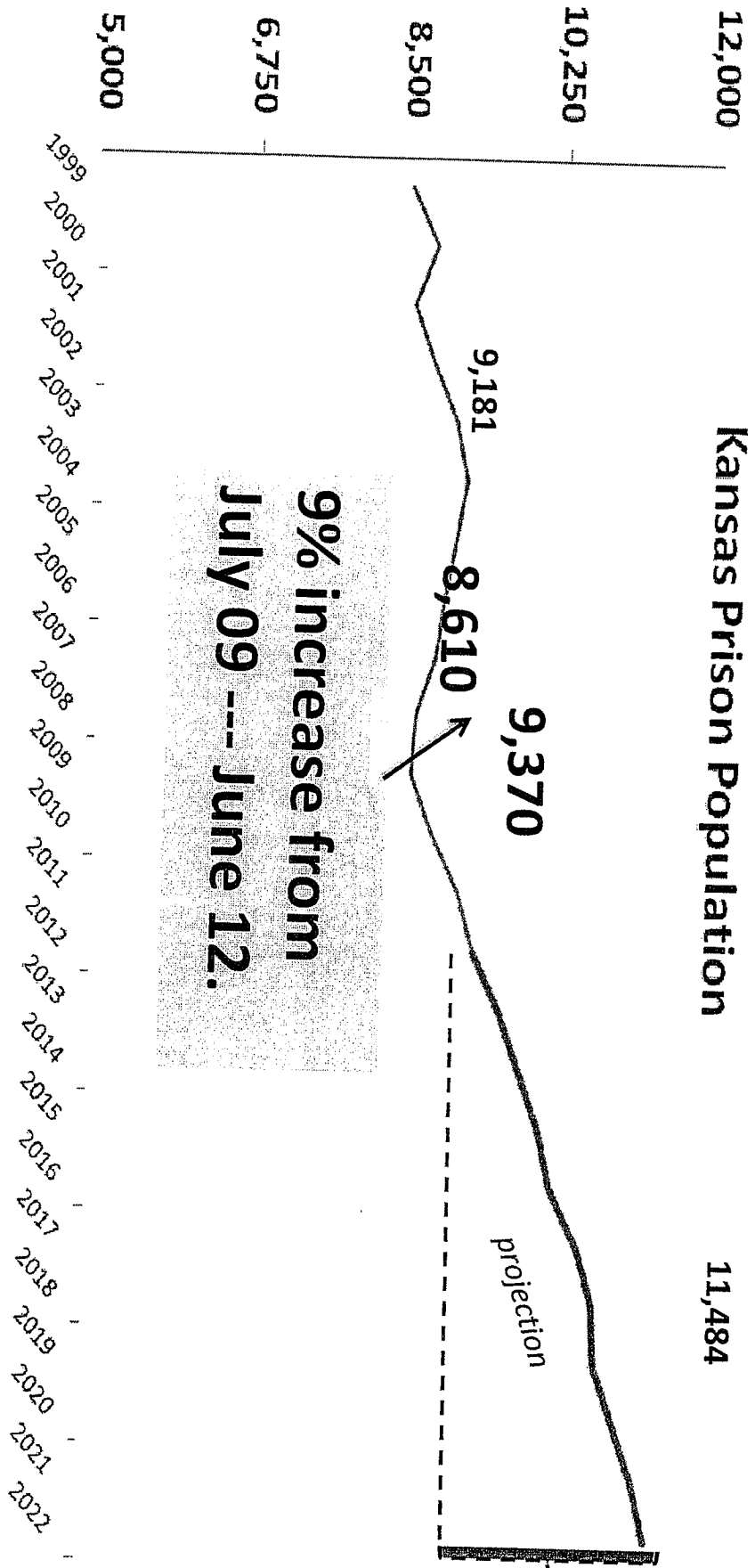
Secretary Ray Roberts

Kansas Department of Corrections

KDOC FOCUS

- **Protect public safety through reduced recidivism, offender success, and sound security practices**
- **Identify the driving cost of corrections and develop efficient management strategies**
- **Manage the rising prison population by developing expansion options and increasing the provision of evidence-based programs**
- **Promote collaborative relationships**

KDOC Prison Population to increase 23% over 10 years



Source: Kansas Sentencing Commission, 2013
 Prison Population Projection, Aug. 2012.

KDOC Prison Population

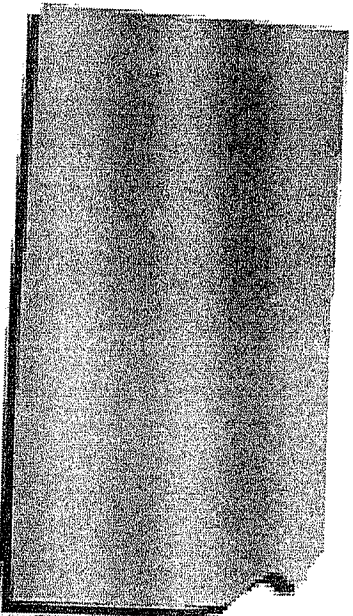
- On 11-1-12, the **prison population was 9,540** with a capacity of 9,332.
- **Male** population is 264 over capacity
- **Female** population is currently 739 and by the end of FY 14 will grow to 811
- Kansas has a higher % of incarcerated violent offenders, a lower percentage of property offenders, and a slightly higher number of drug offenders.
- **Projected 10 year population increase of 2114**

FY 2012 Releases

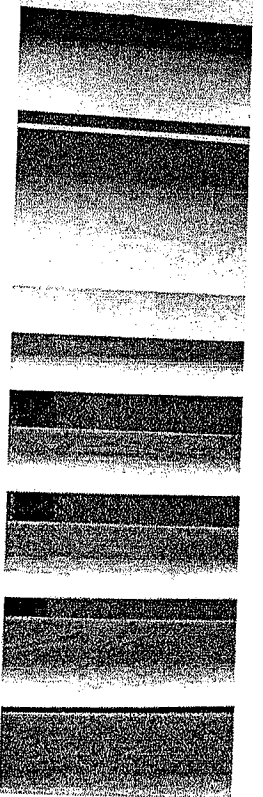
- **4,839 released**
- **Four counties accounted for 59.5% of all in-state releases: Sedgwick County 1,110; Johnson County 327; Shawnee County 319; Wyandotte County 309**
- **71% released to supervision**
- **49% released to supervision with non-violent convictions (property, drug, other non-person felonies)**

State Incarceration Rates

Rank		Rank		Rank	
1	Louisiana	18	Colorado	35	New Mexico
	867		445		323
2	Mississippi	19	Delaware		
	686		443		
3	Oklahoma	20	California	36	Kansas
	654		439		317
4	Alabama	21	Indiana	37	Iowa
	648		434		309
5	Texas	22	Tennessee	38	Hawaii
	648		432		302
6	Arizona	23	South Dakota	39	New York
	572		416		288
7	Florida	24	Pennsylvania	40	New Jersey
	556		403		286
8	Arkansas	25	Maryland	41	Washington
	552		387		269
9	Missouri	26	Wyoming	42	Vermont
	508		385		265
10	South Carolina	27	Montana	43	Nebraska
	495		378		247
11	Georgia	28	Connecticut	44	Utah
	479		376		238
12	Idaho	29	Illinois	45	North Dakota
	474		373		226
13	Nevada	30	North Carolina	46	New Hampshire
	472		373		209
14	Virginia	31	Wisconsin	47	Massachusetts
	468		366		200
15	Kentucky	32	West Virginia	48	Rhode Island
	458		363		197
16	Ohio	33	Oregon	49	Minnesota
	448		361		185
17	Michigan	34	Alaska	50	Maine
	445		340		148
					6



HB 2684 created a
**Justice Reinvestment
Working Group** to study
criminal justice policies
and recommend
legislative changes to
increase public safety,
reduce recidivism and
curb spending.



Results First

Helping states assess the costs and benefits of policy options and use that data to make decisions based on results

The choices states make today about how to invest their limited resources will dramatically shape our nation's future.

Results for your state

Results First is working with states to implement cutting-edge cost-benefit analysis tools to help identify options that provide the best outcomes for citizens while improving states' fiscal health. These partnership efforts include:

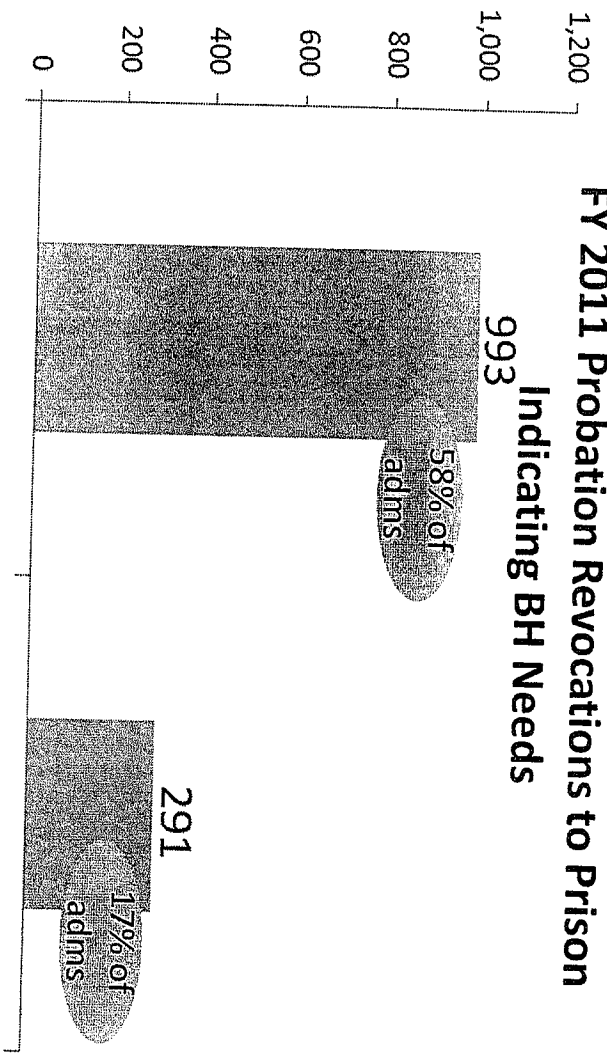
- Providing intensive assistance to states to help them adopt and apply the Washington State Institute for Public Policy cost-benefit analysis model to their own policies and programs.
- Creating opportunities for states participating in Results First to share information and lessons learned.
- Releasing a 50-state review of current efforts to make policy decisions based on comparisons of costs and benefits.

Understanding Key Problems

- **75%** of all inmates are moderate or high risk in education and employment
- **66%** abuse drugs and alcohol
- **33%** have a dependence/abuse diagnosis
- **66%** of revocations on parole are largely driven by drug or alcohol abuse.
- **38%** of the population is mentally ill

Most Probationers Revoked to Prison Have Behavioral Health Needs

FY 2011 Probation Revocations to Prison Indicating BH Needs



Of FY 2011 Probation Revocations

- ✓ 58% had SA score of 4 or higher
- ✓ 17% had MH score of 3 or higher
- ✓ 12% had both

For comparison, only 16% of the successfully terminated CC probationers had an SA score of 4 or higher.

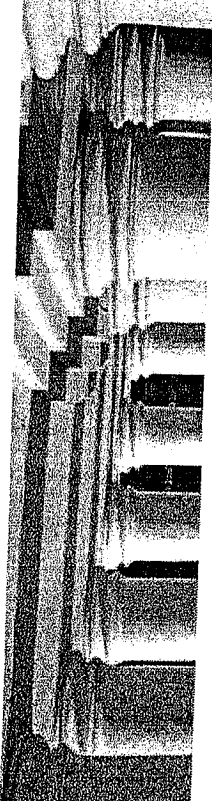
SA Score 4+

- SA Scores range from 0 to 9 and are based on nine questions within the substance abuse domain within the LSI-R risk assessment.
- (A score of 4 means that four of the nine questions were answered in the affirmative.)

MH Score 3+

- MH Scores range from 1 to 7 and are based on a continuum of MH programming intensity.
 - Not currently requiring MH
 - Receives time-limited mental health services
 - Receives on-going mental health services that may include medication management
 - Receives special needs treatment monitoring
 - Placed in mental health structured reintegration program at LCF-TRU
 - Placed in intensive mental health placement at LCMHF or TCF-MHU
 - Hospitalization at LSSH

Sources: Kansas Dept. of Corrections, Prison Admissions and Inmate Assessment Case Data.



September
 2012

States Report Reductions in Recidivism

In many jurisdictions, state and local government officials have intensified their efforts to reduce recidivism. As policymakers are under tremendous pressure to cut spending wherever possible, Republican and Democratic elected officials alike have made the case that improved efforts to reduce reoffense rates among people released from prison would save money and increase public safety. Their position is backed by an extensive and compelling body of research that demonstrates the impact that policies, practices, and programs can have in reducing the likelihood that someone released from prison or jail will reoffend.

Reductions in Statewide Recidivism Rates for 2005 and 2007 Prison Releases

This brief highlights significant statewide recidivism reductions achieved in Kansas, Michigan, Mississippi, Ohio, Oregon, Texas, and Vermont. For each state, this brief compares three-year post-release recidivism rates for two cohorts: people exiting prison in 2005 and those released in 2007. This data is among the most current available for statewide three-year recidivism rates.

State	% Change In Recidivism Rate for 2005 & 2007 Releases	# Fewer Returned to Prison: 2007 Release Group
Kansas	-15%	289
Michigan	-18%	862
Mississippi	-9%	235
Ohio	-11%	1,278
Oregon	-8%	138
Texas	-11%	1,212
Vermont	-6%	141

Recidivism Rates (2008 Releases)

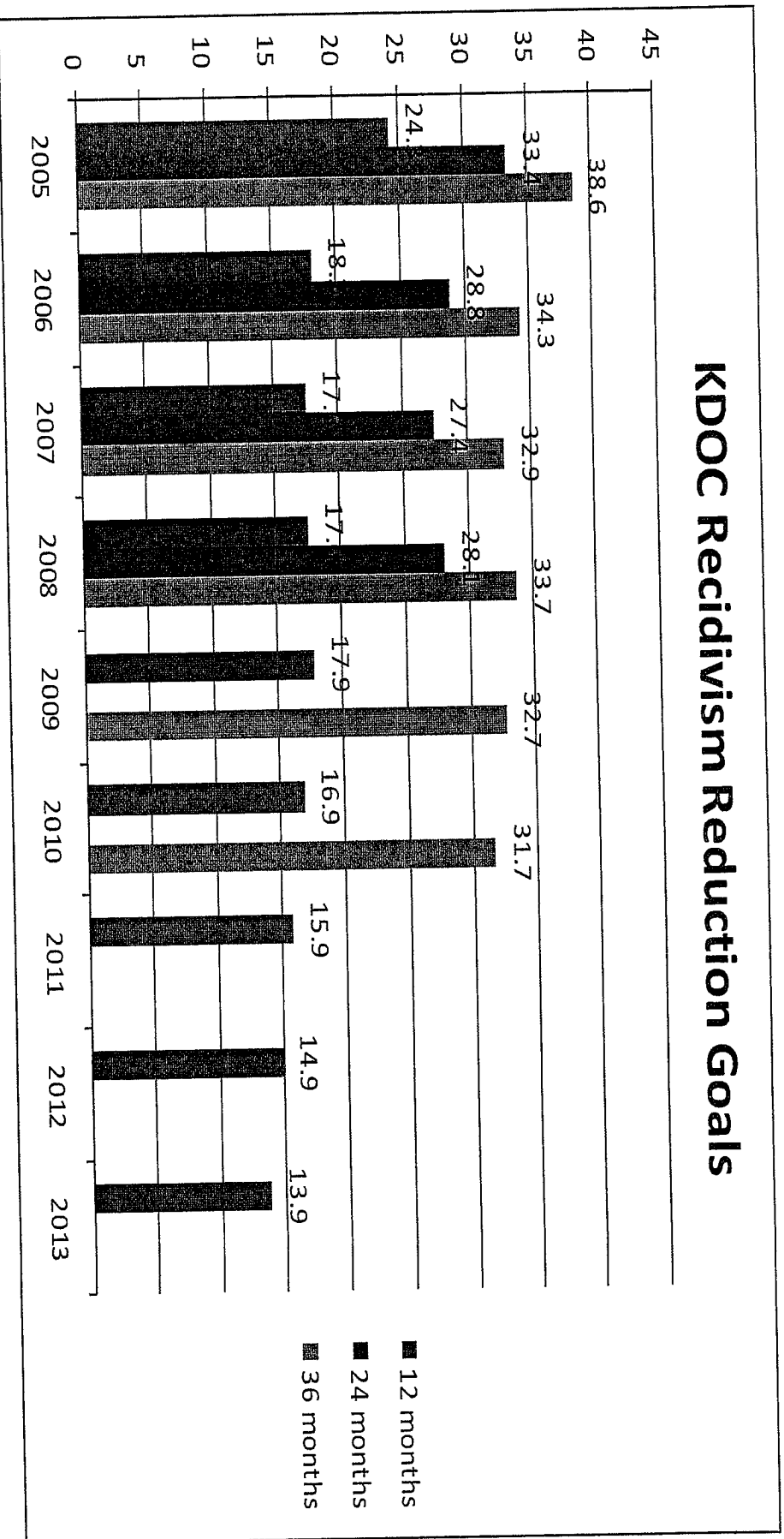
- Sex offenders – **41.8%** overall – **38.4%** for conditional violations & **3.5%** for new offenses
 - Males – **31.1%** vs. Females – **20.3%**
 - **High risk offenders - 39%**
 - **Moderate risk offenders – 28.4%**
 - **Low risk offenders – 15.8%**
 - Mental health level (4-7) offenders – **35.8%**
- Recidivism rates are calculated based on returns to prison after 36 months for both conditional violations and new offenses.**

***Second Chance Act Adult Offender Comprehensive
Statewide Recidivism Reduction Program DOJ Grant
awarded to Kansas and 6 other states 10-1-12***

- Provides services for **80** mentally offenders in prisons & **50** high-or-moderate-risk offenders in community.
- **Supports KDOC's recidivism-reduction plan, providing:**
 - ❖ **Fidelity audits** of all skills-building classes/groups (cognitive, job readiness, parenting, substance abuse, sex offender)
 - ❖ **Cognitive services for SPMI offenders** in three prisons (recent research shows 2/3 rds. of MIOs are high risk on anti-social thinking)
 - ❖ **Demonstration project in Saline County** with parole/community corrections working together to target high risk/need offenders (employment, substance abuse, case management, with MH partners)
 - ❖ Support for the **Kansas Reentry Policy Council**
 - ❖ **Mentoring coordinators** with **3-4** Lead Organization
 - ❖ **Evaluation** of recidivism-reduction programs

Kansas seeks to reduce recidivism after 36 months by 1% per year, for offenders released in 2009 and 2010; and after 12 months for offenders released in 2011, 2012, and 2013.

KDOC Recidivism Reduction Goals



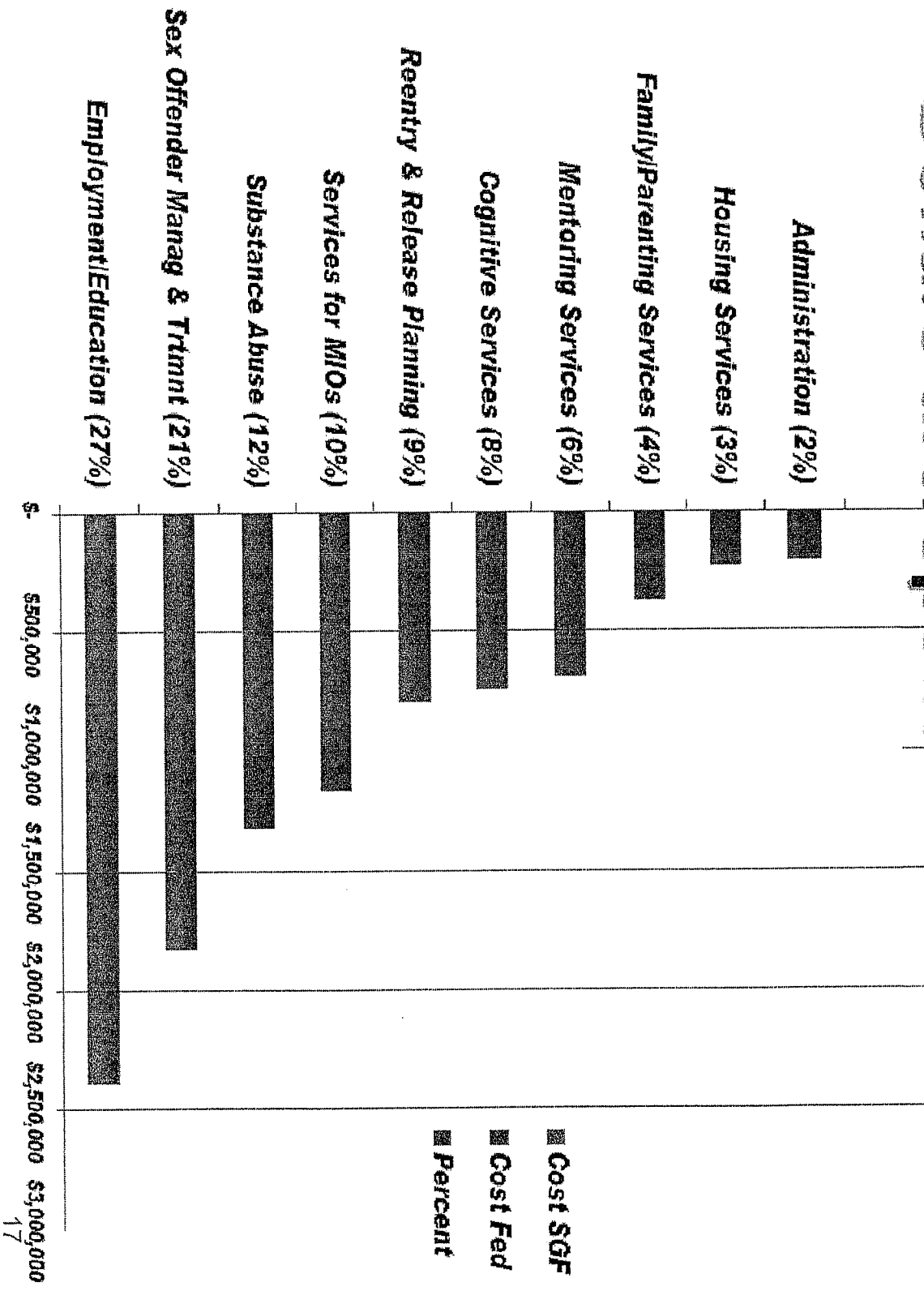
Increase in offenders we anticipate serving in FY 2013 (compared to FY 2012) with skills-building recidivism-reduction services

Program	# served in FY 2012	# we anticipate will be served in FY 2013 (NOTE: These are units of service; one inmate/one program; appx. one-third will receive at least two units of service)
Cognitive (Thinking for a Change)	942	1250
Job Readiness (OWDS)	991	1250
Parenting	432	500
Education (GED, Spec Education)	470	700
Vocational Training (includes NCCER Basic, Manufacturing Skills Certification & Kansas WorkReady Certification)	483	700
Chemical Dependency Recovery Program (CDRP) - LCMHF	118	120
Substance Abuse Recovery Program (SARP) - TCF	57	60
Substance Abuse Program (SAP) - EDCF, HCF, LCF & WWRF	0	315
Sex Offender Treatment (SOTP) - LCF, HCF, TCF	48	236
Pre-Release - WCF	233	240
TOTAL	3774	5371

HOW PROGRAM (RECIDIVISM-REDUCTION) DOLLARS ARE SPENT

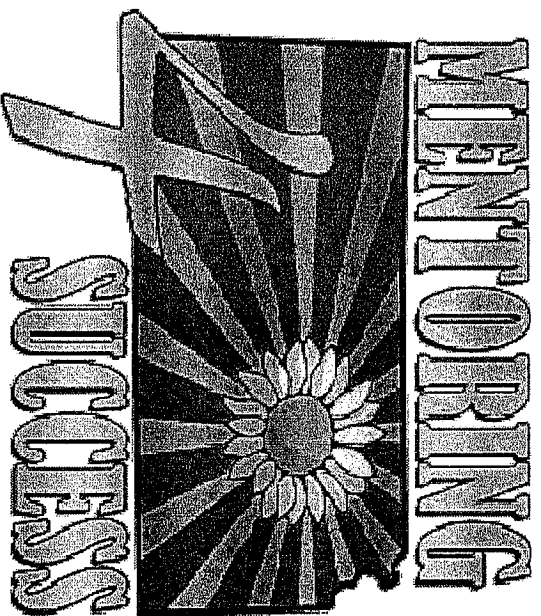
Service	Cost State General Fund	Cost Fed Grants	Cost Total	Percent
Employment/Education (27%)	\$2,389,793	-	\$ 2,389,793	25%
Sex Offender Management & Treatment (21%)	\$1,828,534	-	\$ 1,828,534	19%
Substance Abuse (12%)	\$1,015,150	\$ 299,172	\$ 1,314,322	14%
Services for MIOs (10%)	\$ 901,481	\$ 262,800	\$ 1,164,281	12%
Reentry & Release Planning (9%)	\$ 795,430	-	\$ 795,430	9%
Cognitive Services (8%)	\$ 741,261	-	\$ 741,261	8%
Mentoring Services (6%)	\$ 533,043	\$ 160,000	\$ 693,043	7%
Family/Parenting Services (4%)	\$ 372,132	-	\$ 372,132	4%
Housing Services (3%)	\$ 228,848	-	\$ 228,848	2%
Administration (2%)	\$ 206,073	-	\$ 206,073	2%
TOTAL	\$9,011,745	\$ 721,972	\$ 9,733,717	

How Program (Recidivism-Reduction) Dollars are Spent - Chart



Second Chance Act Family-Based Adult Offender Substance Abuse Treatment Program – 20 female offenders & their families served per year DOJ Grant 10-1-12

- This 2-year grant provides funds for intense case management, peer mentoring, substance abuse treatment, parenting and other services for female offenders and their minor children pre-and-post-release.
- **100%** of their children will have case plans
- **20** families will be placed at Ashby House in Salina for 6 months post-release to assist transition



- **936** mentors matched with offenders leaving prison since July 2011
- Mentors provide a pro-social model and accountability
- **47%** of mentors have helped offenders get jobs and **45%** have helped obtain housing

Prison Rape Elimination Act

- **Developed to eliminate sexual abuse in confinement**
- **Became effective 8-20-12**
- **Provides for external audits beginning 8-20-13, requiring 1/3 of KDOC Facilities be compliant each year**
- **Cost – estimated \$55,000 per facility**