

Joint Committee on Energy and Environmental Policy

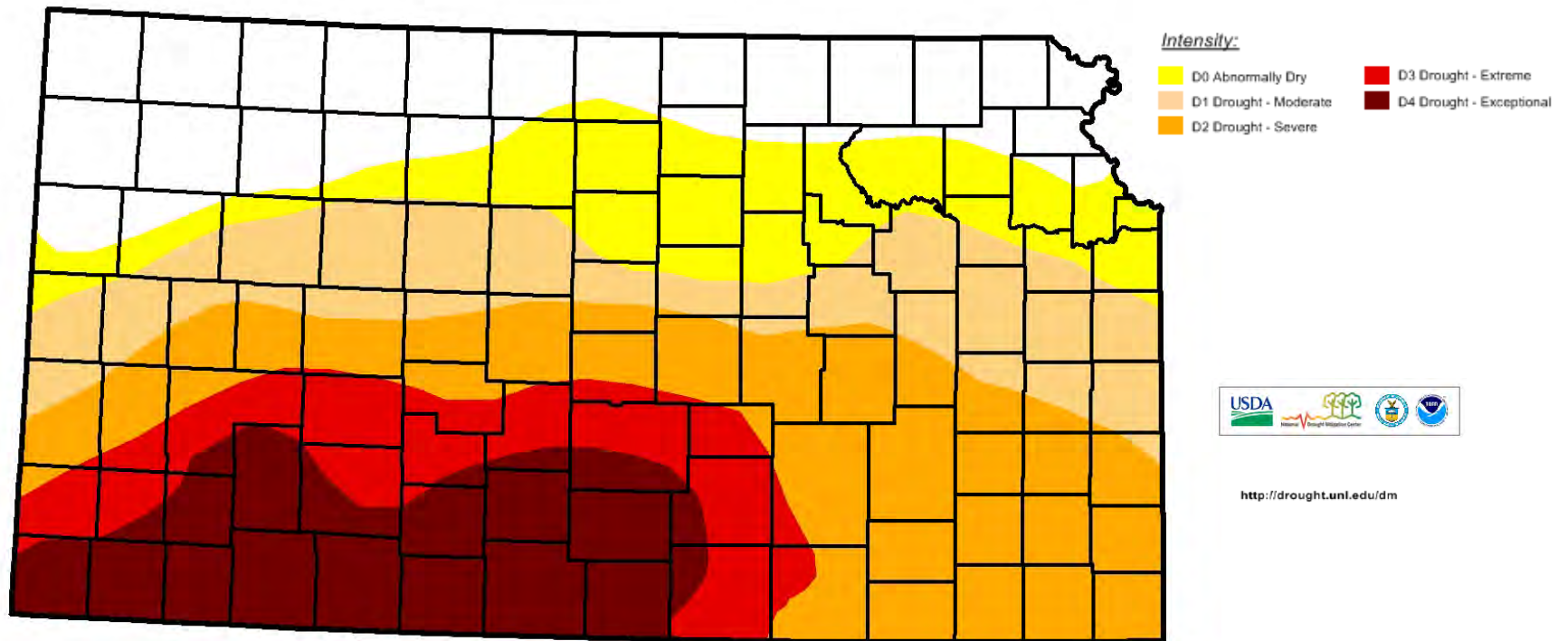
Earl Lewis,
Kansas Water Office
October 18, 2011

Drought Update



Drought Monitor

▶ October 11, 2011



Algae blooms

- ▶ Currently, 3 Kansas lakes under advisory and 7 under warning
- ▶ KDHE received reports of 22 cases of human illness due to contact with blooms in 2011, 16 of which are being tracked
- ▶ Economic impact to recreation and water treatment

DANGER

LAKE CLOSED
due to harmful algae

**KEEP OUT
OF LAKE**

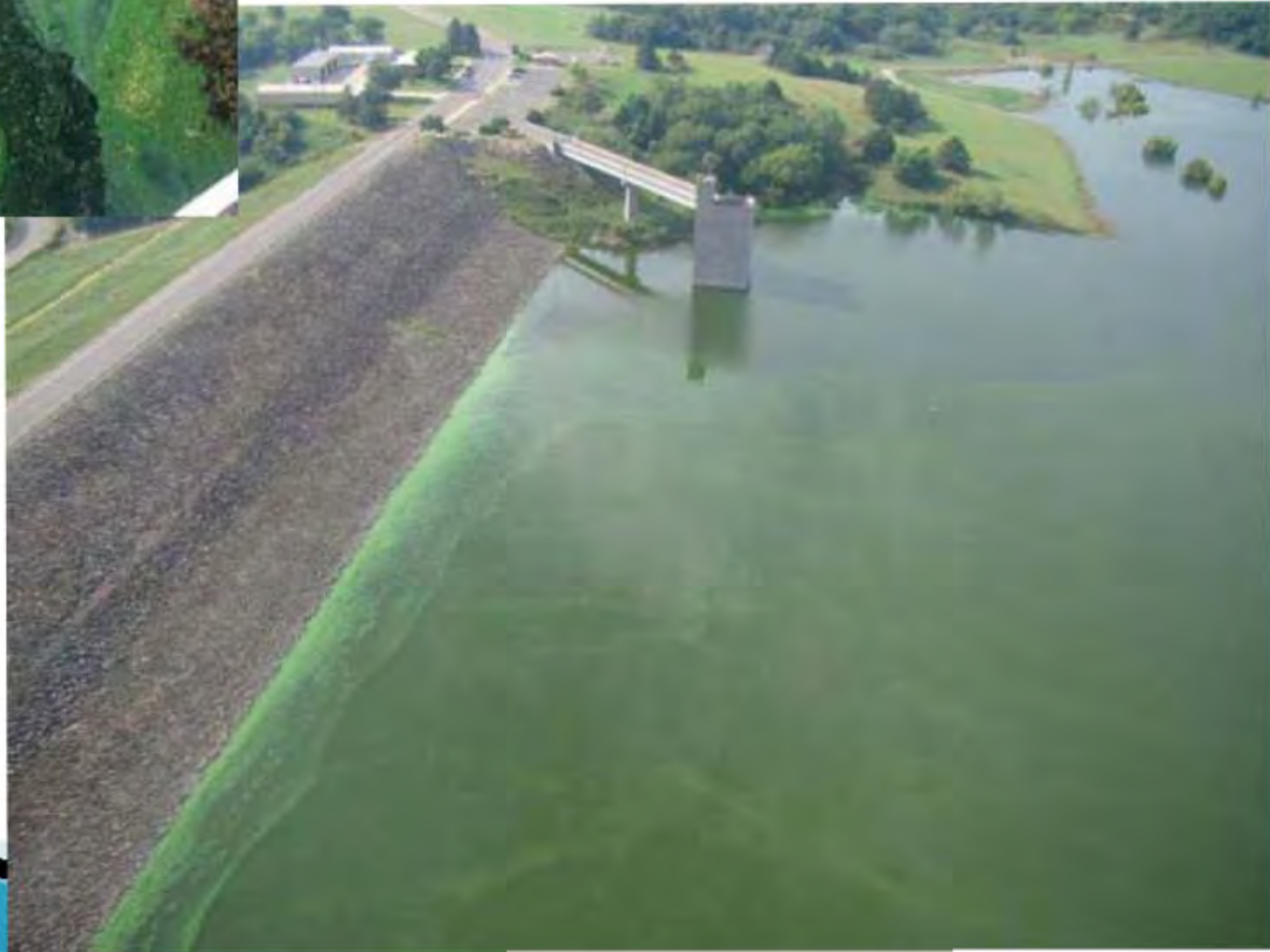
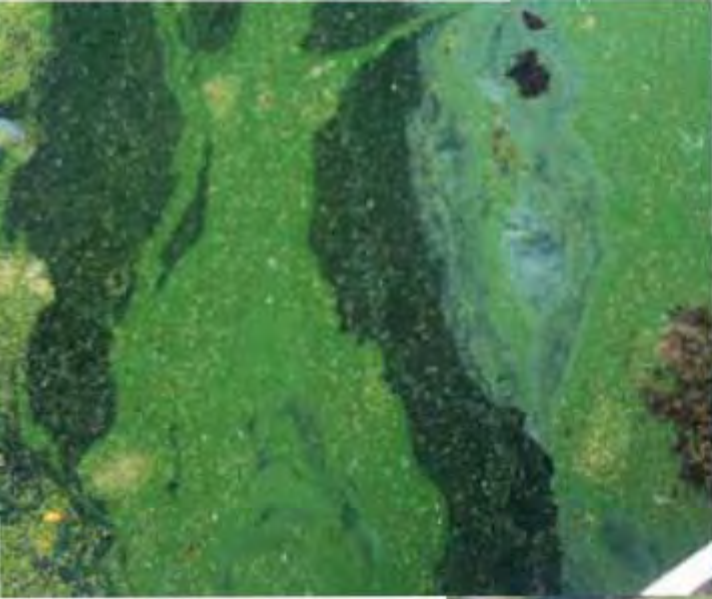
In case of contact with harmful algae, call your doctor or veterinarian if you or your animals experience nausea, vomiting, diarrhea, skin rash, eye irritation, respiratory symptoms, or other unexplained illness.

Report new algae blooms to KDHE: 866-865-3233	Call your local health department:
---	------------------------------------

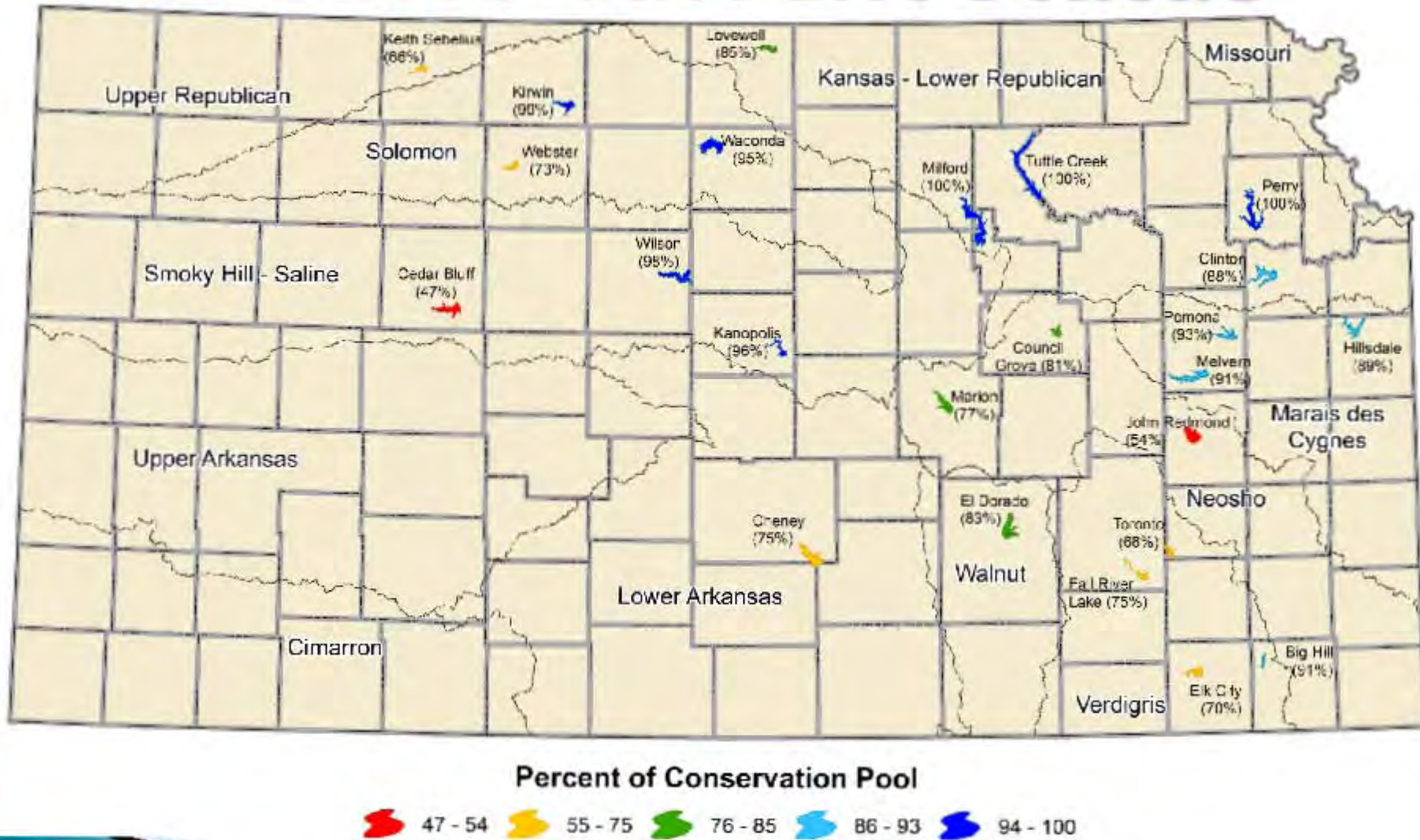
For more information:

www.kdheks.gov/algae-illness/download/BGA_recreation_fact_sheet.pdf

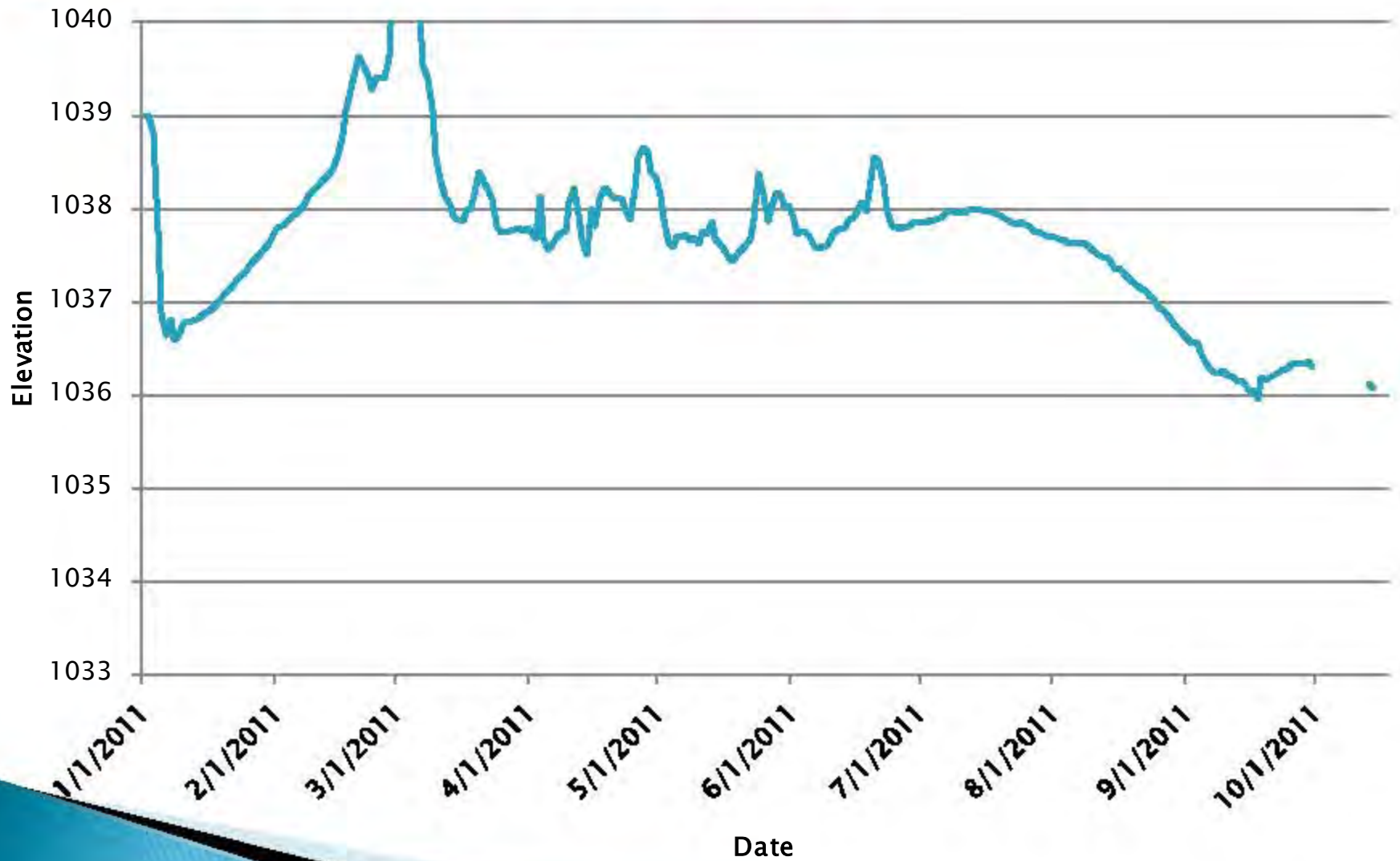
Algae blooms



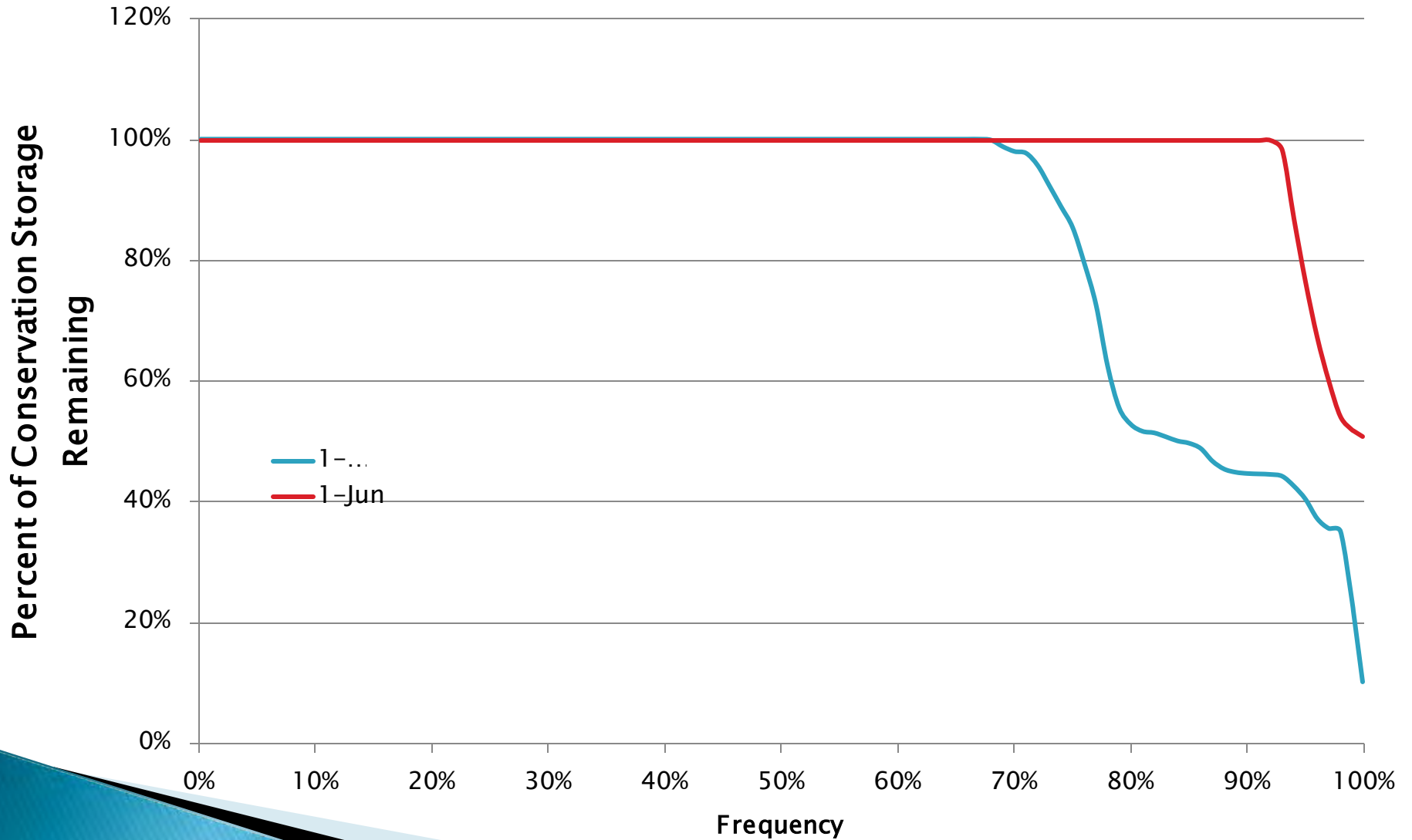
PWS lakes current status



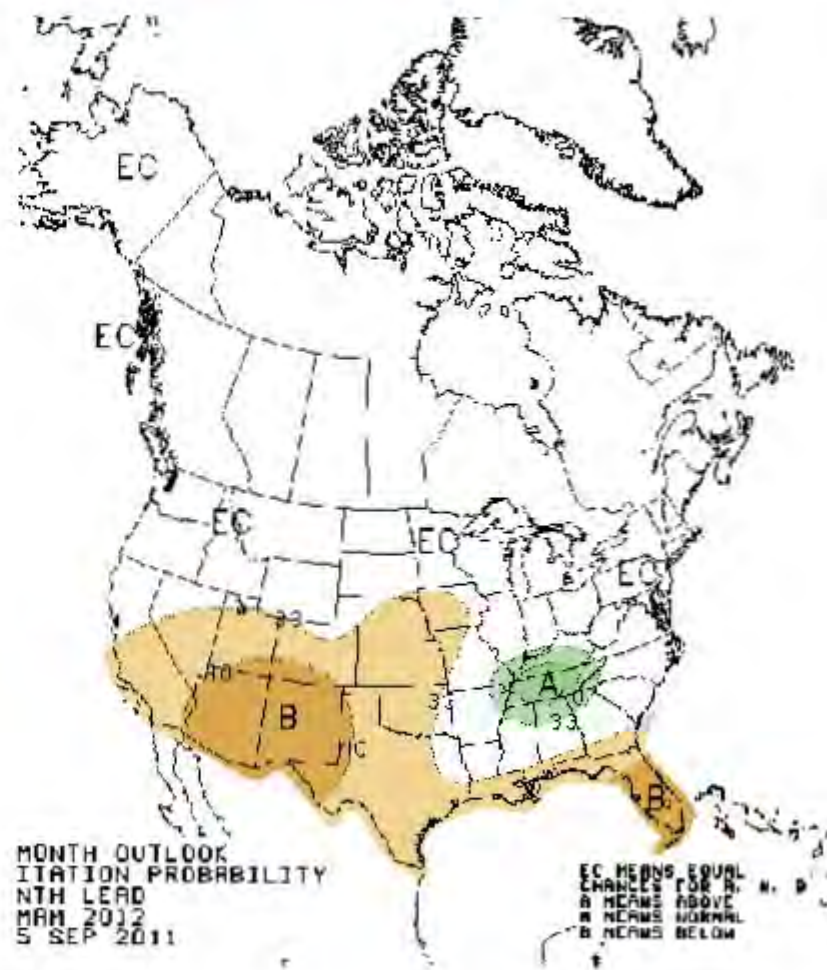
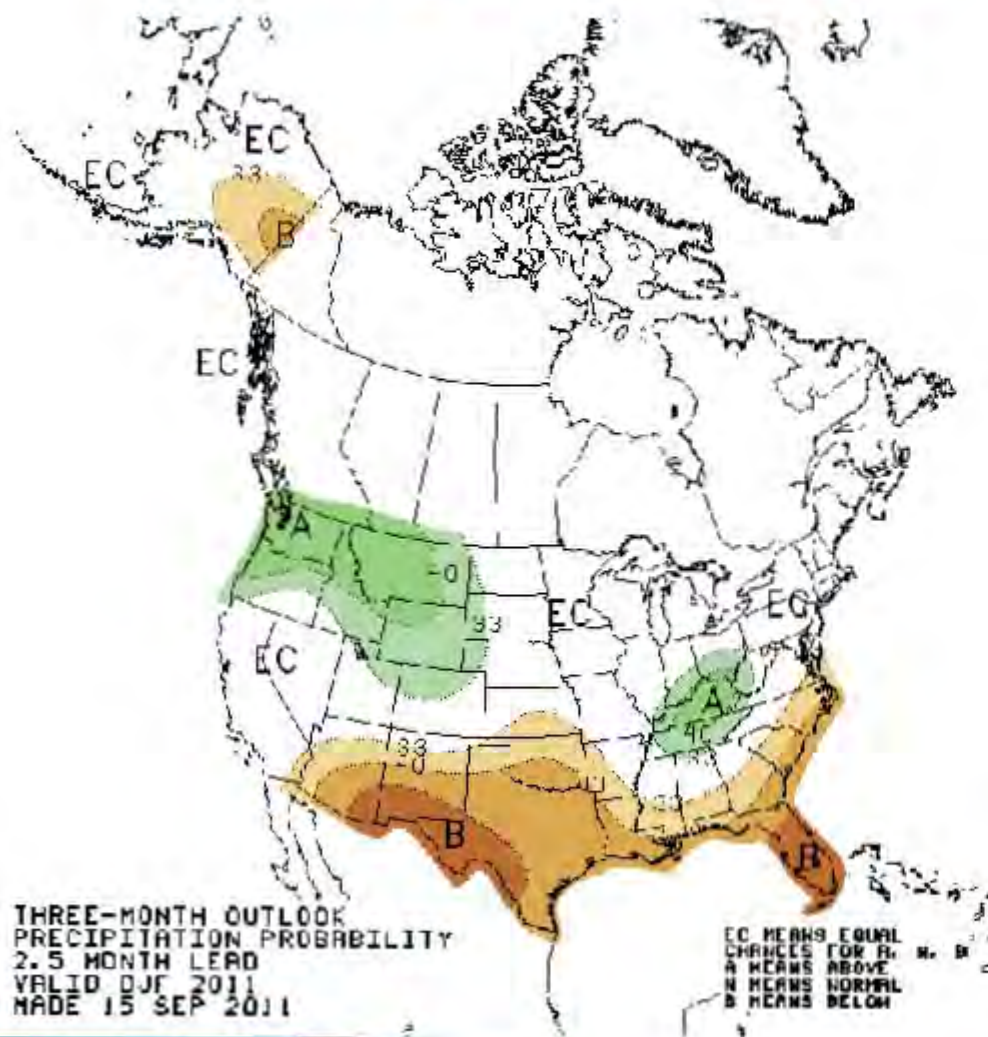
John Redmond



Potential for Refill?



Long range Outlook

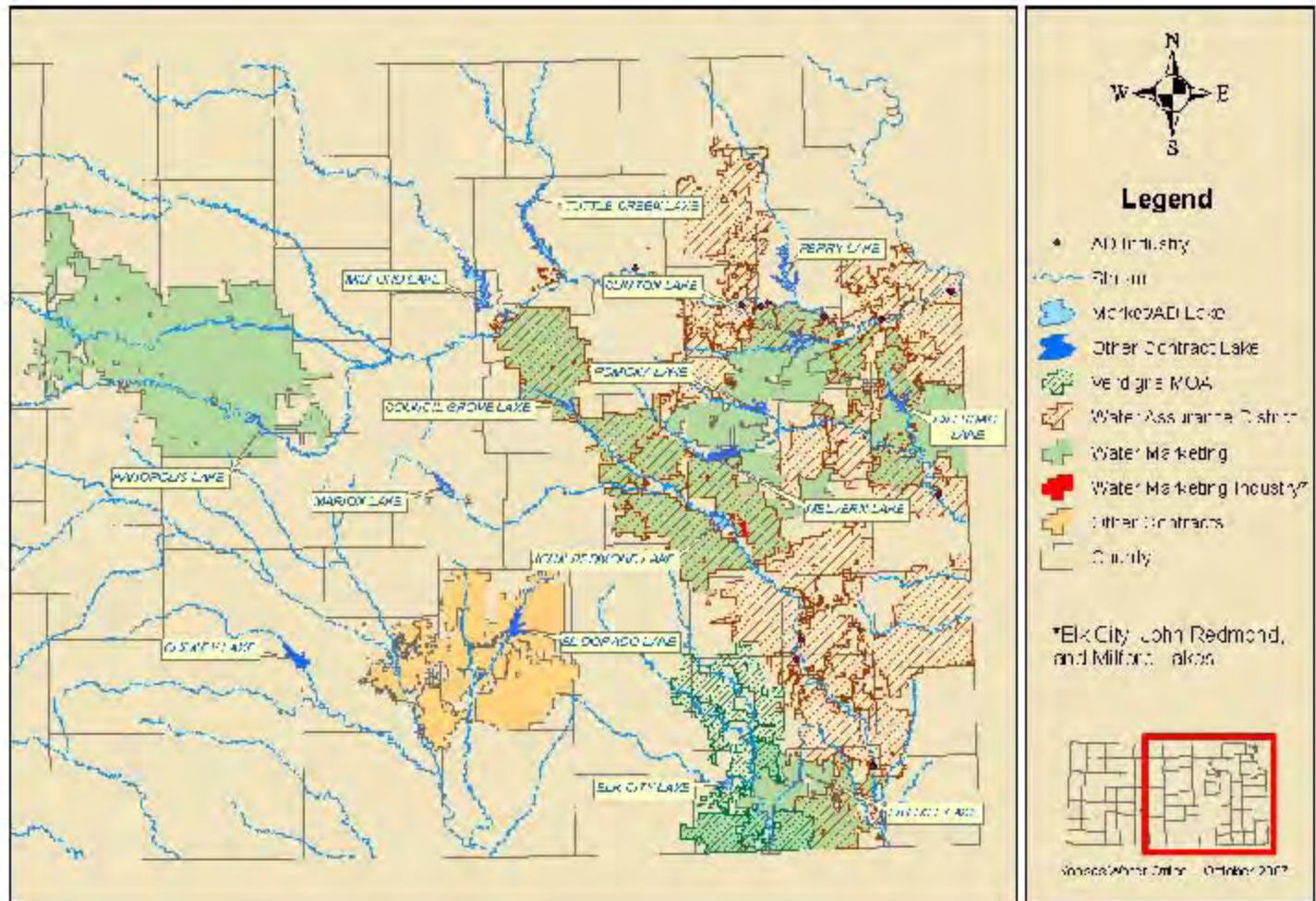


Unfunded Liability



State owned lakes

Federal Lake Water Supply Storage Customers



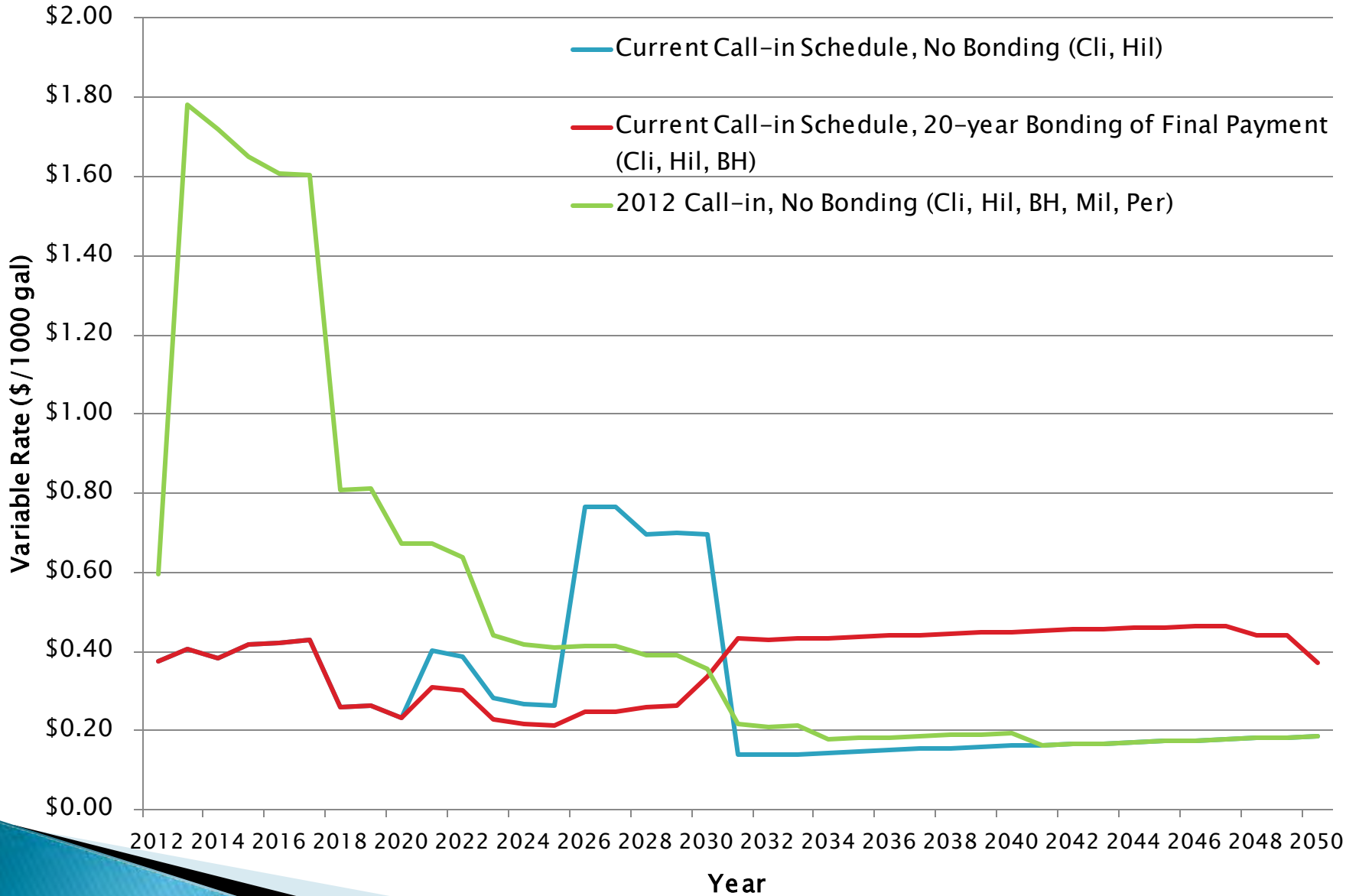
Sources of funding by lake

Reservoir – all values in Af	Marketing	Assurance	Reserve Capacity	Future Use	Total
Big Hill	9,504			17,039	26,543
Clinton	57,295			38,158	95,453
Council Grove	18,678	6,365	8,214		33,257
Elk City	21,070		10,442		31,512
Hillsdale	15,032			45,111	60,143
John Redmond	32,136	3,313			35,449
Kanopolis	21,973				21,973
Marion	36,865	346	14,433		51,644
Melvern	14,949	10,827	26,289		52,065
Milford	53,429	62,980		227,183	343,592
Perry		32,358		161,751	194,109
Pomona	831	12,921	26,635		40,387
Tuttle Creek		79,328	16,596		95,924
Total	281,762	208,438	102,609	489,242	1,082,051

Unfunded liability

	Balance 2011	Annual P&I 2011	Add. O&M 2011	Contract Exp. Year	Balance at Term
Perry	\$ 16,741,424	\$ 833,823	\$ 361,329	2040	\$ 36,951,533
Milford	\$ 16,949,180	\$ 802,977	\$ 189,077	2040	\$ 29,966,434
Big Hill	\$ 9,617,916	\$ 704,766	\$ 155,085	2029	\$ 21,122,724
SUBTOTAL	\$ 43,308,520	\$2,341,567	\$ 705,492		\$ 88,040,691
Clinton	\$ 5,898,913	\$ 450,564	\$ 105,531	2027	\$ 10,960,979
Hillsdale	\$ 37,089,963	\$2,626,663	\$ 219,455	2030	\$ 81,456,424
TOTAL	\$ 86,297,396	\$5,418,794	\$1,030,477		\$ 180,458,094

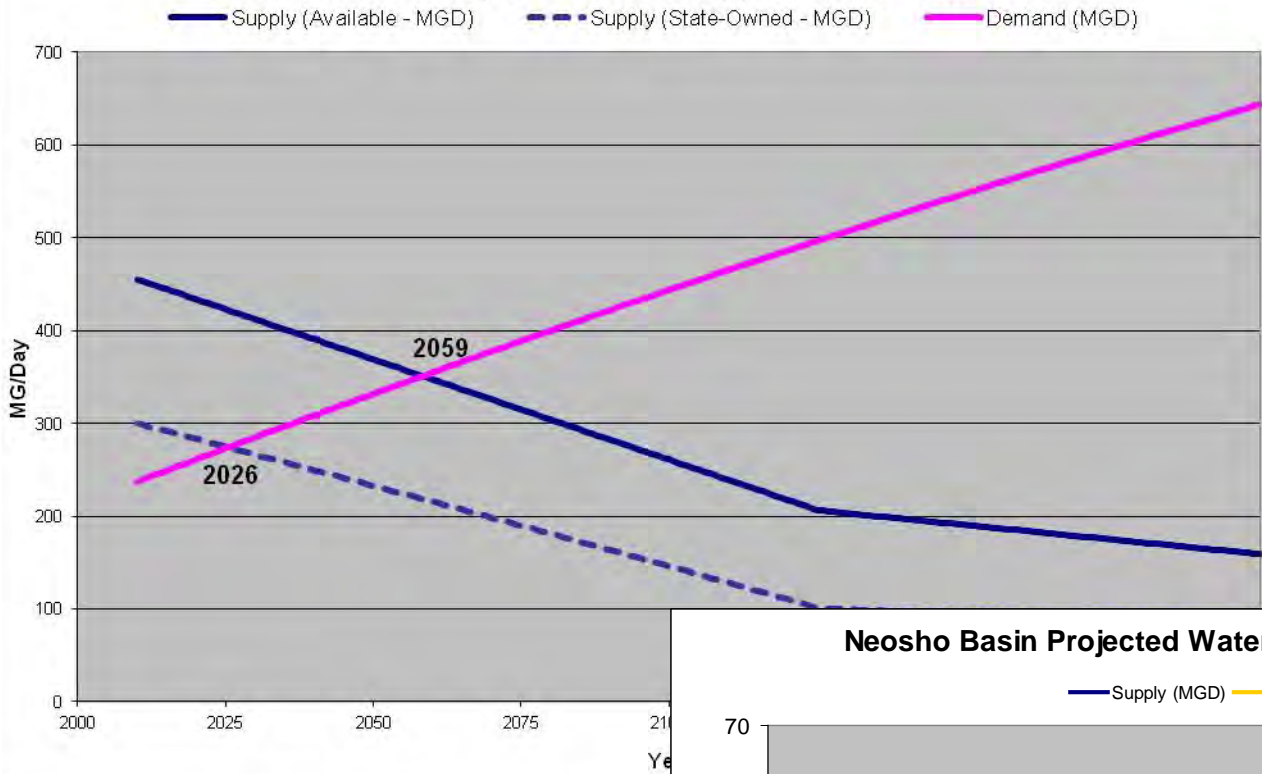
Water Marketing Program Variable Rate



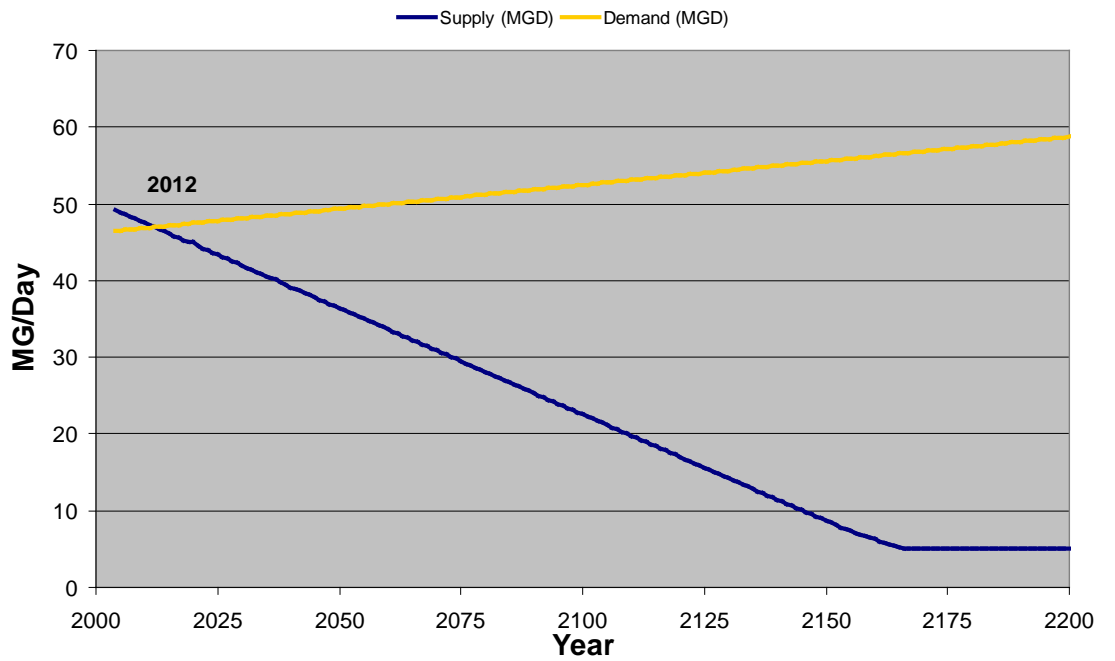
Sediment




Kansas Basin Projected Water Supply Storage and Demand



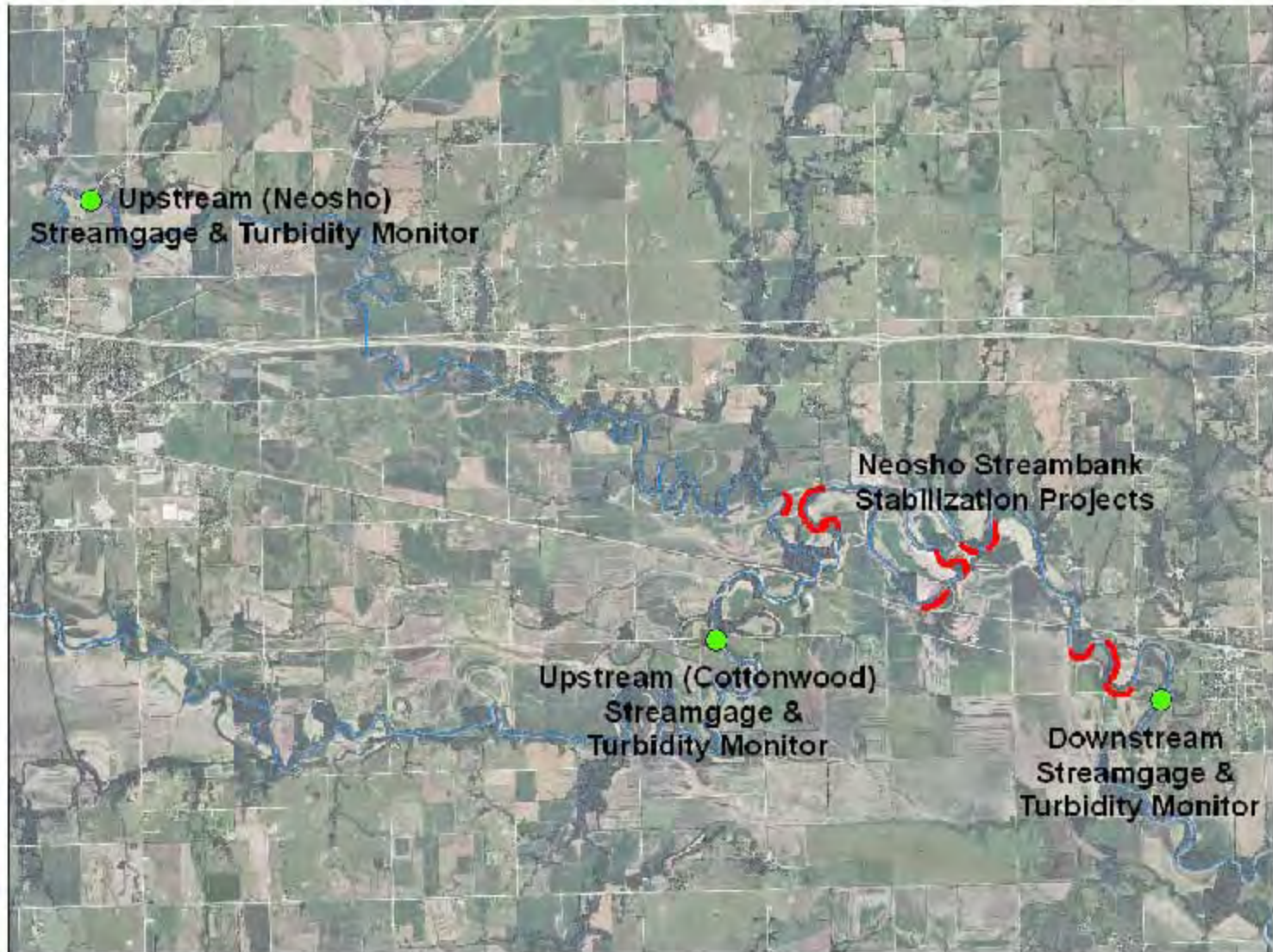
Neosho Basin Projected Water Supply Storage and Demand



Reallocation of John Redmond

- ▶ Hartford Levee repairs conducted in Fall 2011
 - ▶ Completion of Reallocation report in Spring 2012
 - ▶ Reclassification request of Hartford Levee in Summer 2012
 - ▶ Reallocation implemented in Fall 2012
 - ▶ Expand water supply reliability from John Redmond another 25–30 years
- 

Stream bank stabilization



Before and after photos



Before

Before and after photos



After

Before and after photos



Before

Before and after photos



After

Before and after photos



Before

Before and after photos



After

Nutrient / Sediment Proposal

- ▶ KWA Request \$6M for development of new KDA–DOC program to address sediment and nutrients
- ▶ Links to WRAPS watershed plans and TMDLs
- ▶ “On Demand” funding mechanism prioritized to highest reduction for dollars spent
- ▶ High economic return for investment



ELARF proposal

- ▶ KWA recommends 10% of expanded gaming revenue for water related projects
- ▶ FY2013 estimate of \$8.5 million
- ▶ Targeted towards projects in the following categories:
 - Conserving & Extending the Useful Life of Aquifers
 - Reservoir Restoration & Protection
 - Improving & Protecting Waters
 - Improved Monitoring & Data Collection

Thank You

Earl Lewis
Kansas Water Office
October 18, 2011