



Department of Social and
Rehabilitation Services

Senate Ways and Means Committee
February 15, 2012

SRS Update on State Reorganization

Presented by:

Phyllis Gilmore, Acting Secretary
Kansas Department of Social and Rehabilitation Services

For additional information, contact:
Michelle Schroeder, Director of Legislative and Constituent Services & Public Policy
Docking State Office Building, 6th Floor North
(785) 296-3271

Senate Ways and Means
Date: 02-15-2012
Attachment: 7

Testimony of:

Phyllis Gilmore, Acting Secretary
Kansas Department of Social and Rehabilitation Services
Topeka, Kansas

presented to:

The Hon. Carolyn McGinn, Honorable Members
of the Senate Ways and Means Committee

SRS update on state reorganization plan for the Senate Ways and Means Committee

Chair McGinn, Vice-Chair Vratil, Ranking Member Kelly, Honorable members of the Committee:

Madam Chair, thank you for the opportunity to testify before you today regarding SRS' role in the implementation of Governor Brownback's reorganization plan.

I am greatly looking forward to the departmental changes outlined in Governor Brownback's Executive Reorganization Order (ERO) because this reconfiguration of state agencies will allow SRS to strengthen and consolidate its children and family services efforts.

This is a unique opportunity to put our principles into practice. We will be able to better coordinate the policies that help children and other vulnerable Kansans, to work to strengthen Kansas families and to encourage economic self-sufficiency.

In short, this ERO will sharpen SRS' focus on its core responsibilities. Our new agency will be called the Kansas Department for Children and Families.

The new configuration will give Kansas an agency that targets one of the principal goals set out in the Governor's Road Map for Kansas: addressing the causes of poverty and improving the lives of the children who live here.

In addition, the realignment outlined in the ERO will consolidated all Medicaid and other medical-services program management under the new Department of Aging and Human Services.

The current arrangement has resulted in fragmentation and duplication of effort. Ending the division of the programs between two different departments will allow for more coordinated management and oversight.

Common sense: It just makes good sense for all Medicaid programs to be under one roof. It also makes sense for Medicaid fiscal and contract management to be consolidated under one roof under a reconfigured Kansas Department of Health and Environment, Division of Health Care Finance.

This new, more efficient structure will allow us to better provide quality, timely Medicaid services to Kansas' most vulnerable citizens.

The ERO is directed at improving services for consumers of both social services and medical care.

It will aid the State of Kansas, our social workers and our health care providers in creating better ways to deliver services to those who are relying on us.

SRS is working to achieve the goal of reorganizing the health-care programs into a single state agency.

The plan is to merge SRS' Disability and Behavioral Health Services (DBHS) division with Kansas Department on Aging programs to create a new agency: the Department for Aging and Disability Services. The SRS/DBHS programs involved in the reorganization are:

State Hospitals

Kansas Neurological Institute

Parsons State Hospital

Rainbow Mental Health Facility

Osawatomie State Hospital

Larned State Hospital

Addiction and Prevention Services

Mental Health Services

Community Supports and Services (Home and Community Based-Service waivers)

Management Operations/Administration

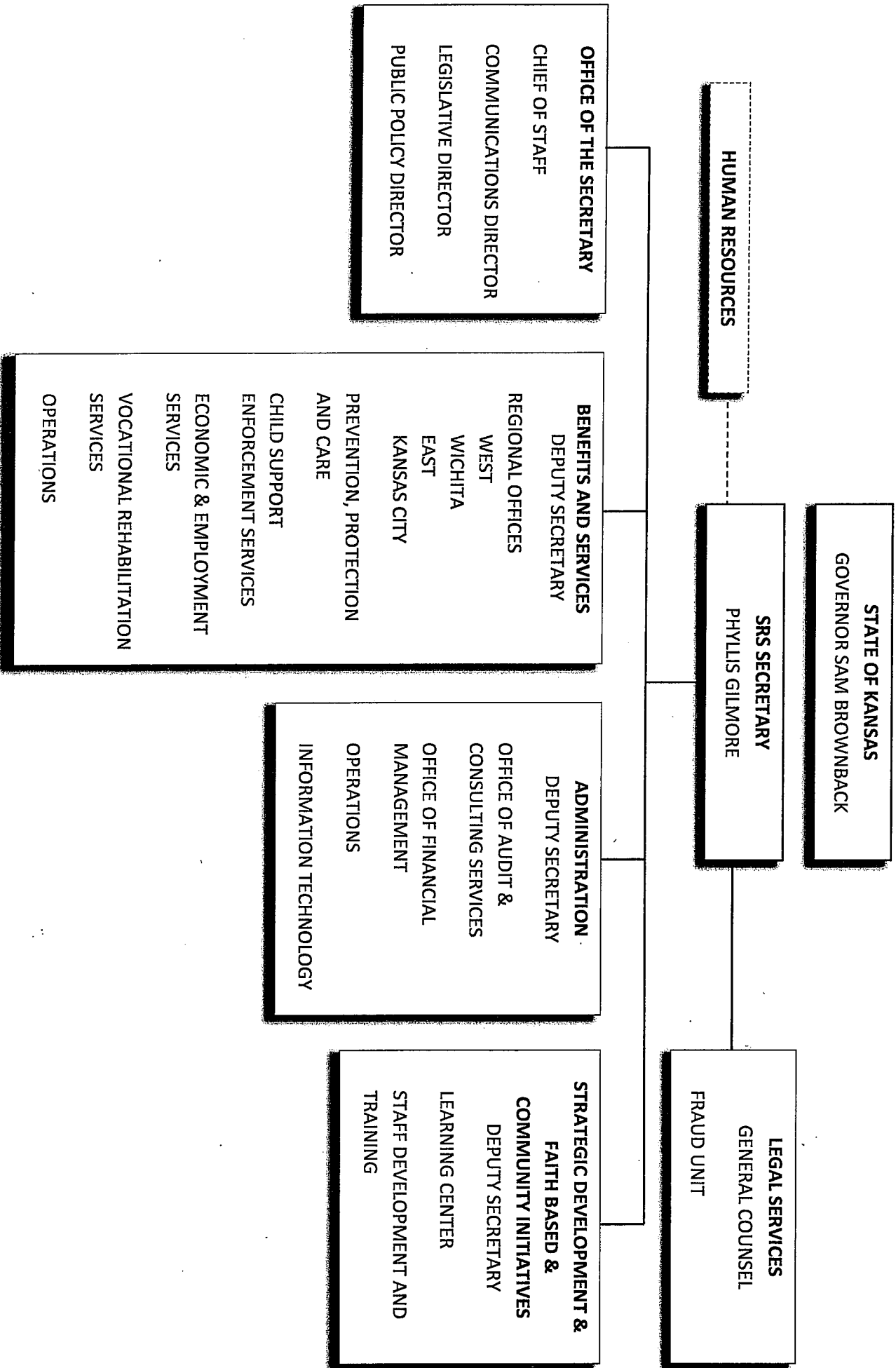
Working in collaboration with KDOA staff, SRS staff is now engaged in a series of cross-agency work teams designed to ensure that staff in KDOA fully understands the basic activities, functions and responsibilities of the DBHS programs and state hospitals so that an efficient and effective merger can occur.

As part of the agency reorganization, in addition to specific members of the DBHS program staff, SRS will provide the administrative positions necessary to support the state hospitals and DBHS programs. Thank you.

Respectfully submitted,

Phyllis Gilmore
Acting Secretary

DEPARTMENT FOR CHILDREN AND FAMILIES



BUDGET COMPARISON

Department of Social and Rehabilitation Services

FY 2012 SRS budget \$1,729,494,259

FY 2012 SRS FTEs 5,454

Department for Children and Families

FY 2013 DCF budget \$611,920,188

FY 2013 DCF FTEs 3,012