



FEDERAL RESERVE BANK OF KANSAS CITY

## Economic Conditions and Outlook for the U.S. and Kansas

KS Legislative Committees  
January 16, 2013

Kelly D. Edmiston  
Federal Reserve Bank of Kansas City

### Overview

- The U.S. economy continues to recover, but at a very modest pace
  - But there remain considerable risks
- Employment growth is thin, in the U.S. and in Kansas, and by some measures, its worse than we think it is
- Kansas has some economic advantages that have mitigated the national economic doldrums, but has concentrations of some industries that have not done well
- The residential real estate market, however, is doing better

January 17, 2013

House Commerce & Economic  
Development Committee

Date: 1-17-13

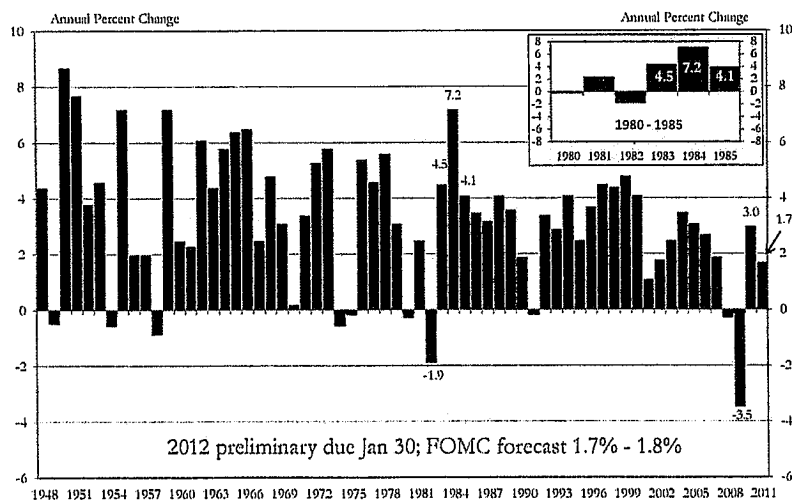
Attachment #: 1-1

Economic Conditions in the U.S. and Kansas

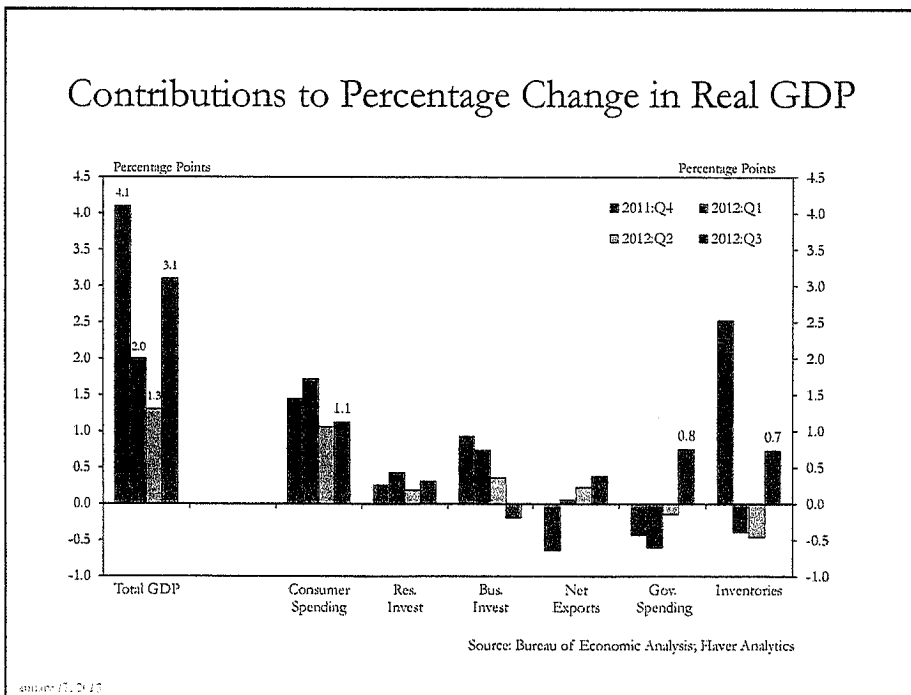
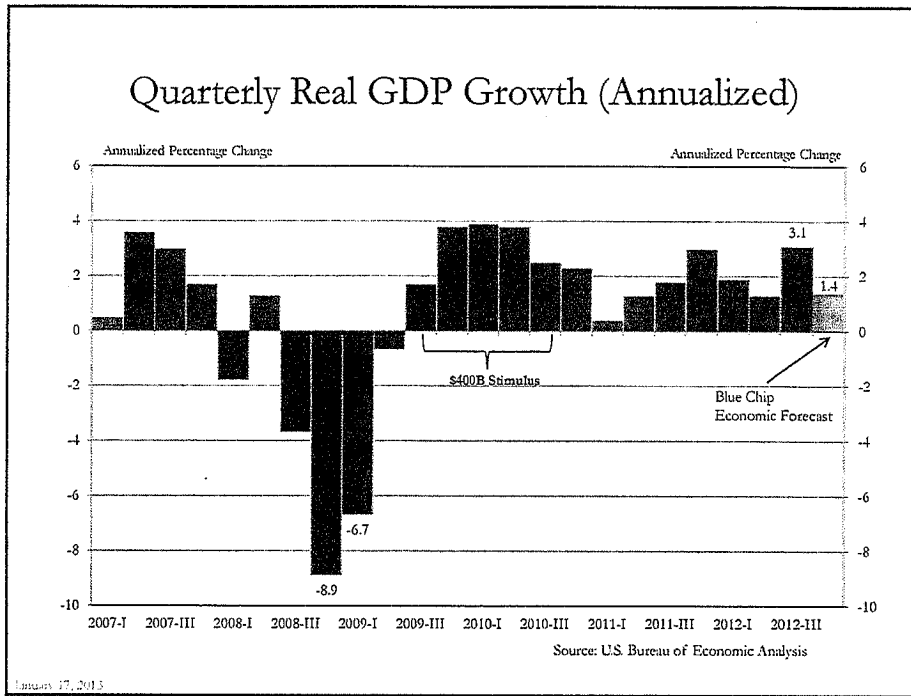
# U.S. ECONOMIC OVERVIEW AND FORECAST

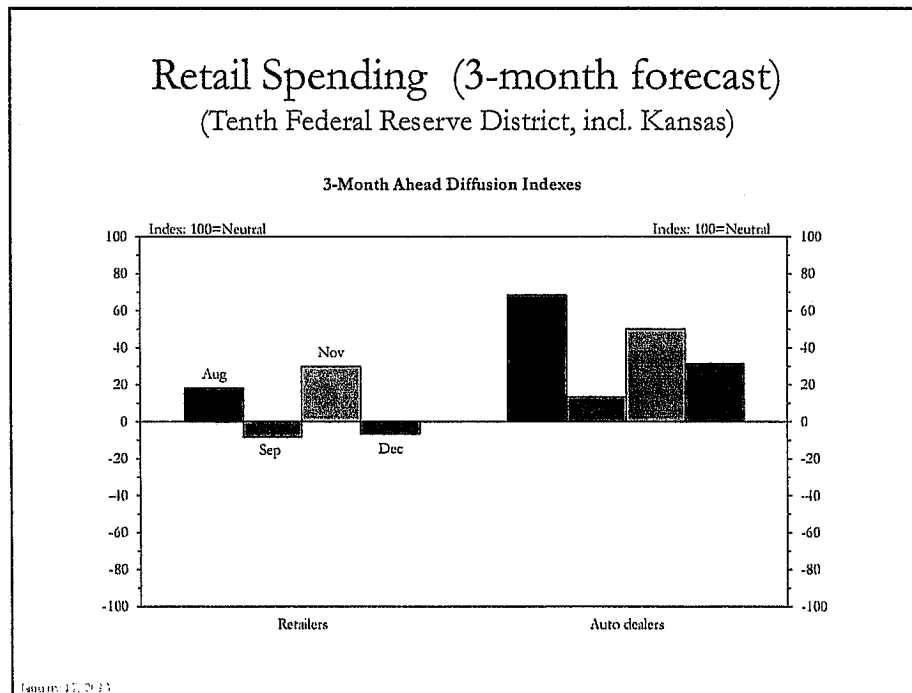
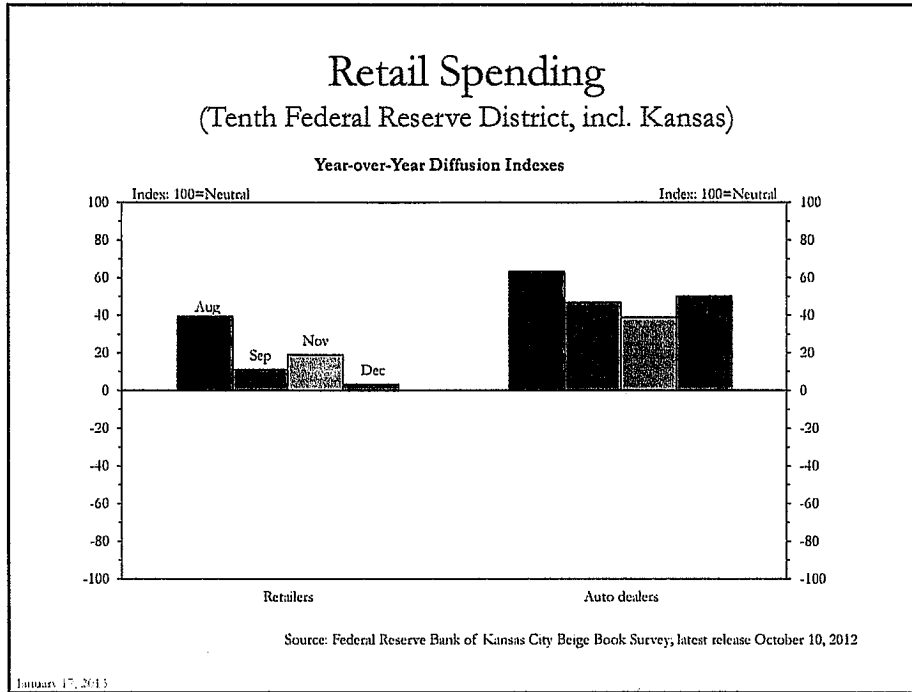
January 17, 2013

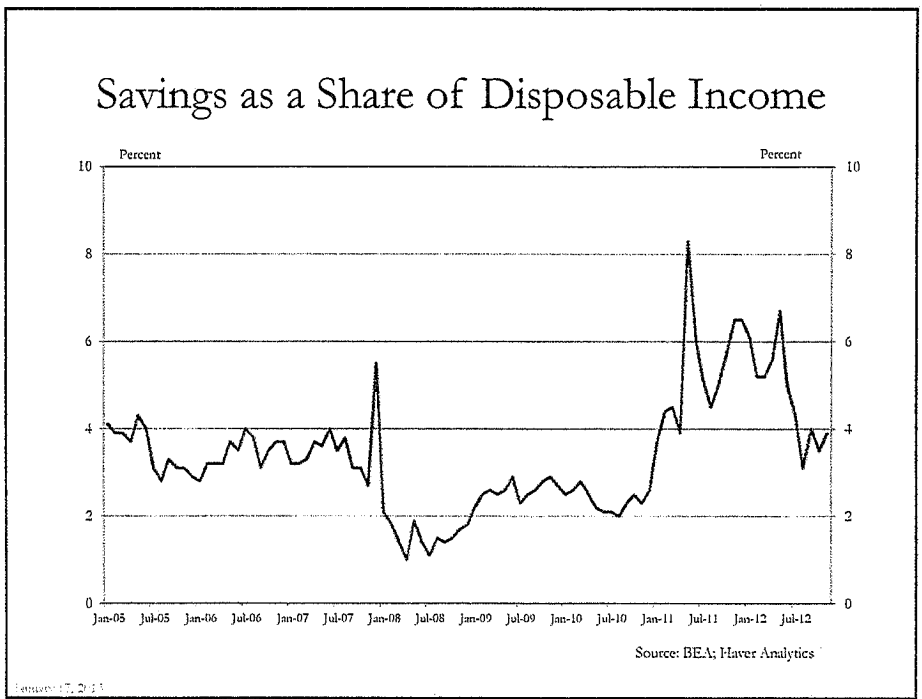
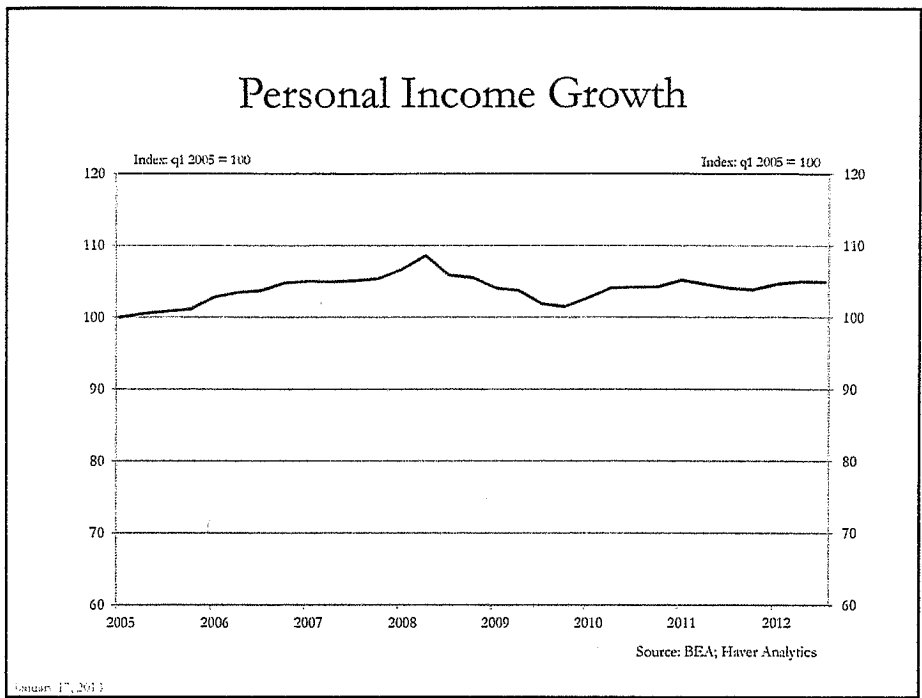
## Annual Growth in Real GDP

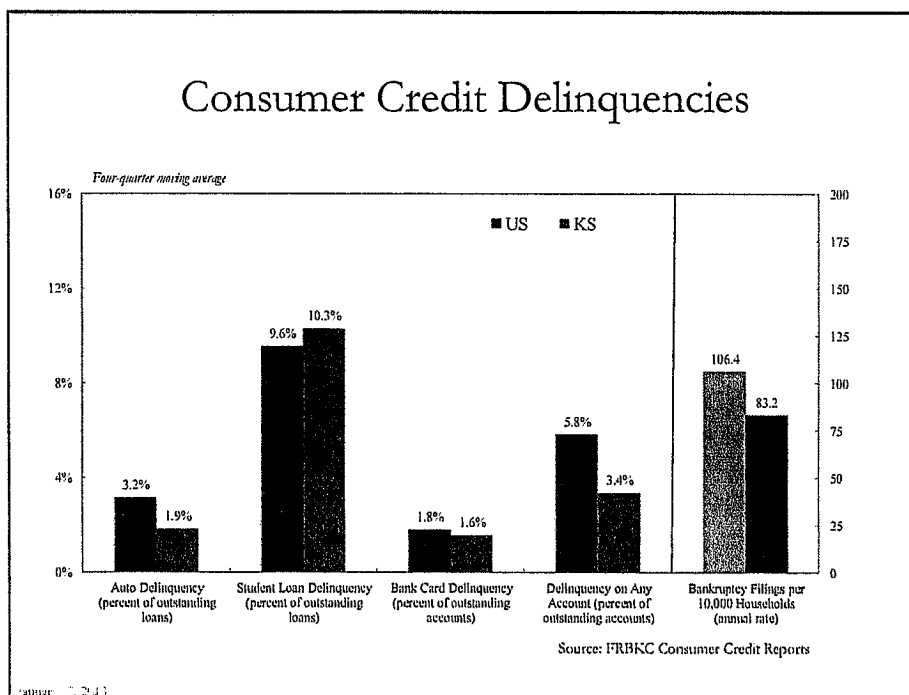
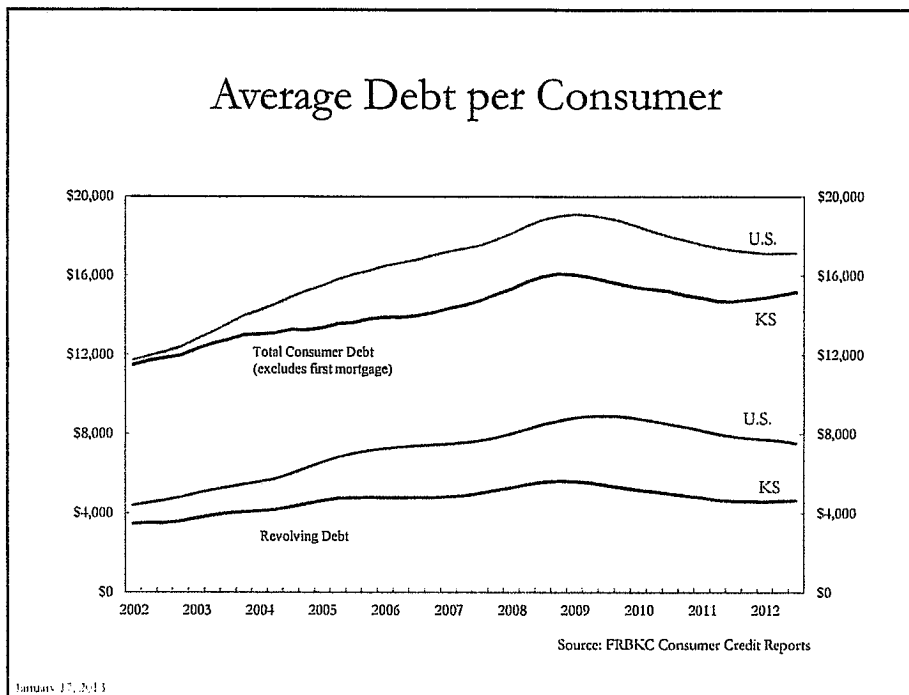


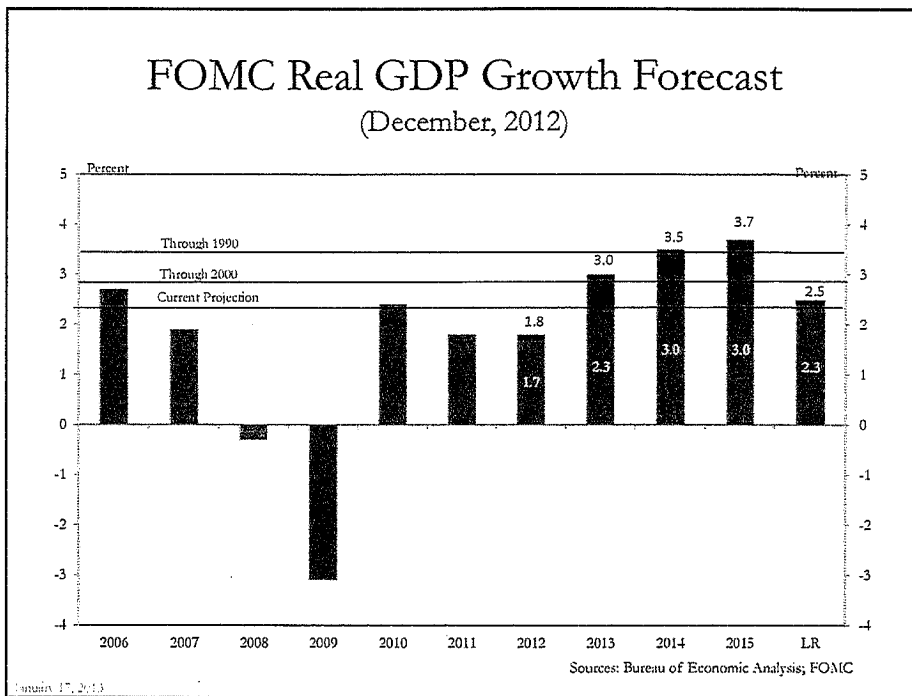
January 17, 2013







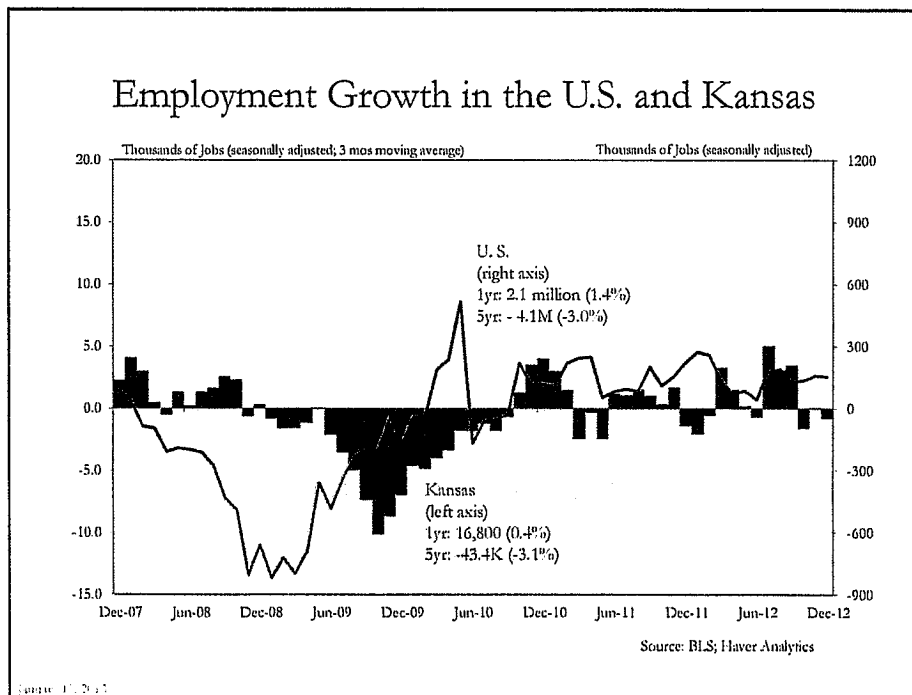
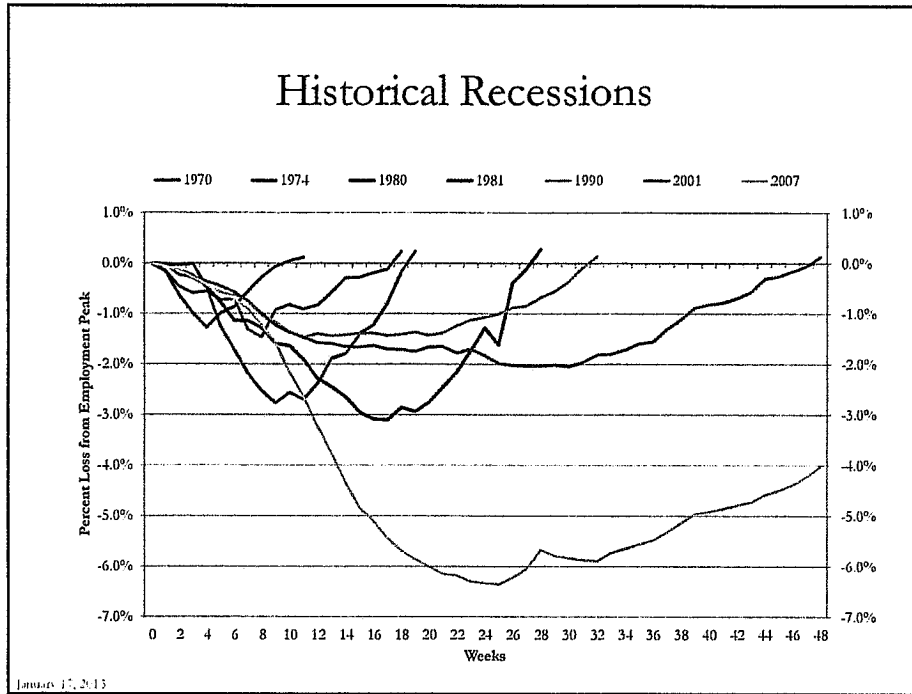




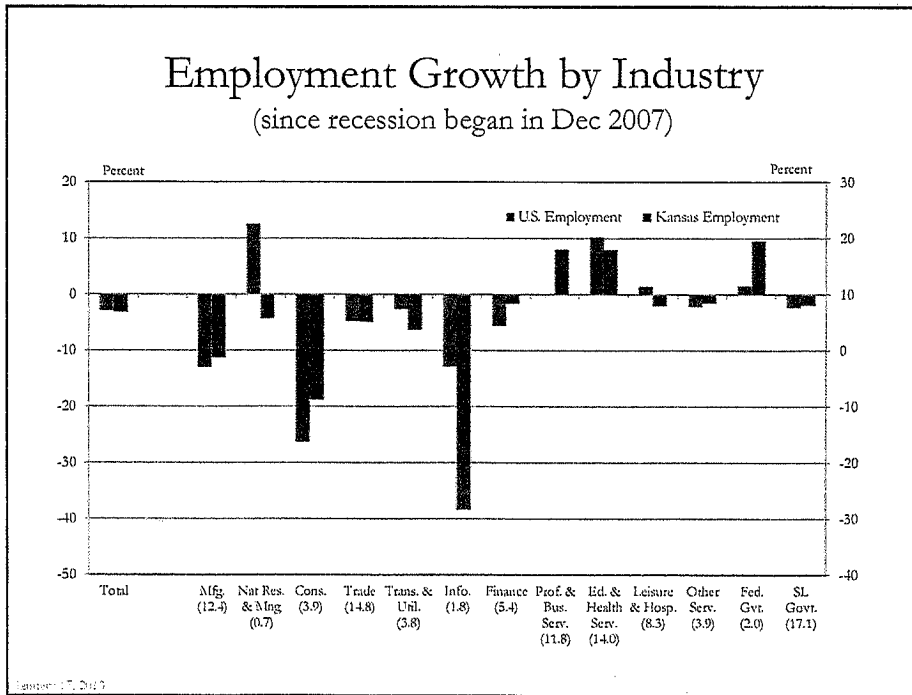
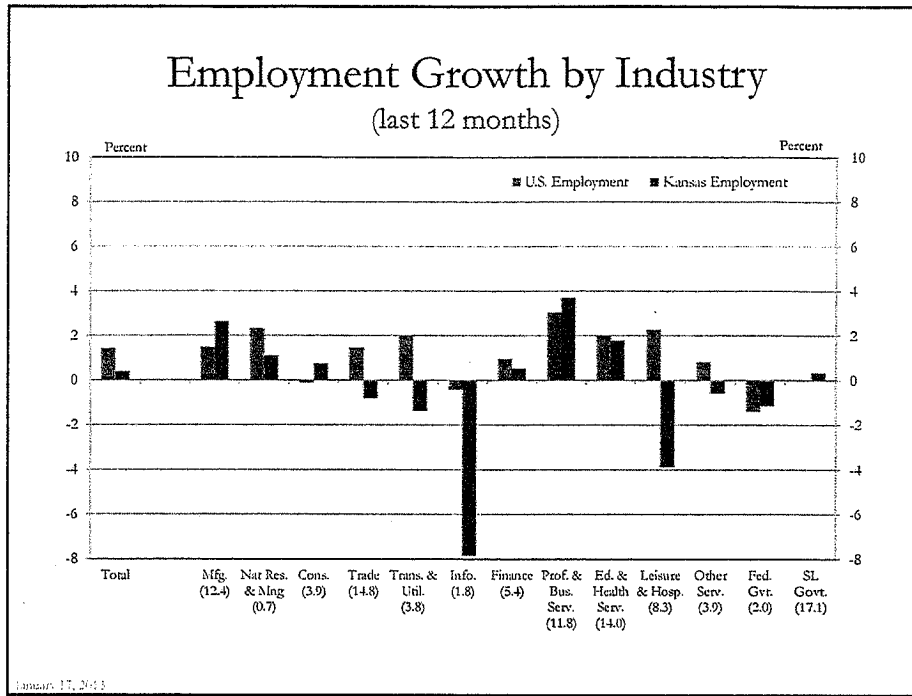
Economic Conditions and Outlook for the U.S. and Kansas

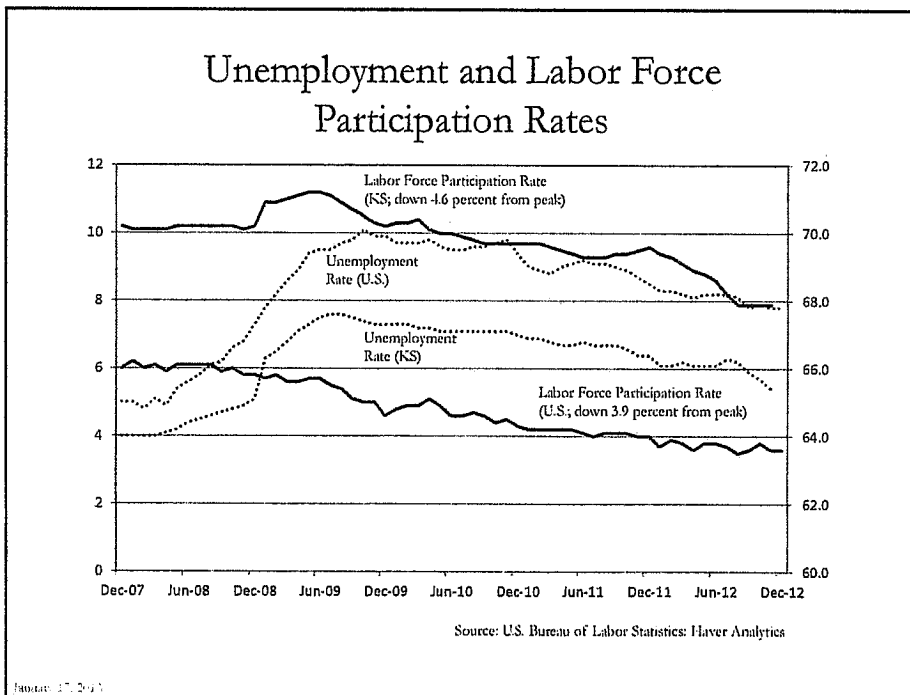
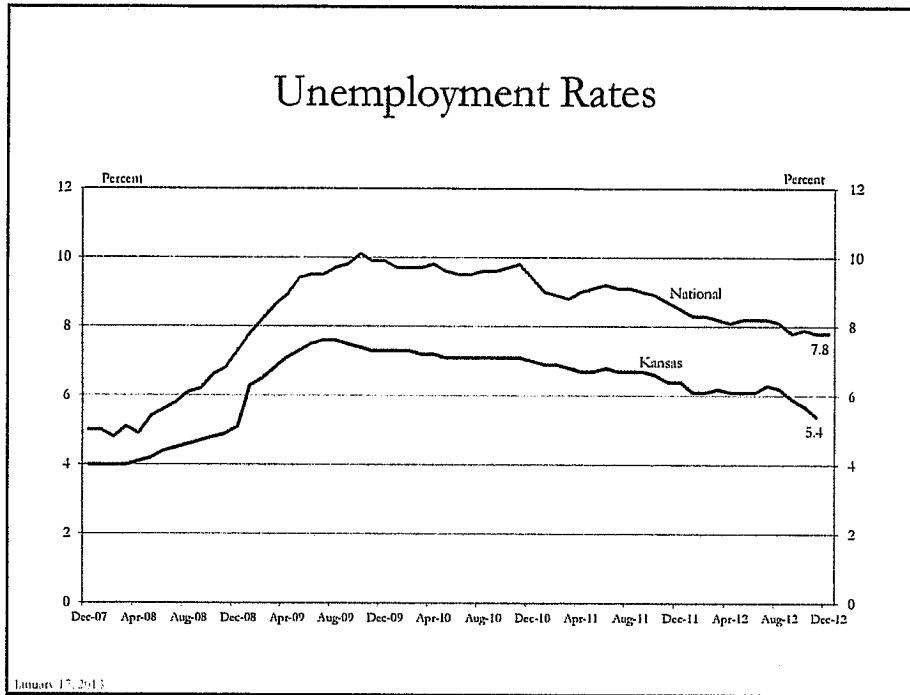
# EMPLOYMENT AND UNEMPLOYMENT

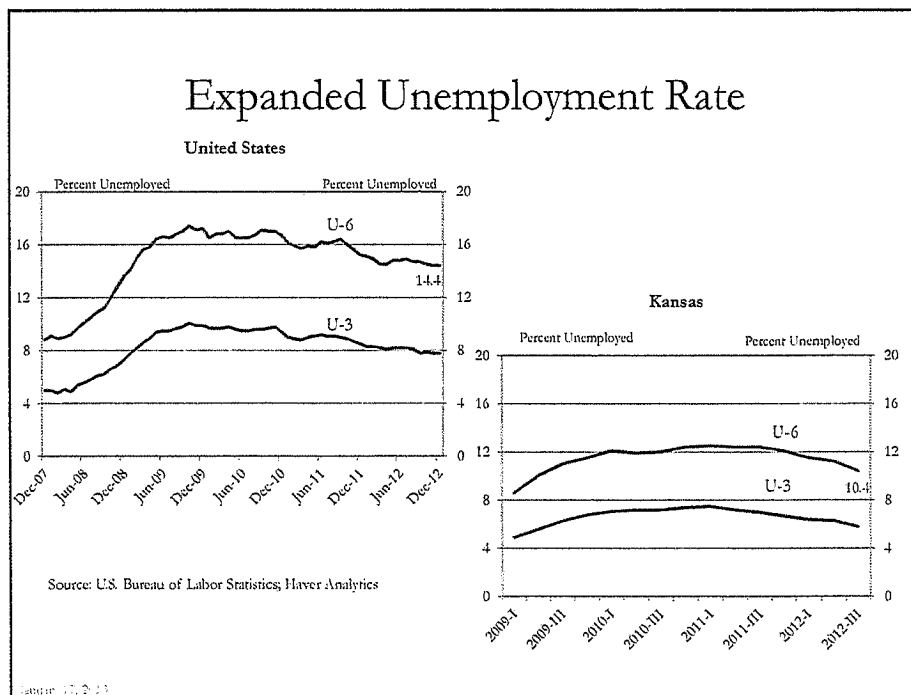
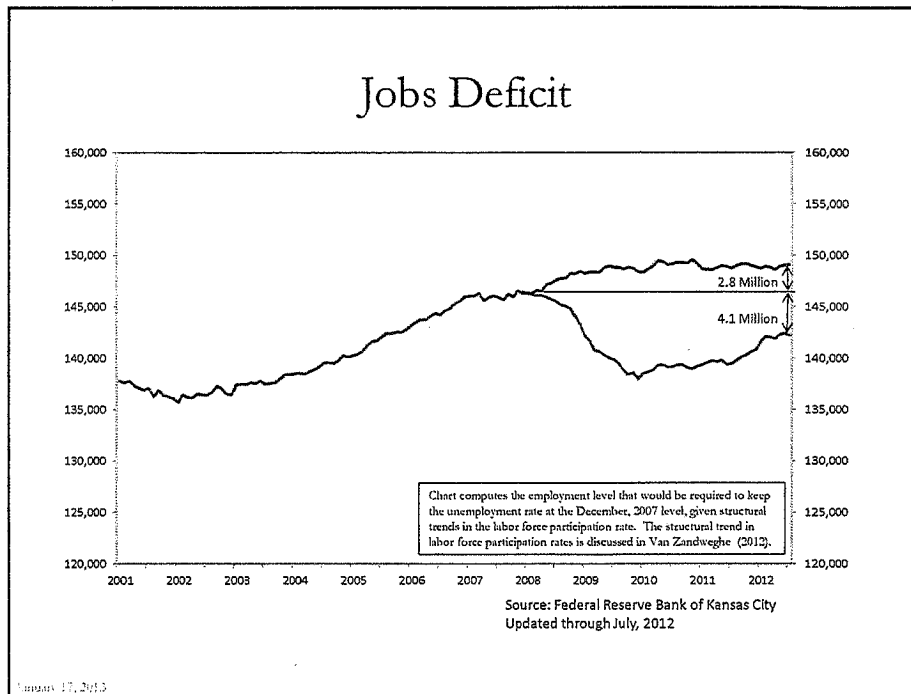
January 17, 2013









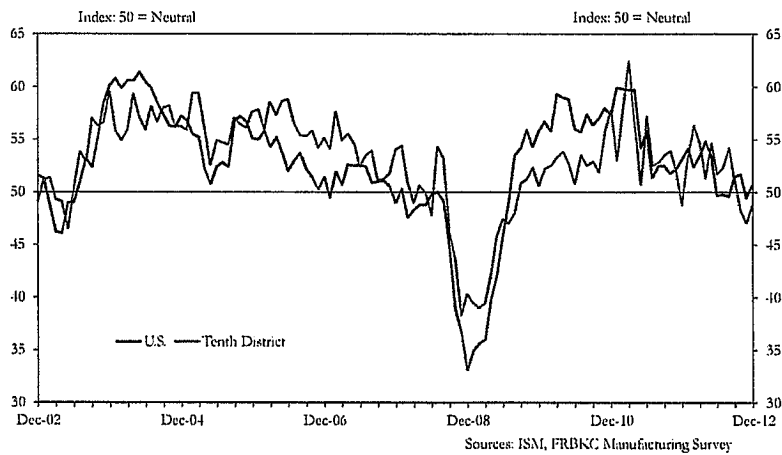


Economic Conditions and Outlook for the U.S. and Kansas

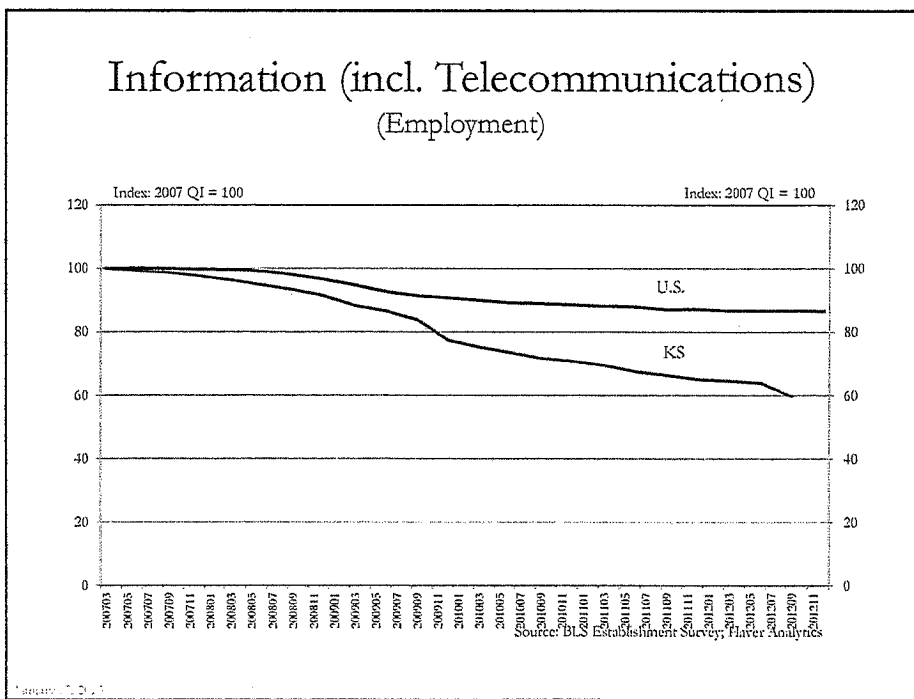
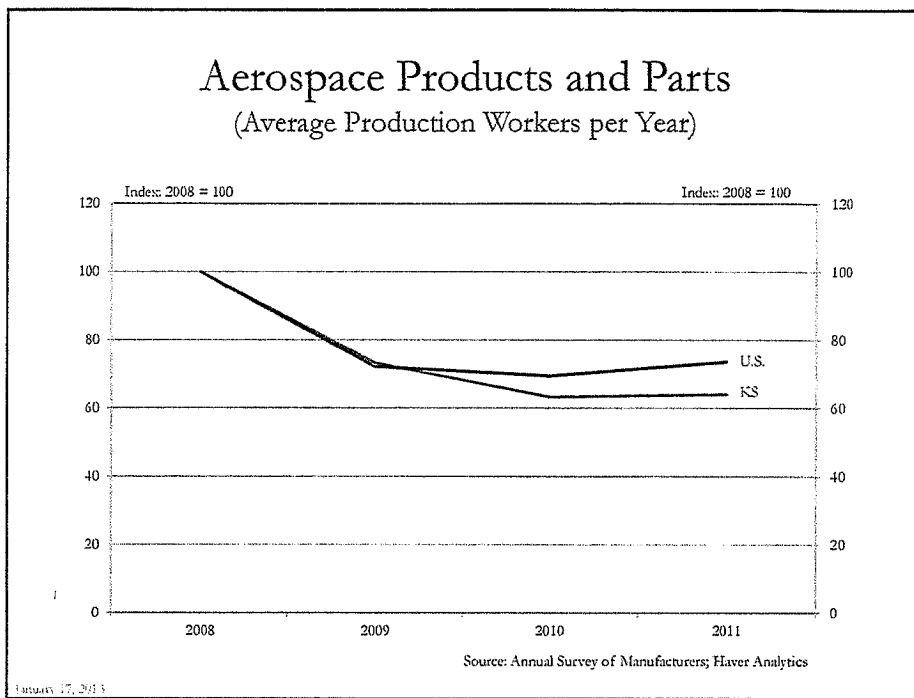
# KEY KANSAS INDUSTRIES

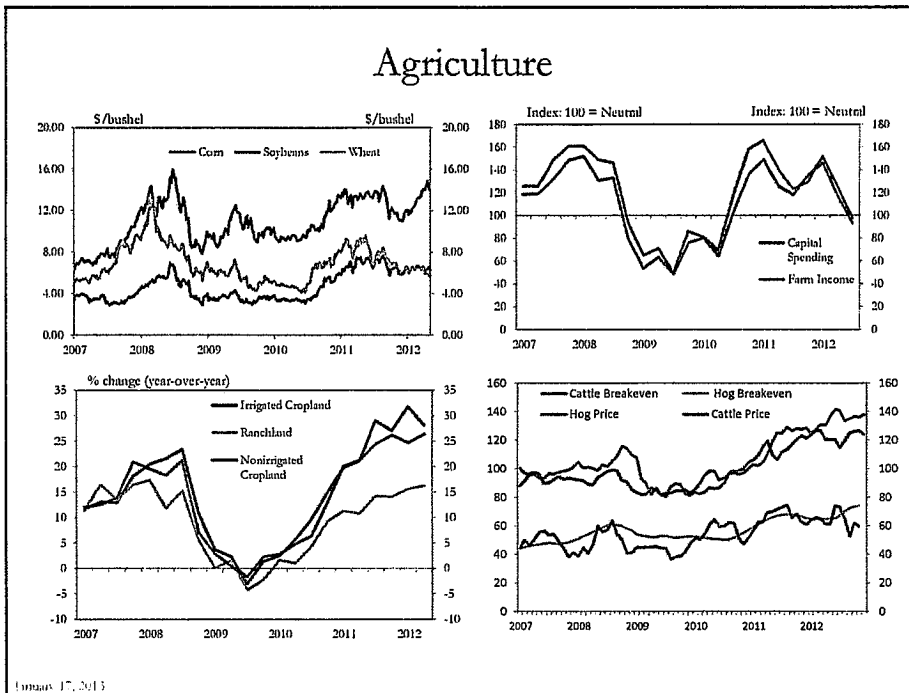
January 17, 2013

## Manufacturing Indexes



January 17, 2013

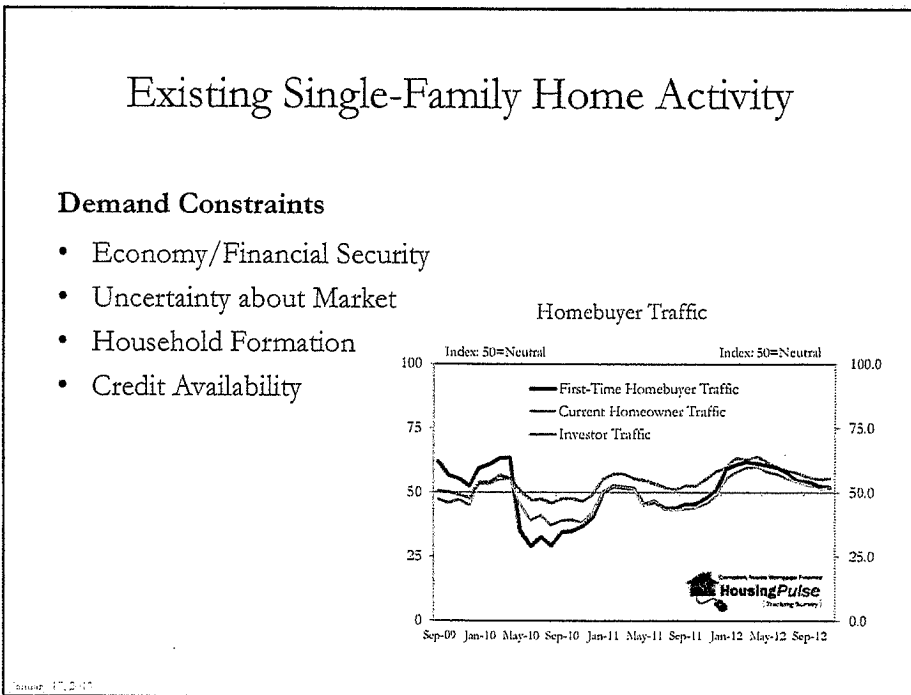
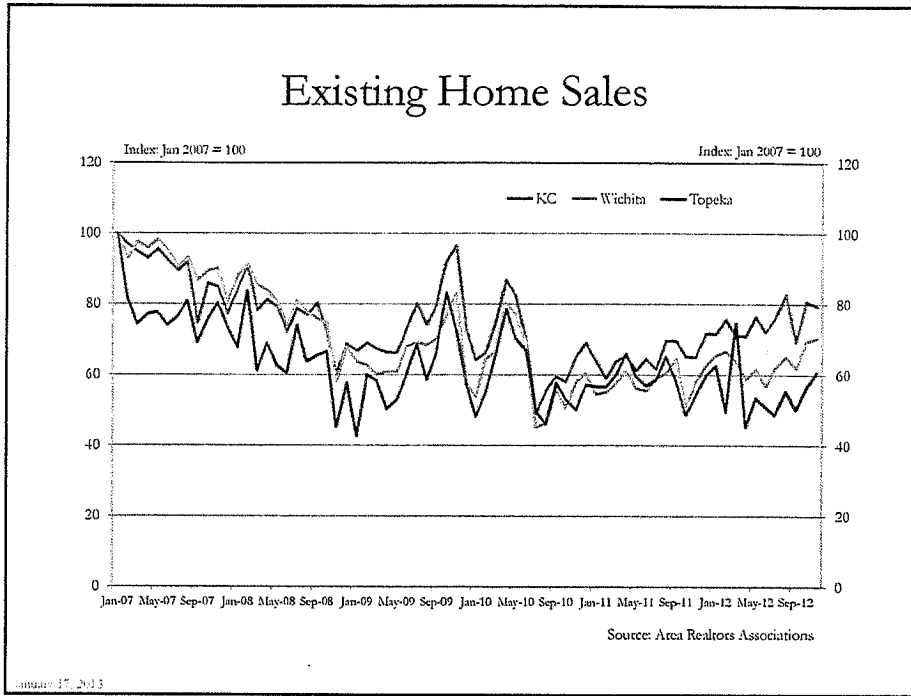


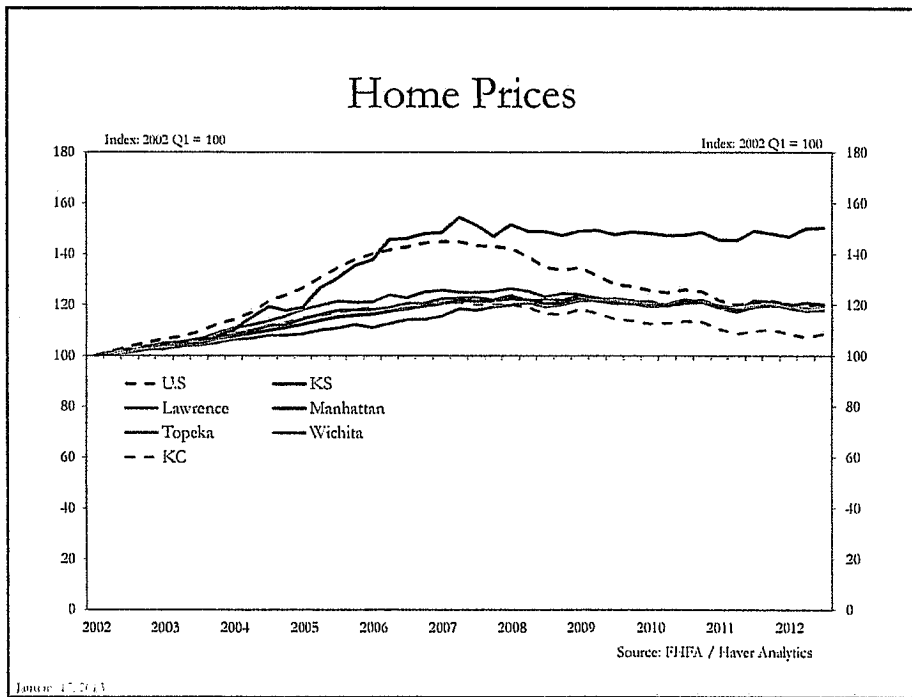
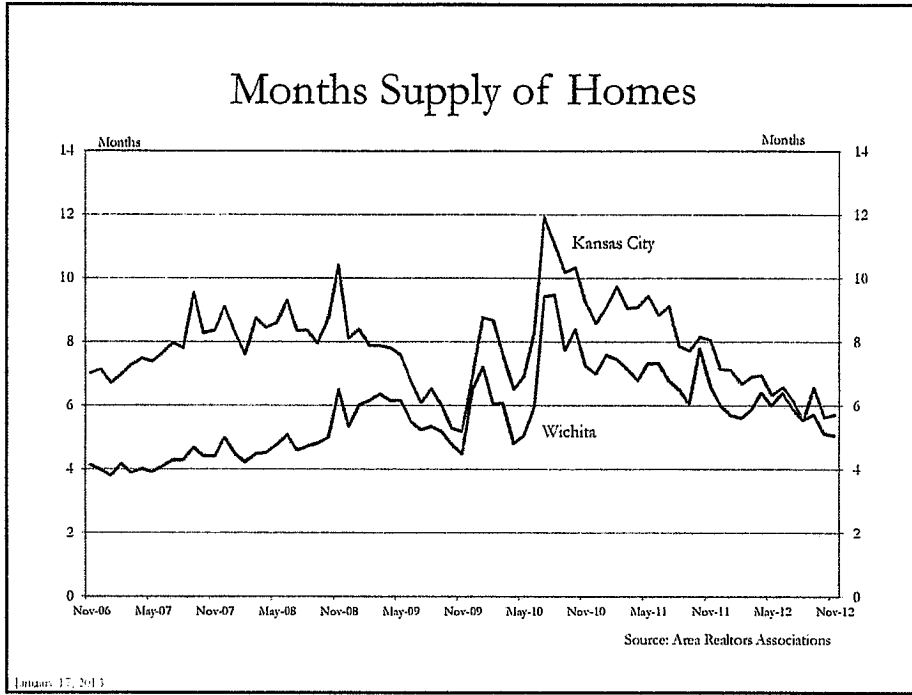


Economic Conditions and Outlook for the U.S. and Kansas

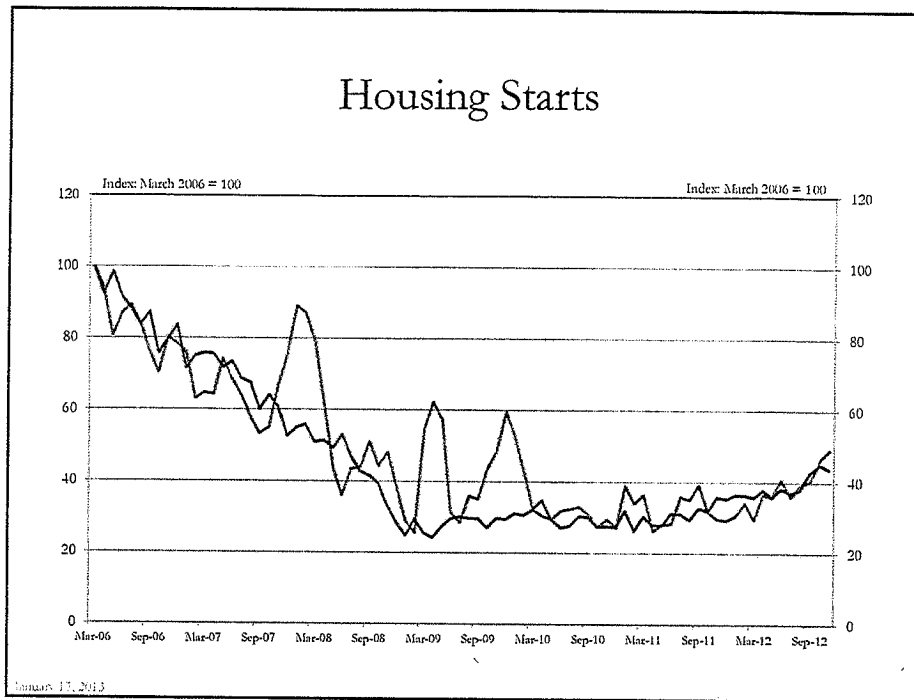
## RESIDENTIAL REAL ESTATE

January 17, 2013





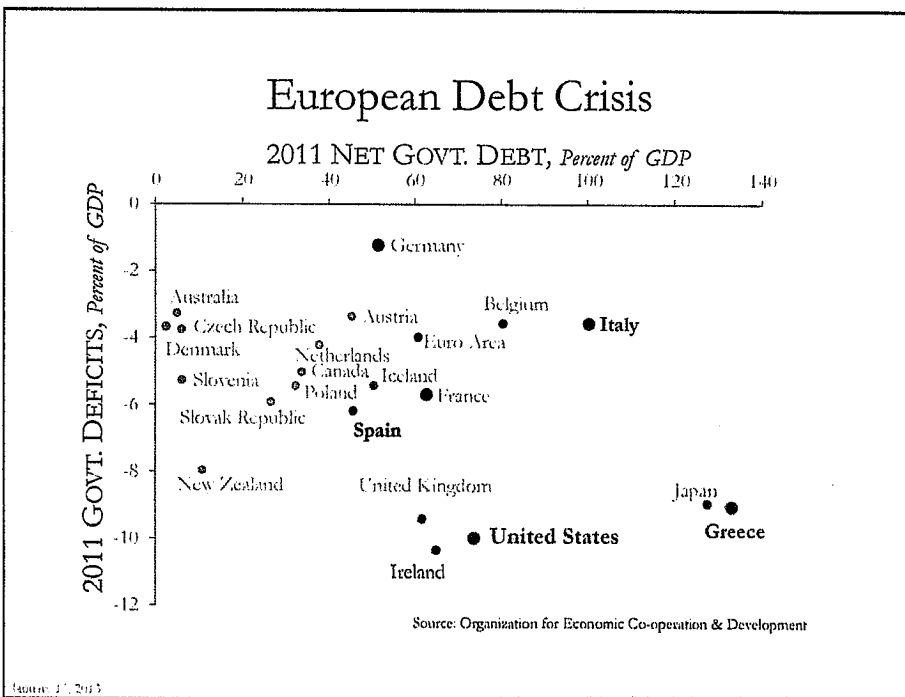
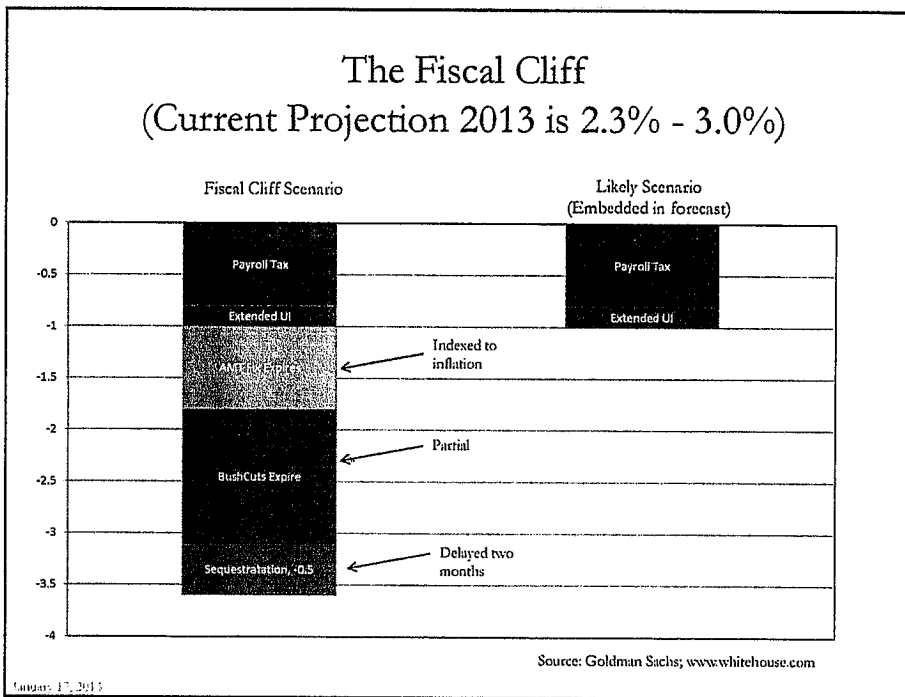


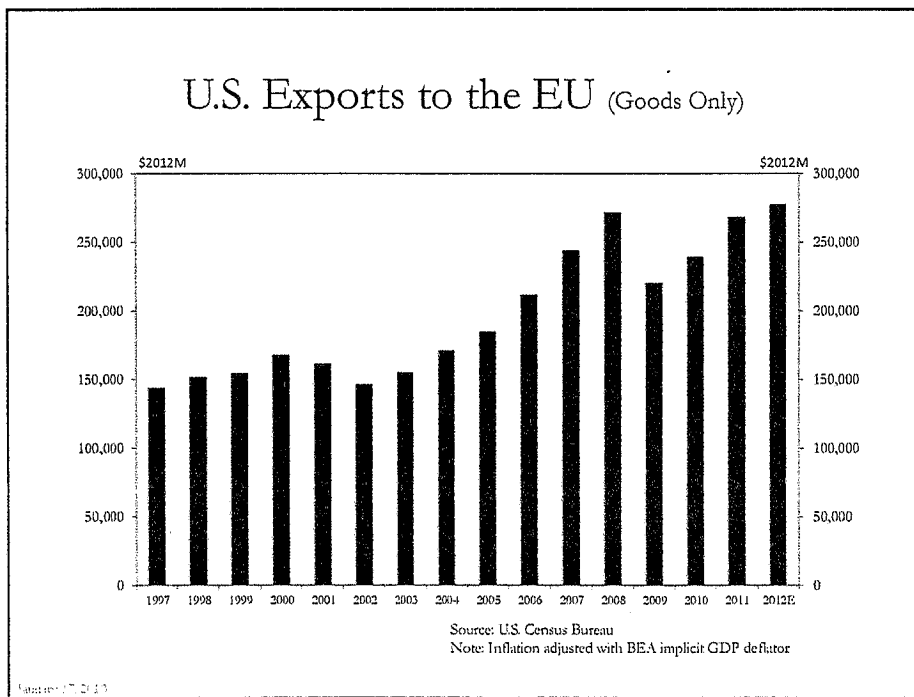
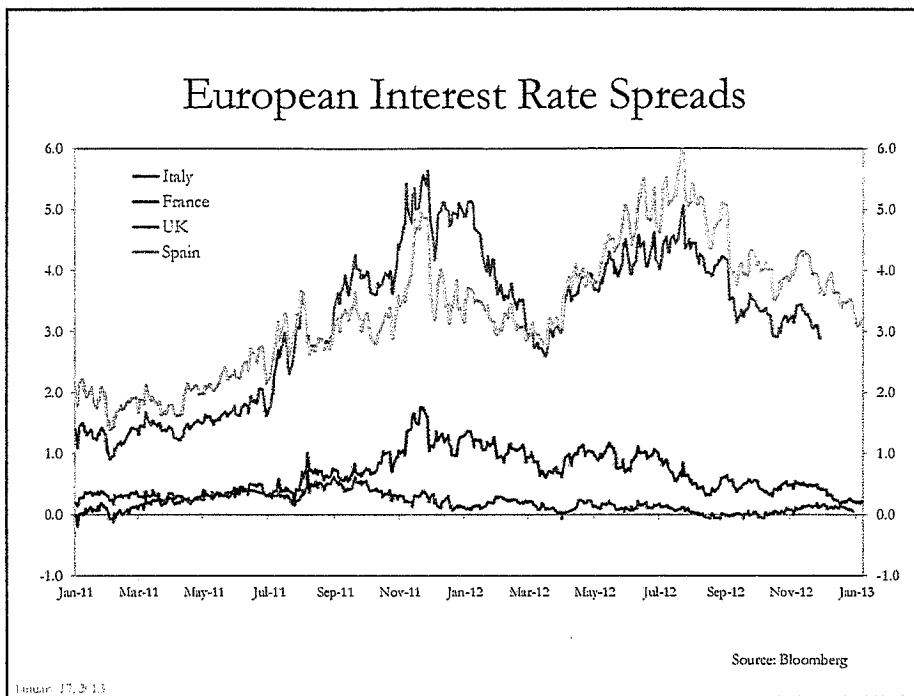



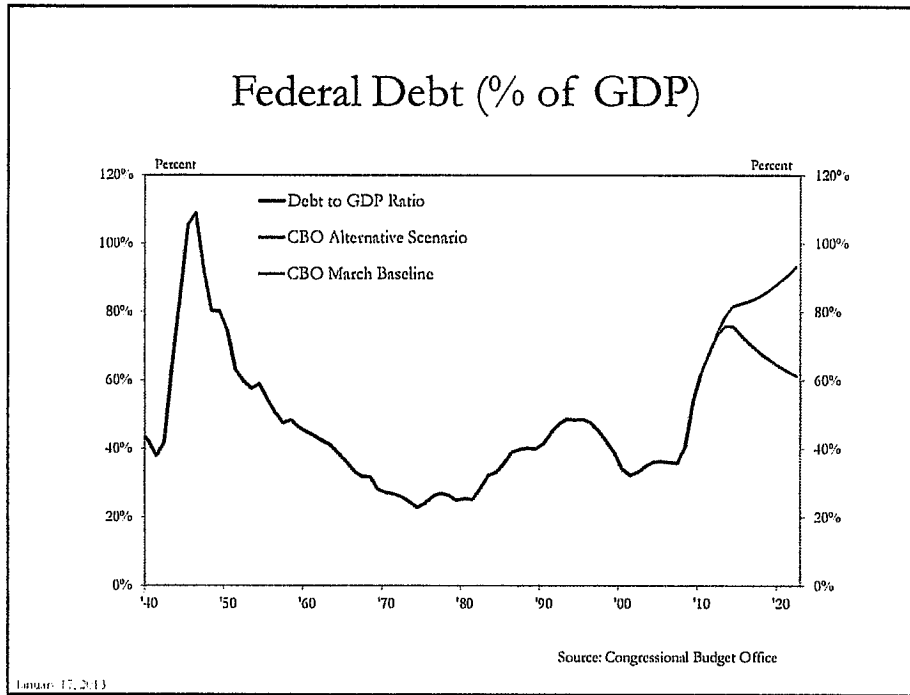
Economic and Commercial Real Estate Conditions and Outlook

## RISKS

January 17, 2013







**FEDERAL RESERVE BANK OF KANSAS CITY**

**Contact Information:**

Kelly D. Edmiston  
Senior Economist  
Community Development

1 Memorial Drive  
Kansas City, MO 64198  
(816) 881-2004  
Kelly.edmiston@kc.frb.org

January 17, 2013