

# Larned State Hospital Virtual Tour



# Larned State Hospital Brief History

- Larned State Hospital opened on April 17, 1914.
- The new 'insane asylum' at Larned was a preferred location because of the plentiful water supply.
- 'Useful employment' (farming) was the method of treatment to be used at LSH.

Early criteria critical to the selection of the first patients to populate the new hospital included being male, possessing the ability to work on the farm and being diagnosed as never becoming well enough to be discharged.



# Larned State Hospital Brief History

- The State Security Program opened on Dillon Building March, 1939.
- The LSH patient population in June of 1946 peaked at 2,035. In an effort to ease the overcrowding, an annex was opened at the Army Air Force base in Great Bend which housed approximately 300 patients. The unit was designed to exclusively deal with elderly and custodial patients.
- The farming operation continued until the 1950's. Adolescents and children were admitted in the late 1960's and 1970's, until services were moved to communities on May 10, 2010. The Adult Treatment Center building opened in 1990 to house the general psychiatric population on what is now called the Psychiatric Services Program, serving individuals admitted from the LSH catchment area as a voluntary or civilly committed patients.
- The Sexual Predator Treatment Program was established by law in 1994.

# Larned State Hospital

## **Mission Statement**

“To provide a safety net of mental health services to Kansans in partnership with consumers, community providers and the justice system, and to deliver support services to related agencies.”

## **Vision Statement**

“State of the art services provided by caring and competent staff.”

## **Values Statement**

“We are committed to continuous learning, quality, stewardship, and principled service to others.”

# Three Distinct Hospital Programs

Larned State Hospital (LSH) is a psychiatric hospital owned and operated by the State of Kansas under the Kansas Department for Aging and Disability Services (KDADS). LSH operates under the laws of Kansas and is accredited by The Joint Commission (TJC). The Psychiatric Services Program is also certified by the center for Medicare and Medicaid Services.

The hospital has three separate and diverse patient programs:

- The Psychiatric Services Program
- The State Security (Hospital) Program
- The Sexual Predator Treatment Program

# Psychiatric Services Program (PSP)



PSP is housed on the Adult Treatment Center Building (ATC). The ATC Building opened in 1990. Officially named the Eisenhower Adult Treatment Center in honor of the 34<sup>th</sup> President, Dwight D. Eisenhower. This building is a 90 bed facility. Also housed on this building (north wing) is the LSH Human Resources Department.

# Psychiatric Services Program (PSP)

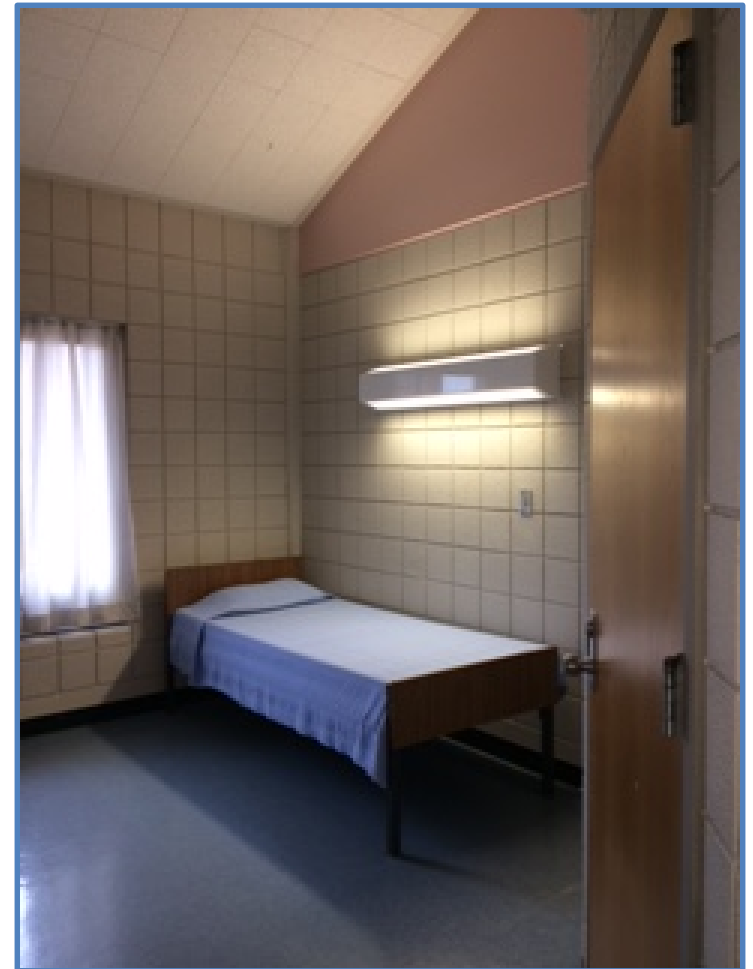
This program serves voluntary as well as court committed adults with mental illness. Patients enter the program after having been screened by a Qualified Mental Health Professional from one of the Community Mental Health Centers (CMHC) in Central and Western Kansas.

Services within the PSP are provided within three (3) distinct units: one for acute/crisis stabilization and treatment and two for treatment and rehabilitation. Patients are admitted from the LSH catchment area for inpatient evaluation and treatment. Patients may present with a variety of symptoms due to mental illnesses such as schizophrenia, major depression, anxiety disorders, bipolar disorder, traumatic brain injury, and/or post-traumatic stress disorder. Symptoms are often severe and may include hallucinations, delusions, suicidal ideation, and behavioral problems.

# Adult Treatment Center Building (ATC) Patient Room



ATC building has private and semi private rooms. Private room (desk side and bed side) are pictured here.





# State Security Program (SSP)



The State Security Program is housed on the Isaac Ray Building. This building is 301 thousand square feet and opened in 2005. The building is a 250 bed facility with 9 units on 3 communities. SSP occupies 6 of the 9 units. This building also houses one SPTP 20-bed unit. Two units are vacant. Additionally, the LSH Pharmacy, Lab, Nursing Call Center, and medical clinics are located in this building.

# State Security Program (SSP)

The State Security Program (SSP), originally opened March 27, 1939, to house the criminally insane, opened on the Dillon building, with the transfer of 100 patients from Lansing State Prison.

The State Security Program serves all 105 counties in Kansas. The SSP (also known as the State Security Hospital) serves male and female forensic populations from the entire state of Kansas. This program provides a secure setting for forensic evaluations and psychiatric inpatient treatment.

The SSP is housed in the Isaac Ray building and currently serves 170 patients on six units. During 2016, a reduction of 60 State Security Program beds occurred in two phases, June 10, 2016 (South 2 unit), and South 3 was closed April 26, 2016. Patients from those two units were returned to the KDOC where they are currently housed at a cost of \$40.00 per day.

# Isaac Ray Building Unit

Nursing Station



Unit Hallway Inside Isaac Ray Bldg.

Patient Room (Isaac Ray)



# Sexual Predator Treatment Program (SPTP)



The Sexual Predator Treatment Program is primarily housed on the Dillon Building (4 units). Additionally, one 20 bed unit is on the Isaac Ray Building and two units are on Jung Building. A transitional housing unit is housed on the Meyer Building.

# Sexual Predator Treatment Program (SPTP)

The Sexual Predator Treatment Program (SPTP) of Kansas was established in 1994.

The program was given two primary missions. First, SPTP provides for the public safety to prevent further victimization of others by sexual offenders assigned to the program.

This requires adequate perimeter security and the ability to establish a safe environment for staff and residents within the boundaries of SPTP.

The second mission of SPTP is to provide quality treatment programming to those residents willing to engage in the work of personal change. The ultimate aim of this treatment is to reduce the individual's risk for re-offense to a level, which would allow the return of the individual to society as a contributing, productive citizen.

# SPTP Treatment Progression

Residents start their SPTP experience on Larned State Hospital (LSH) grounds. They remain at LSH from admission through Tier Two of treatment. While on Tier Two, residents are gradually moved through a structured series of escorted outings. Once a less-structured level of care is deemed appropriate and approved by the Progress Review Panel (PRP), the resident is transferred to an SPTP Reintegration Facility (RF).

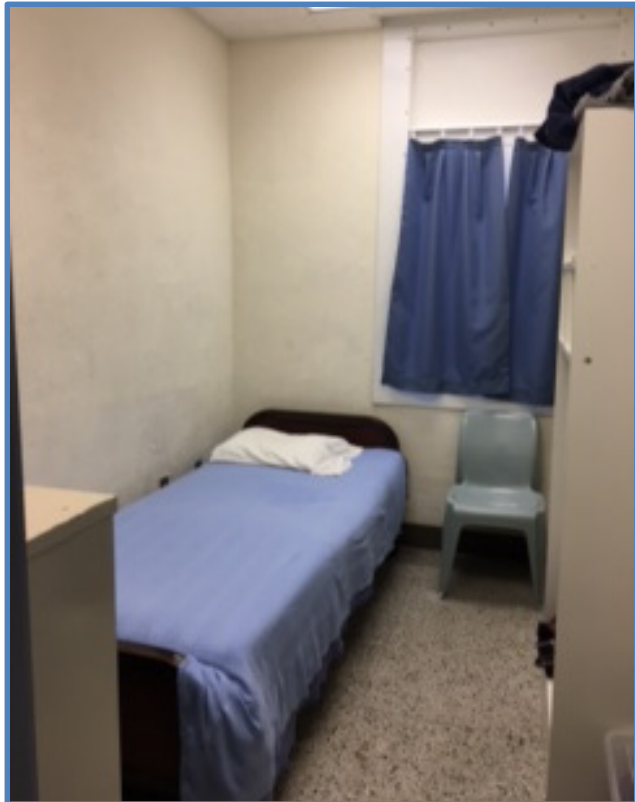
Currently, SPTP has four RF's: MiCo (Miami County) House located on the grounds of Osawatomie State Hospital (OSH), Maple and Willow Cottages which are located on the grounds of Parsons State Hospital (PSH) and Meyer House East which is located on the grounds of LSH. Tier Three of the program and court ordered Transitional Release take place at one of the RFs

Meyer House East and the MiCo House are administrated and managed by LSH. Maple and Willow Cottages are administratively managed by PSH. However, all of the RFs follow the same treatment protocols.

The Program is structured in a graduated manner so that public safety is paramount.

# Sexual Predator Treatment Program (SPTP)

Resident Room - Dillon Building



Resident Room - Dillon Building

# SPTP Buildings at LSH

Dillon Building  
(view from behind)



Meyer Building – Transitional Housing



Jung Building



# A few LSH Campus Snap Shots



Engineering



Auditorium



Fire Station

Activity Therapy



Laundry



**Larned State Hospital is rich in history. The agency celebrated it's 100 year anniversary in April, 2014.**

Although met with challenges from time to time, this hospital continues to serve the citizen's of Kansas through the three distinct hospital programs which serve patients and residents as well as providing a large employment base in western Kansas.



100 Year Anniversary Coin