



WICHITA STATE  
UNIVERSITY  
OFFICE OF THE PRESIDENT

Chairman Jones and members of the House Higher Education Budget Committee,

Wichita State University stands in support of SB 343 and respectfully requests that you recommend the bill favorably for passage.

Over the past three years, Wichita State University has been in the process of developing its Innovation Campus. The series of projects designed to grow the Kansas economy through applied learning and research will total 125 acres which represents a relatively large development for that area of Wichita. Throughout this development process, easements and other enhancements have been necessitated on previously untouched land to facilitate this construction in addition to the building of new facilities. WSU discovered through this process that several parcels of land totaling 8.27 acres are currently not deeded to WSU but rather to the Kansas Board of Regents or the State of Kansas (noted in highlighted areas in the attached map) even though they are located on WSU's main campus. This was a practice that was not uncommon at one point in the State's history, but it does create additional legal paperwork that can slow the process since development is occurring on behalf of an entity that is not the deed holder. Through conversations with KBOR and the Attorney Generals' Office, it was recommended to pursue a legislative correction to this inconsistency and transfer the deeds of those parcels of land to WSU to prevent unnecessary delays of future development of land.

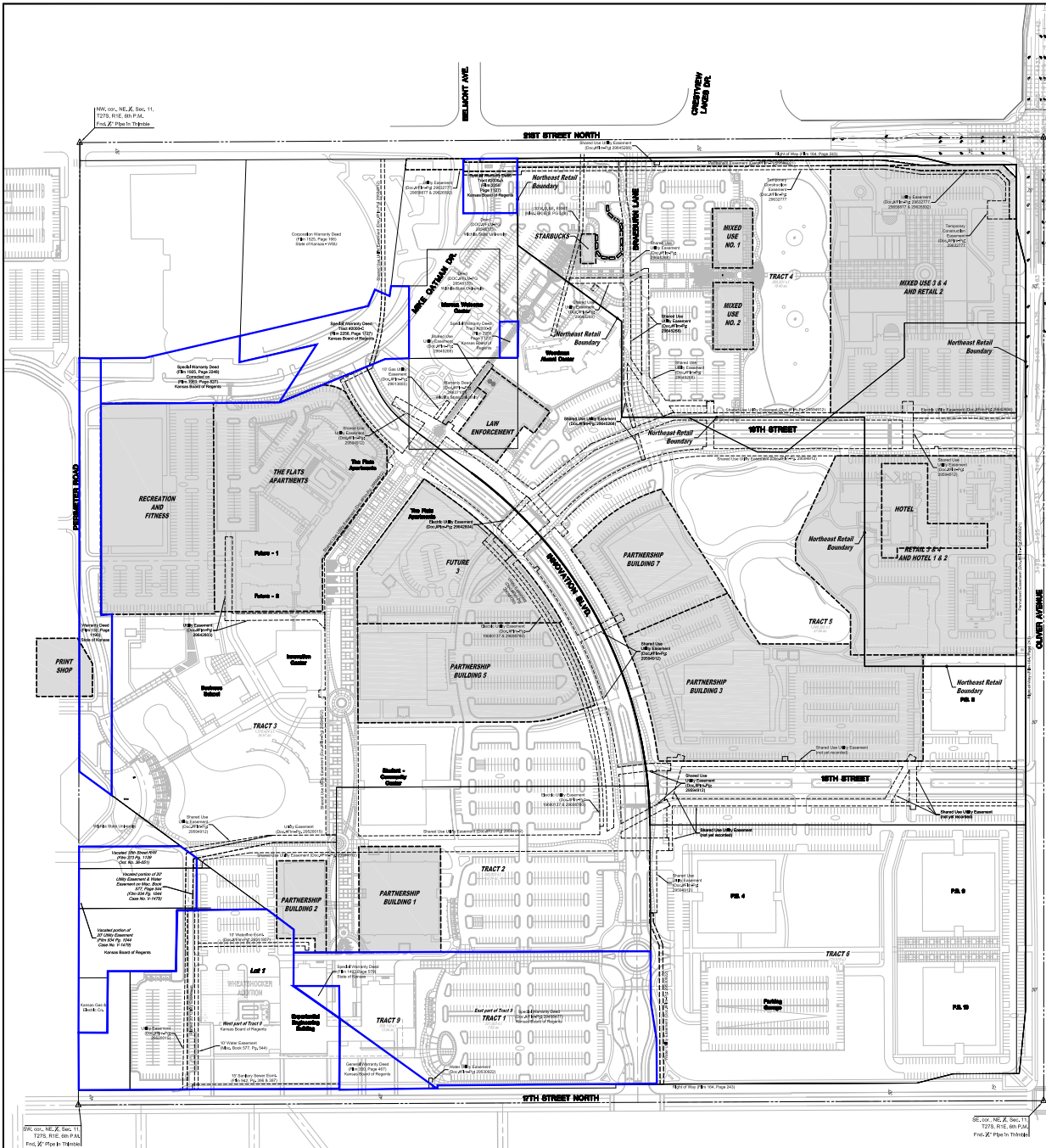
This legislation will benefit Wichita State University by bringing uniformity and consistency in land titles for the entire Innovation Campus and contiguous areas. This legislation will also further the Innovation Campus development creating applied learning opportunities for students and research capabilities for private business and the community by providing Wichita State University the ownership of the land titles to authorize certain land agreements and transactions.

There will be no costs relating to this transaction except for minimal cost of survey and title work.

Wichita State University respectfully asks for your support of this legislation that will help foster economic development and support the mission and vision of WSU.

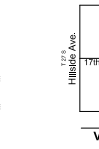
Sincerely,

John Bardo  
President

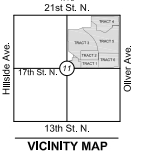
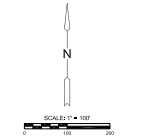


NE. CO. NE. 1/4, SEC. 11,  
T27S, R1E, 6th P.M.,  
Plan. X' Plan to Thruhole

NE. CO. NE. 1/4, SEC. 11,  
T27S, R1E, 6th P.M.,  
Plan. X' Plan to Thruhole



- LEGEND**
- - - - - Section Line
  - - - - - Tract Line
  - - - - - Easement Line
  - - - - - Lease Boundary Line



NE. CO. NE. 1/4, SEC. 11,  
T27S, R1E, 6th P.M.,  
Plan. X' Plan to Thruhole

NE. CO. NE. 1/4, SEC. 11,  
T27S, R1E, 6th P.M.,  
Plan. X' Plan to Thruhole

NO.	REVISION	DATE
1	REV. '16' & '17	08/17/17
2	REV. '18' & '19	08/17/17

©2017  
MKEC Engineering  
All Rights Reserved  
www.mkec.com

These drawings and their contents, in whole or in part, are the sole and exclusive property of MKEC Engineering, INC. and may not be used or reproduced in any way without the express consent of MKEC.

**MKEC**  
MKEC Engineering, INC.  
Wichita, KS - 316.004.8000

**OVERALL ENTITLEMENT EXHIBIT  
WSU - INNOVATION CAMPUS  
WICHITA, KANSAS**

PROJECT NO. 4401010547 DATE: AUG. 2017 SHEET NO. 1 OF 1

DRAWN BY: JGD DESIGNED BY: JGD APPROVED BY: SPE