

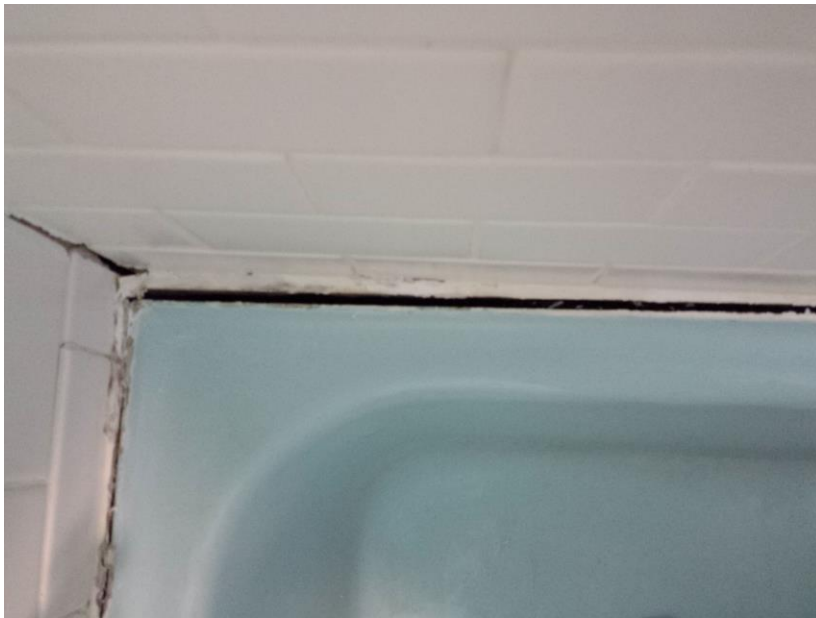
Photos of Earthquake Damage: Lori Lawrence, 321 N. Lorraine, Wichita 67214



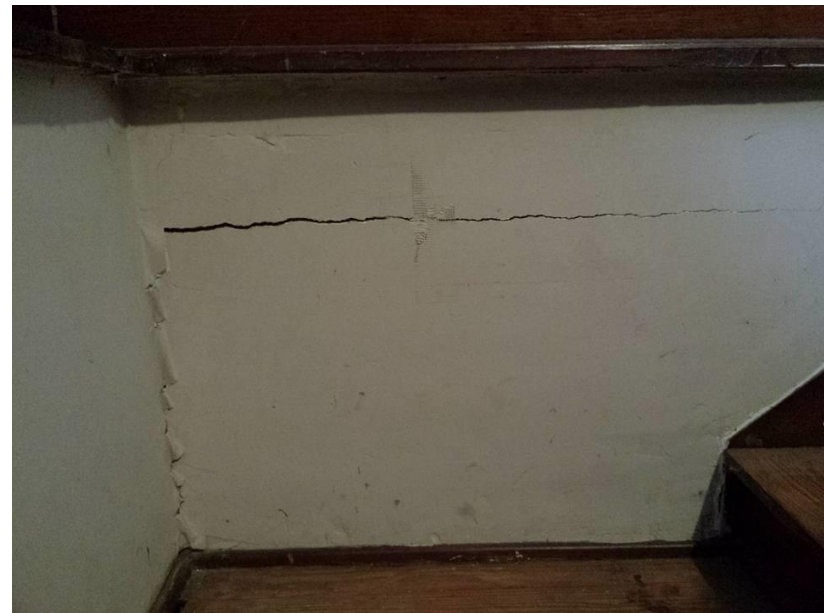
What my basement floor now looks like, post-earthquakes (photo #1)



A better look at the crack in the corner of my bathroom (#3)



My newly remodeled bathroom, tub now separated from wall (#2)



Horizontal and corner cracking are indicative of earthquake damage (#4)