

State of Kansas
House of Representatives

STEVE HUEBERT
REPRESENTATIVE, 90TH DISTRICT
619 N. BIRCH
VALLEY CENTER, KS 67147
(316) 755-1943
OFFICE: 149-S STATEHOUSE
TOPEKA, KANSAS 66612
(785) 296-1754
(800) 432-3924
TTY (785) 296-8430



TOPEKA

COMMITTEE ASSIGNMENTS
VICE-CHAIRMAN: K-12 BUDGET EDUCATION
MEMBER: JUDICIARY
STATE BUILDING CONSTRUCTION
JOINT COMMITTEE ON RULES
AND REGULATIONS

To: Chairman Senator Elaine Bowers | Ethics, Elections & Local Government
Vice Chair Senator Steve Fitzgerald | Ethics, Elections & Local Government

Karen S. Bailey, CMC, CMCC | Chief Deputy County Clerk | Sedgwick County
P: 316-660-9230 | F: 316-383-7961 | Karen.Bailey@sedgwick.gov
525 N Main, Ste 211 | Wichita, KS 67203 | www.sedgwickcounty.org/countyclerk/

I did have conversations with our Legal Department in either 2015 or 2016 when we were reviewing the maps and noting that the city of Valley Center had annexed into Hillside Cemetery and their opinion was the cemetery boundaries did not change, based on their organization papers. If you'll need that data, please let me know and I'll have to search for that. Our GIS department has worked with us the last few years to true up our tax district boundaries and verify correct tax unit layers. We feel that is completed in this area of the county.

Representative Steve Huebert | District 90 | Sedgwick County | P: 785-296-1754
Topeka State Capitol Building | Steve.Huebert@house.ks.gov

Thank You for allowing me to address the Local Government about a situation of over lapping cemetery tax district boundaries. The attached map helps explain the issue. HB 2278 fixes this issue now and in the future.

Here is a map showing Hillside Cemetery in blue outline. Valley Center incorporated limits are in that peach color.

Sedgewick County Online Map Portal
Sedgewick County, Kansas

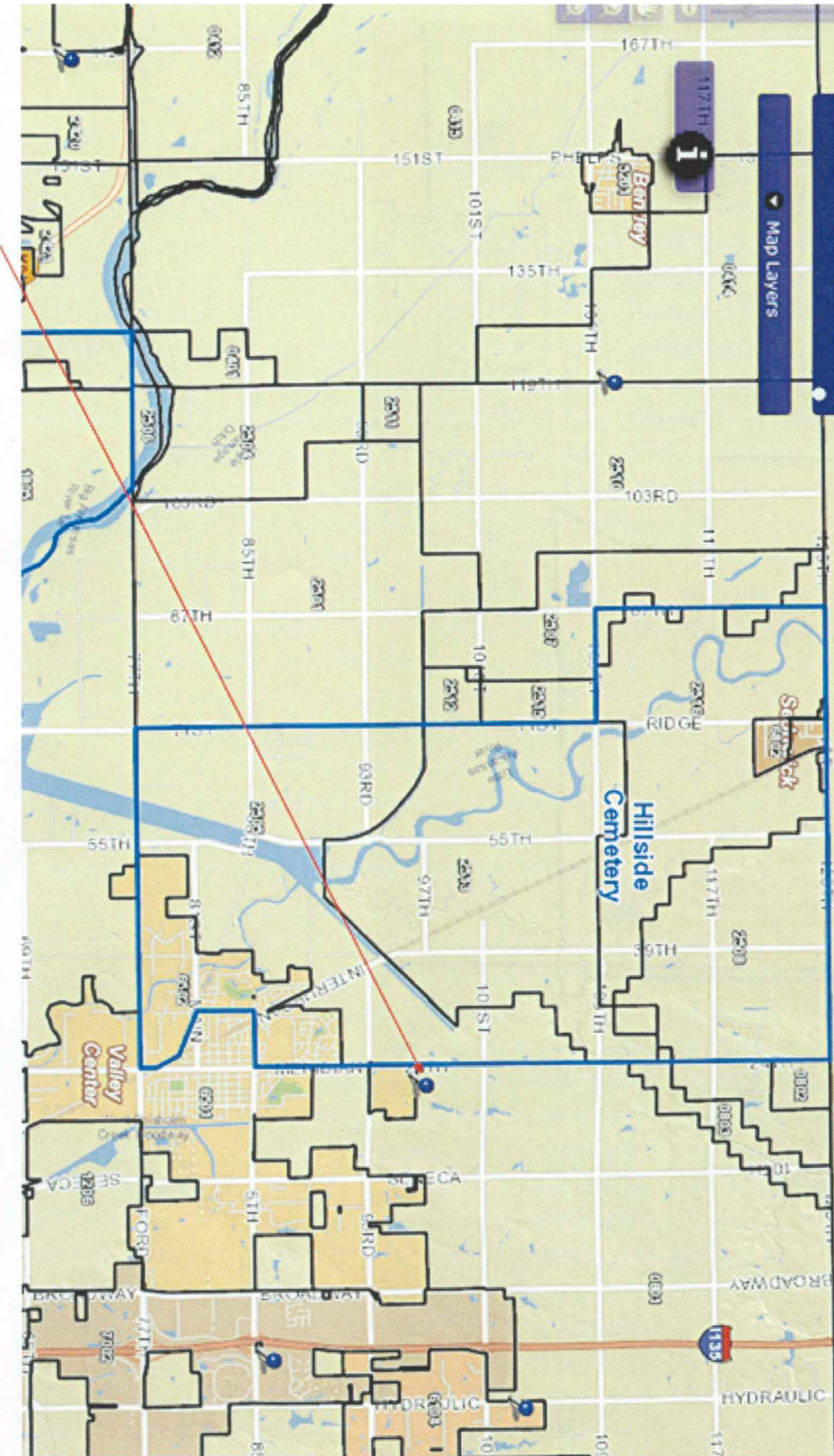
Land Records Map Zoning Map Elections Map

Basemaps

Select Aerial Year

2000 2003 2006 2008 2011 2014

Map Layers



The city owns this parcel... across from the Hillside Cemetery.

