

Ad Astra Plaza Project

Bergen's  Art LLC

October 6, 2022

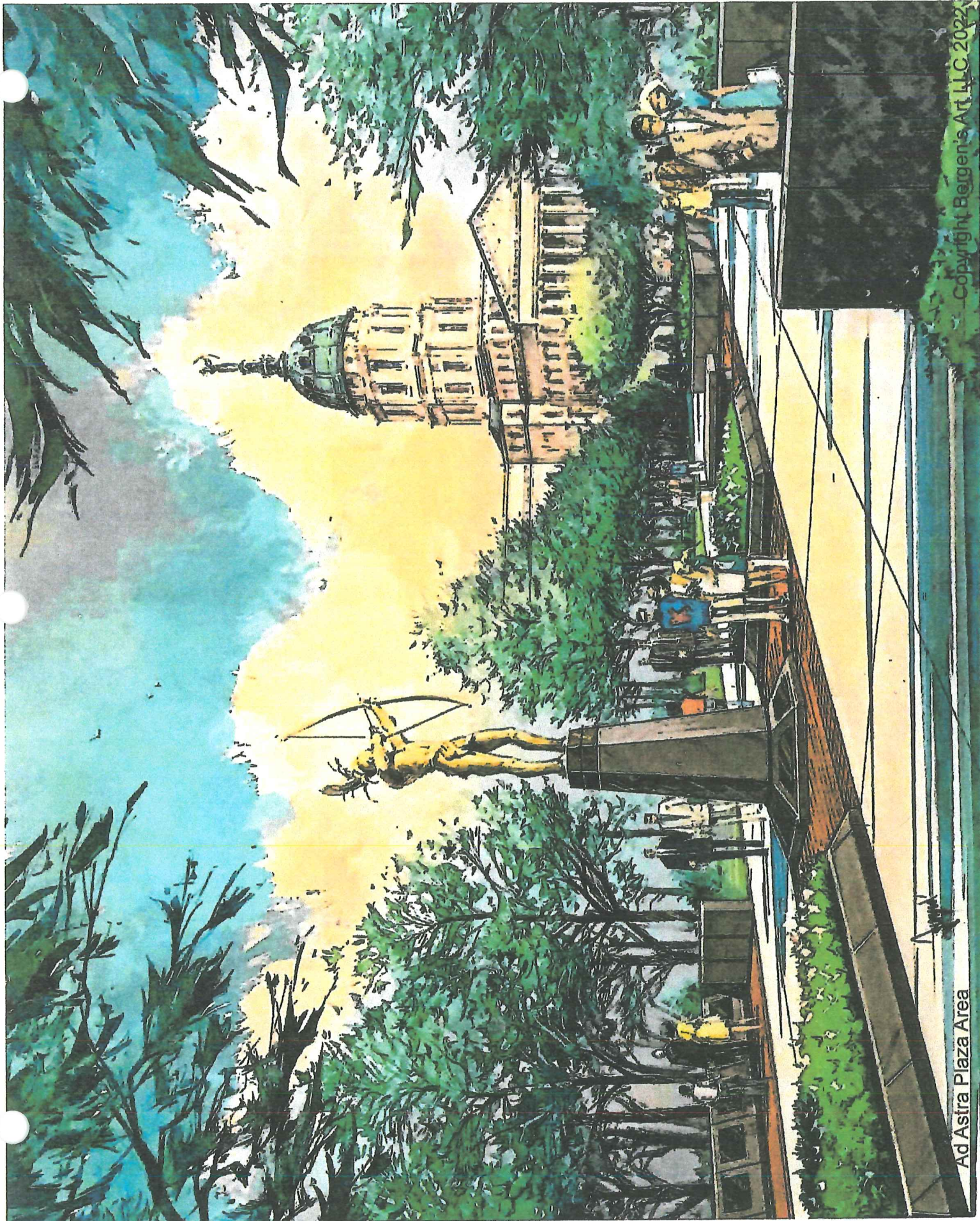


THE CAPITOL DOME SCULPTURE

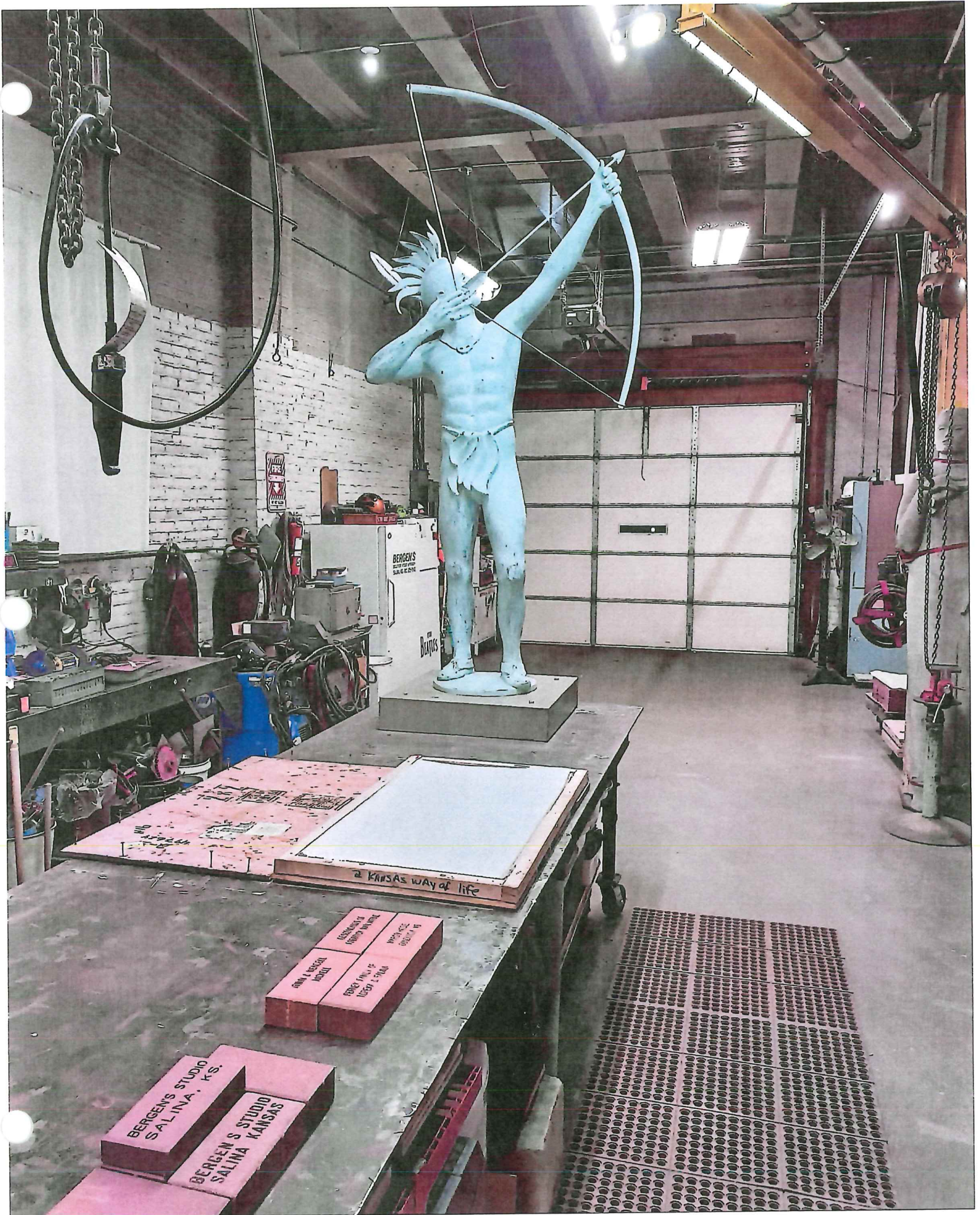
THE SYMBOLISM OF “AD ASTRA”

“Ad Astra per Aspera,” to the stars through difficulties, is the state motto and exemplifies the aspirations of the people of Kansas. The significance of this attitude has been incorporated into the development of the Capitol Dome sculpture. The students of Kansas overwhelmingly selected an Indian as the subject of the Dome sculpture. Therefore, I have chosen the figure of a Kansa Indian as the basis of my sculptural concept to represent this abstract idea visually. The sculpture, “Ad Astra,” includes historical aspects of the past, realities of the present, and dreams of the future to illustrate this spirit of Kansas.

“Ad Astra” represents the visionary and stable qualities that characterize the citizens and government of Kansas. The foundation of the state and its government is the people, represented by the Kansa Indian in “Ad Astra.” The Kansa Indians were the original people of this area. Thus, the figure in the sculpture links our past and our present. The Indian draws the bow, symbolic of the energy of Kansans, and points the arrow, the determination and resolve of the people to achieve their goals, “to the stars,” as our state motto declares. The people of Kansas strive to aim high and work hard to build a better present and future. The Indian’s aim is to the North Star, symbolic of a stable government. The North Star’s position remains constant and steady as it continues to guide our state. “Ad Astra,” to the stars, points to a strong future for Kansas.



Ad Astra Plaza Area



BERGEN'S STUDIO
SALINA, KS

BERGEN'S STUDIO
SALINA, KANSAS

BERGEN'S STUDIO
SALINA, KS

BERGEN'S STUDIO
SALINA, KS

KANSAS way of life

BERGEN'S
STUDIO
SALINA, KS



DEPARTMENT OF ADMINISTRATION

Division of Facilities Management

FP-03-2182

BILL GRAVES
Governor

JOYCE H. GLASSCOCK
Secretary of Administration

JOE FRITTON, P.E.
Director of Facilities Management
900 S.W. Jackson, Room 653
Landon State Office Building
Topeka, KS 66612-2210
(785) 296-4142
FAX (785) 296-3456
www.da.state.ks.us/fm

December 20, 2002

Dr. Richard Bergen
Bergen Sculpture Studio & Foundry
141 North Santa Fe
P.O. Box 361
Salina, Kansas 67402-0361

Re: Ad Astra Plaza on the Grounds of the Statehouse

Dear Dr. Bergen:

Although the Ad Astra has been placed on the top of the State Capitol, there is still work to be done on the Ad Astra plaza on the Statehouse grounds. It is understood that this work cannot be done until adequate funds have been raised. Since personnel may change prior to that work being completed, this letter is to clarify your rights and responsibilities for the remaining work.

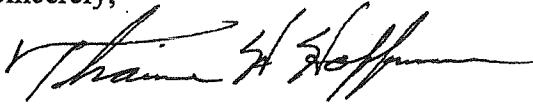
The remaining work includes the placement of the life-size Ad Astra on the existing pedestal, installation of bronze plaques on the granite pedestal and adjacent granite walls, and the removal of the existing concrete block and brick paving and installation of the inscribed bricks. It is understood that you have the right and responsibility to perform the above tasks. It is also understood that the finished work will be securely fastened or set in place, be level and true and have a finished appearance. The paving bricks are to be set in a 1/4" +/- bed of sand or thin-set mortar to allow for leveling of the exposed surface of the brick pavers. The original plans show a sealant and foam backer rod around the perimeter of the brick pavers. This is not necessary to keep out water since water can enter between the loose laid bricks. This sealant is only necessary if there is a noticeable gap between the last row of brick and the adjacent surface. If the gap is 3/8" or less, it could be filled with sand.

You are to make advanced arrangements with the Division of Facility Management, Dan Balch, at 785 296-2202 so he can arrange for the necessary safety barricades.

Dr. Richard Bergen
December 20, 2002
Page 2

For the convenience of others that may eventually read this letter, I refer to KSA 2001 Supp. 75-2256, which allows for the "Ad Astra" to be placed on the grounds of the State Capitol, but prohibits the use of public funds for that purpose.

Sincerely,

A handwritten signature in black ink, appearing to read "Thaine H. Hoffman". The signature is fluid and cursive, with a long horizontal stroke at the end.

Thaine H. Hoffman
State Architect

THH:gk

cc: Joe Fritton
Dan Balch
Barry Greis

Ad Astra Plaza Bricks

Bergen's  Art LLC

Brick Durability Standards

Our laser vitrification process was subjected to a simulated fifty-year weather resistance test. Independent Testing Laboratories, an independent company, conducted the test. Samples of our laser engraved bricks were placed in three weather climates: Freeze-thaw cycling (hot and cold), ultra violet rays (sun), and salt spray environment (snow, ice, rain). Even under the most extreme weather conditions, the laser engraved bricks will stand the test of time, ensuring that you will never need to replace your brick.

Independent Testing Laboratories - St. Louis, Missouri
Test Process Report #95-02-00405

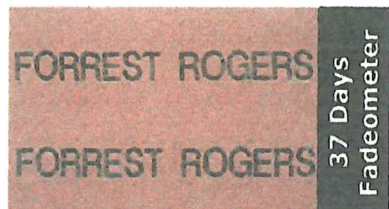
A sample of each 3 styles of brick was selectively subjected to (1) freeze-thaw cycling, (2) continuous exposure to carbon arc light in an Atlas Fade-o-meter, and (3) continuous exposure to a salt spray environment. The results of each exposure is described below:



51 Cycles
Freeze Thaw

FREEZE-THAW CYCLING

A sample of each style or shade was subjected to freeze-thaw cycling which consisted of first completely soaking the brick in water and then placed into a cold box maintained at -20F. Subsequent to a six hour exposure in the cold box, they were then transferred directly into an oven, maintained at 160F, for a 15 hour period. This cycle was repeated daily with the exception that the heat cycle was continued over the weekend. The freeze-thaw cycle was repeated 51 times in the course of the exposure. It was noted that no visual change in the appearance of the engraving was detected in the bricks when compared to the control samples.



37 Days
Fadeometer

CARBON ARC EXPOSURE

A specimen of each style brick with laser engraving was subjected to direct ultra violet light exposure generated by a carbon arc in an Atlas Fade-o-meter. This stimulated exposure to direct sunlight similar to that experienced at high noon at the equator. The bricks were oriented in the chamber with the engraved surface facing the arc at a distance of 12 inches. The bricks were continually subjected to the carbon arc light for a 37 day period. No visual change in the appearance of the laser engraving was noted in any of the bricks following this exposure.



63 Days
Salt Spray

SALT SPRAY EXPOSURE

One specimen of each style of engraved brick was subjected to a salt spray cabinet exposure for a period of nine weeks (63 days). Upon removal from the cabinet, the bricks were rinsed in water and examined. Visual inspection at the conclusion of the exposure period revealed no change in the appearance of the surface etchings as compared to that of the control samples.

EVALUATION OF RESULTS

Based on the text results obtained in the course of this examination, it is our opinion that the engravings produced in the surfaces of the three styles of bricks submitted, were all comparable and were all resistant to the environmental extremes created during the test exposure. The laser engravings appeared quite durable and resistant to weathering under the conditions of testing.

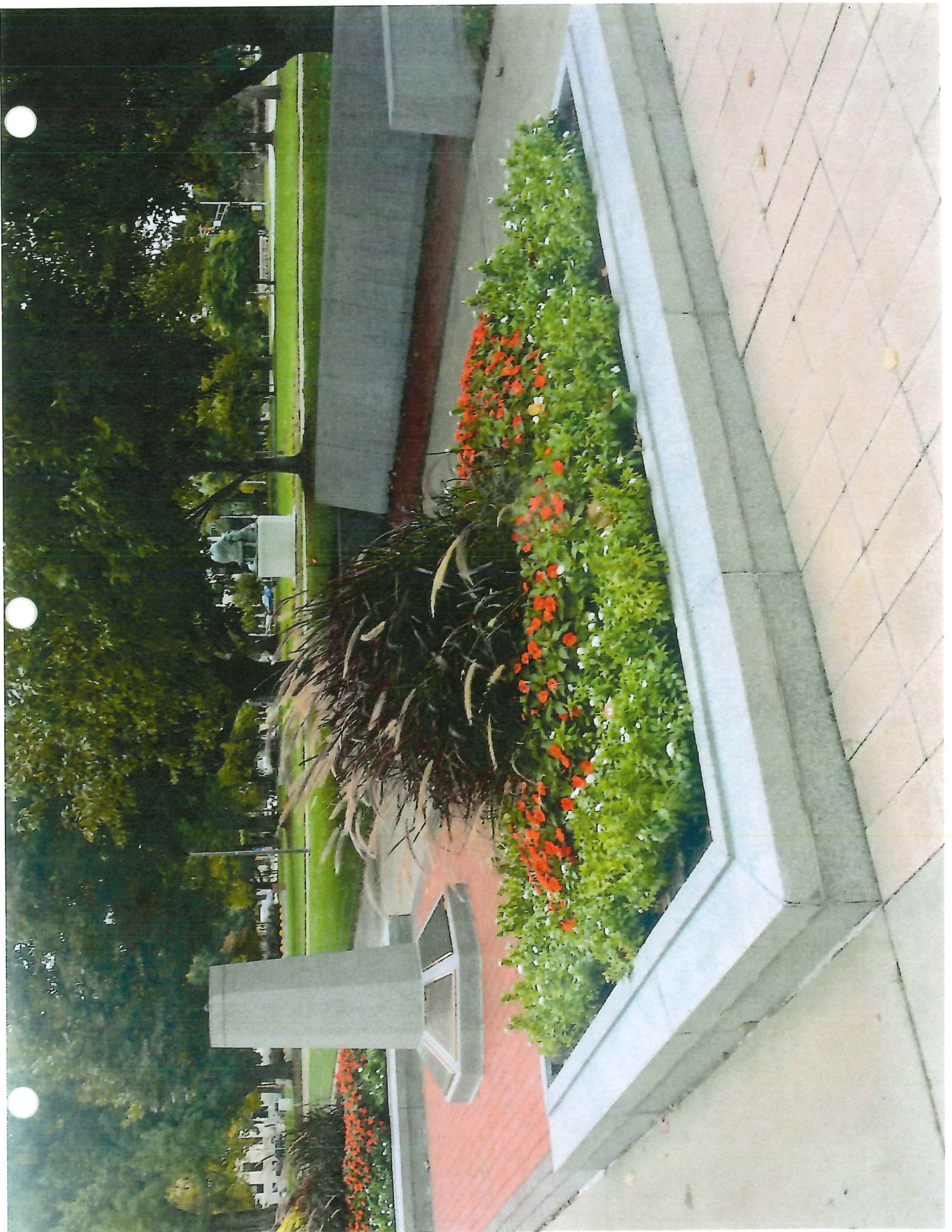


JAMES MONROE
The first President of the United States, James Monroe, was born in Westmoreland County, Virginia, on September 28, 1758. He served as the fifth President of the United States from 1817 to 1825. He is best known for the Monroe Doctrine, which declared that the United States would oppose any European colonialism in the Americas.

THE CAPITOL BUILDING
The United States Capitol building in Washington, D.C., is the seat of the United States Congress. It was designed by James Hoban and built between 1800 and 1857. The building is a neoclassical structure and is one of the most prominent landmarks in the city. It has a long history and has been the site of many important events in American history.

KANSAS HISTORY
The state of Kansas has a rich and diverse history. It was first explored by French and Spanish explorers in the 16th century. It became a territory in 1804 and a state in 1861. Kansas is known for its prairie landscape, its role in the American Civil War, and its contribution to the American West.

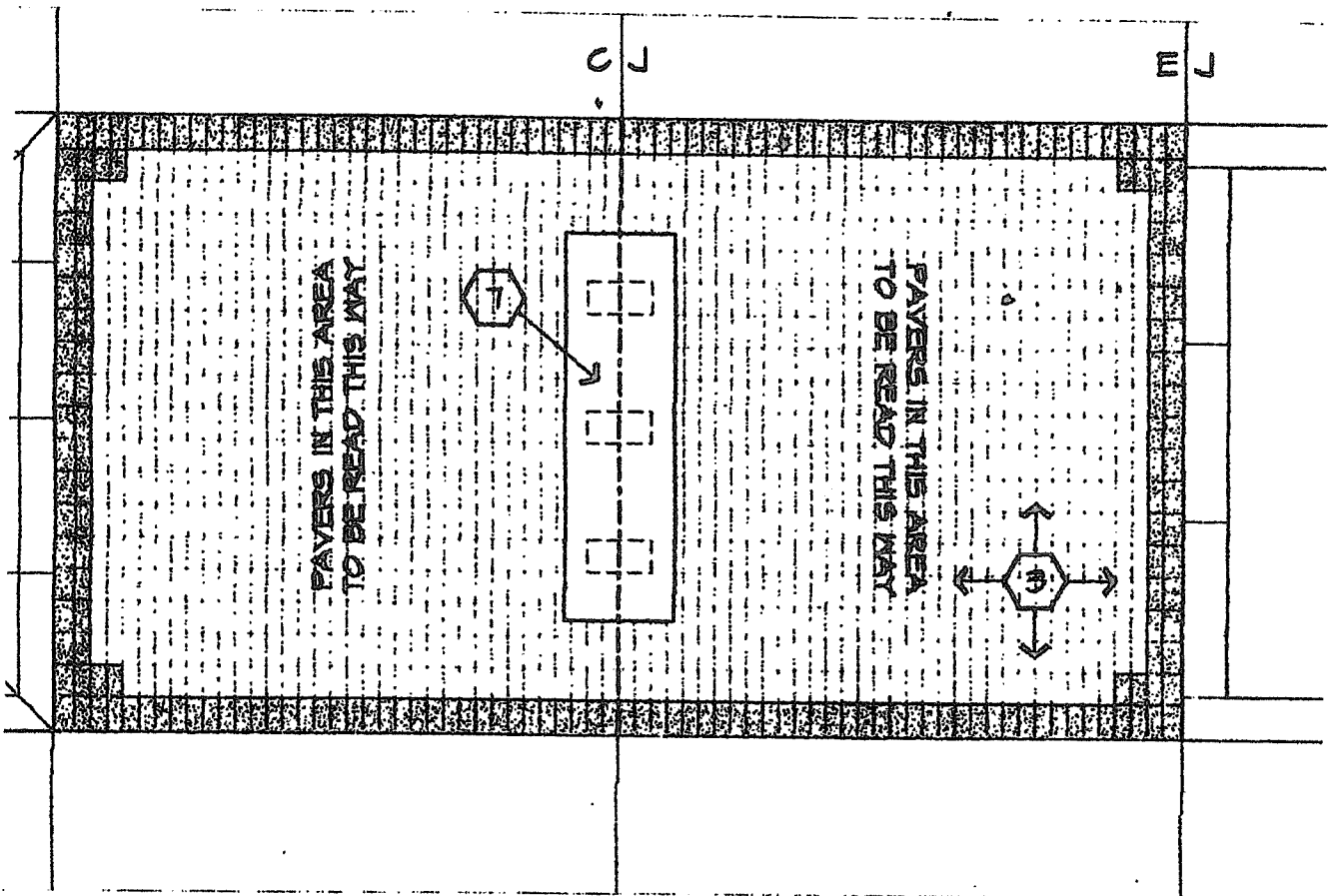


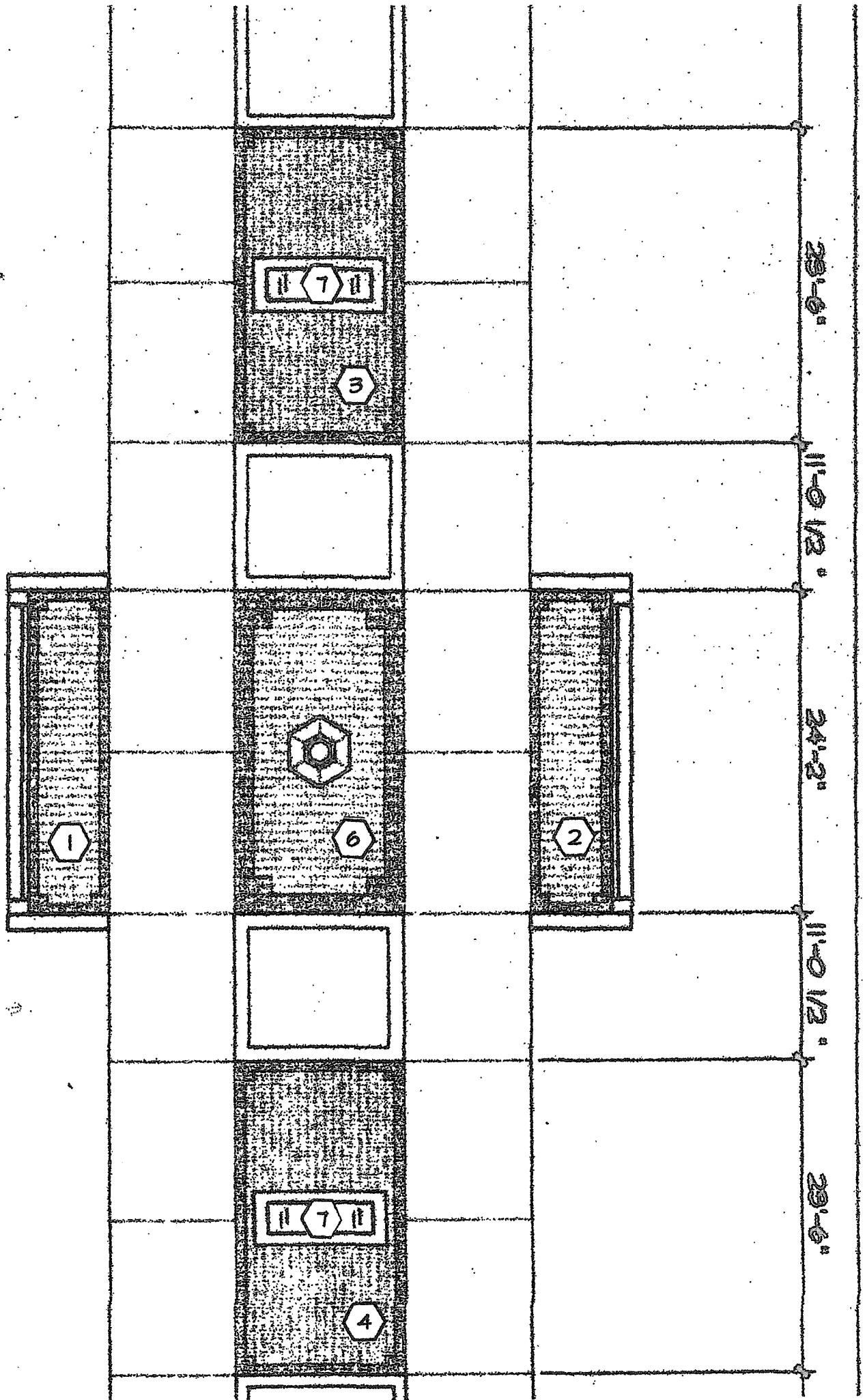


BETHANY COLLEGE

ALTERNATE NOTES:

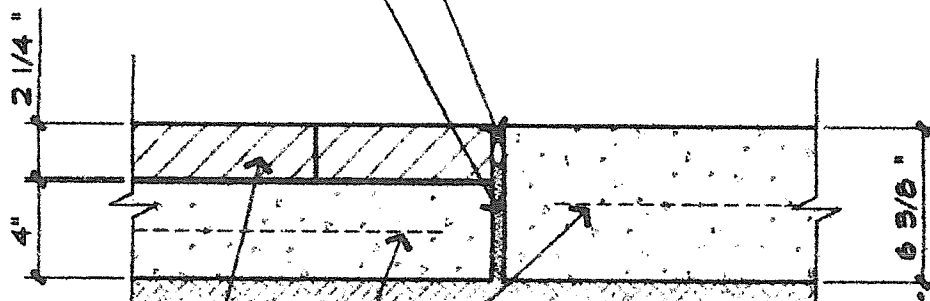
- ① ALTERNATE NO. 1: INSTALLATION OF OWNER SUPPLIED NAMED BRICK PAVERS (COLOR NO. 1) AND BORDER BRICK PAVERS (COLOR NO. 2) IN NORTH DONOR RECOGNITION AREA IN LIEU OF CONCRETE PATIO PAVERS.
- ② ALTERNATE NO. 2: INSTALLATION OF OWNER SUPPLIED NAMED BRICK PAVERS (COLOR NO. 1) AND BORDER BRICK PAVERS (COLOR NO. 2) IN SOUTH DONOR RECOGNITION AREA IN LIEU OF CONCRETE PATIO PAVERS.
- ③ ALTERNATE NO. 3: INSTALLATION OF OWNER SUPPLIED NAMED BRICK PAVERS (COLOR NO. 1) AND BORDER BRICK PAVERS (COLOR NO. 2) IN EAST DONOR RECOGNITION AREA IN LIEU OF CONCRETE PATIO PAVERS.
- ④ ALTERNATE NO. 4: INSTALLATION OF OWNER SUPPLIED NAMED BRICK PAVERS (COLOR NO. 1) AND BORDER BRICK PAVERS (COLOR NO. 2) IN WEST DONOR RECOGNITION AREA IN LIEU OF CONCRETE PATIO PAVERS.
- ⑤ SIX (6) BRONZE PLAQUES FURNISHED BY OTHERS, INSTALLED BY CONTRACTOR.
- ⑥ ALL BRICK THIS AREA SUPPLIED BY OTHERS INSTALLED BY CONSTRUCTOR - BASE BID.
- ⑦ GRANITE BENCH - BASE BID
- ⑧ BRONZE PLAQUES (NIC)





SEALANT & BACKER ROD

COMPRESSIBLE FILLER



BRICK PAVERS

CONCRETE SLAB REINF.
WWF 4x4xW2.9xW2.9

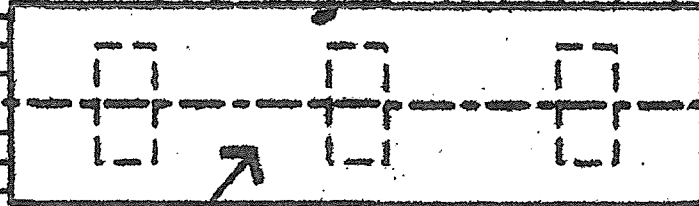
COMPACTED EARTH

4

PAVER EDGE @ SIDEWALK

SCALE: 1 1/2" = 1'-0"

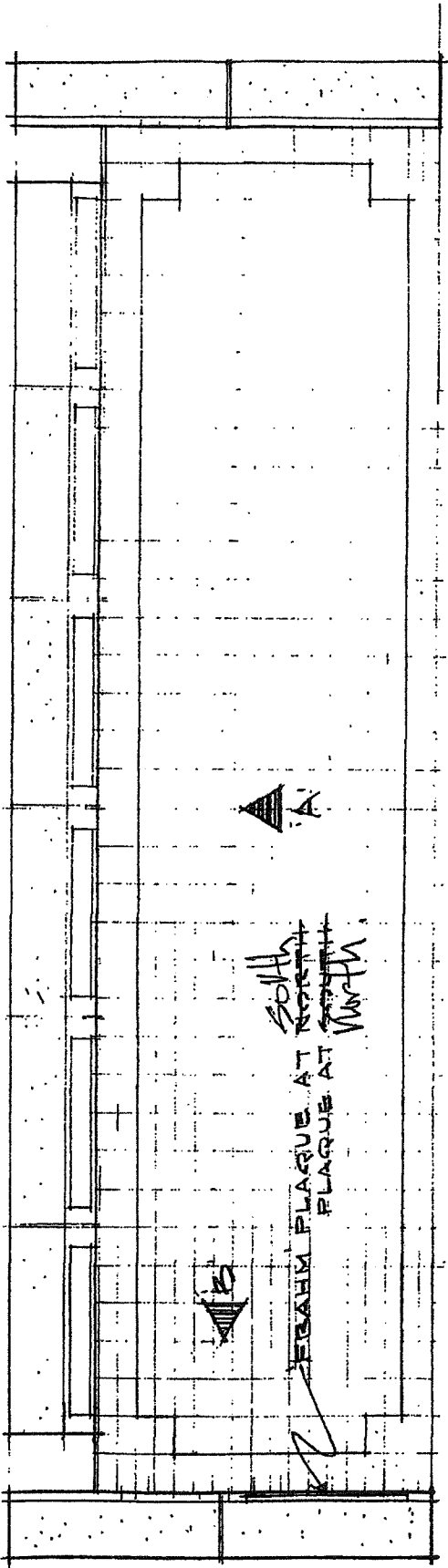
PAVERS IN THIS AREA
TO BE READ THIS WAY



PAVERS IN THIS AREA
TO BE READ THIS WAY

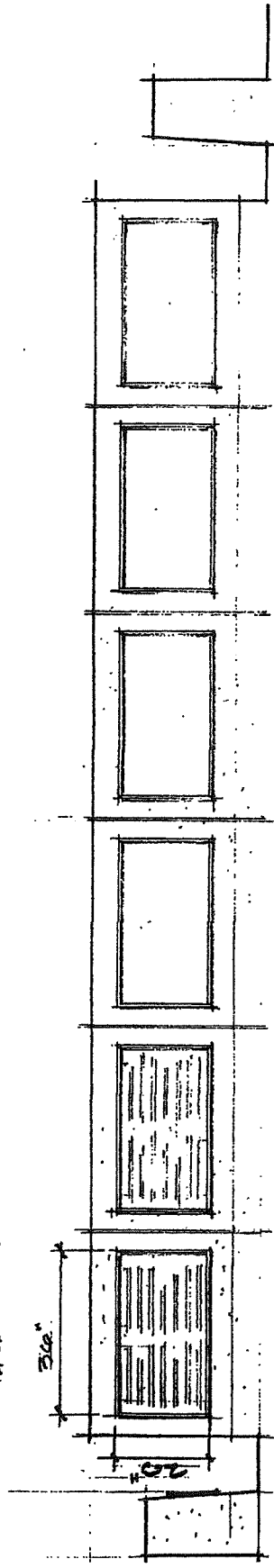
Ad Astra Plaza Bronze Plaques

Bergen's  Art LLC



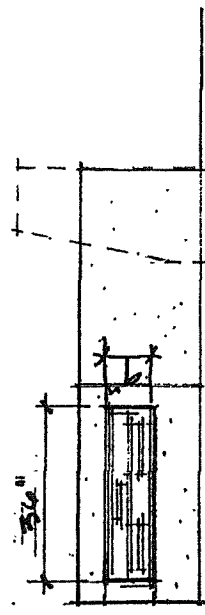
PLAN - NORTH WALL & PAVED AREA - SOUTH SAME

3/8" = 1'-0"



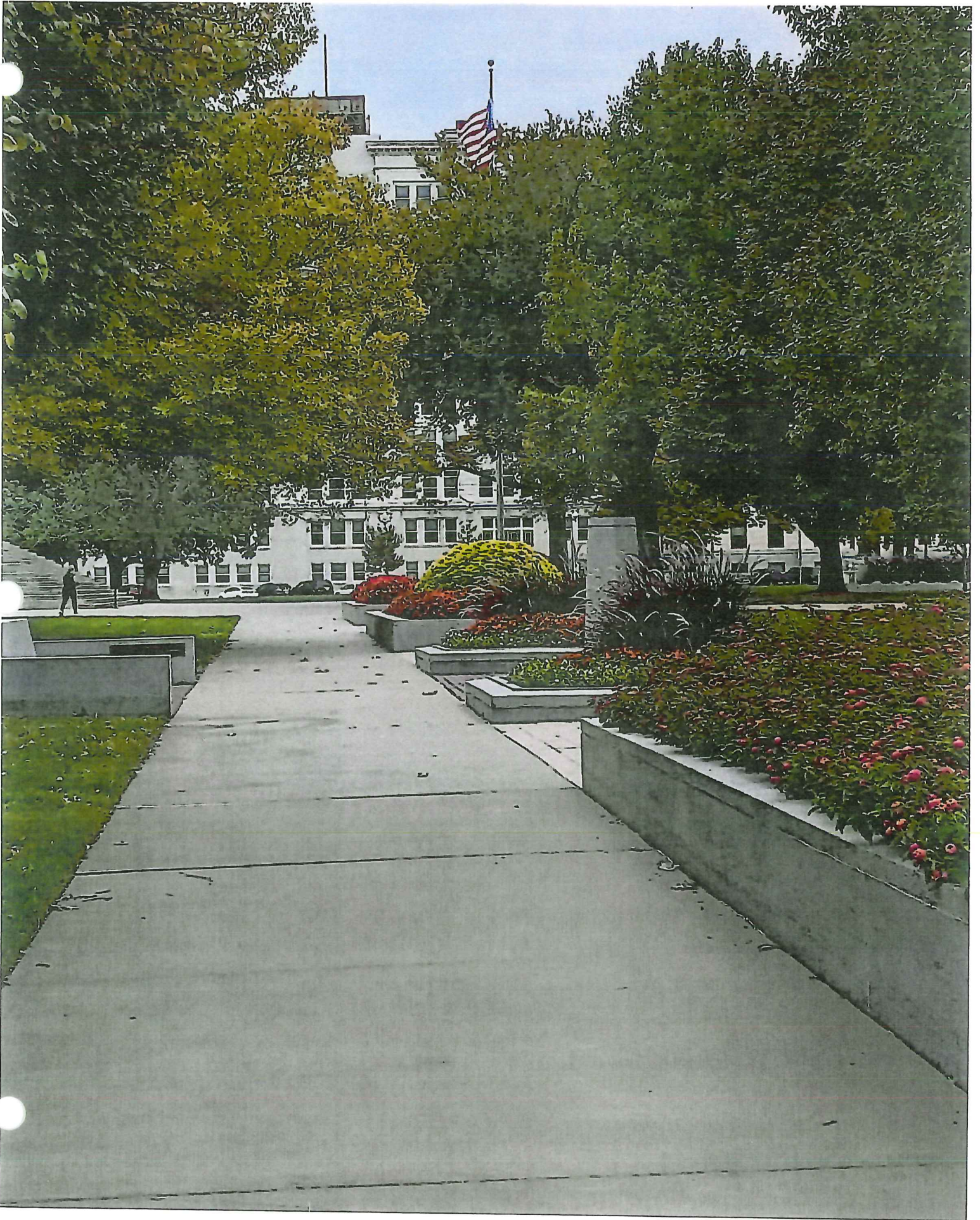
A ELEVATION OF NORTH WALL - SOUTH SAME

3/8" = 1'-0"



B END WALL ELEVATION - FRAHMI PLAQUE

3/8" = 1'-0"



2. THE KANSA WAY OF LIFE

AS THE KANSAS MIGRATED WESTWARD, THEIR STYLE OF LODGING CHANGED FROM TIMBER BASED TO SOD BASED- REPEATED RELOCATION OF CORE VILLAGES AS WELL AS THE INDISCRIMINATE TIMBER CUTTING PRACTICES OF WHITE SQUATTERS ULTIMATELY FORCED THE KANSAS TO RELY EXCLUSIVELY ON SOD AS THEIR PRIMARY BUILDING MATERIAL.

KANSA VILLAGES COMBINED SMALL CONICAL HUTS AND LARGER RECTANGULAR LODGES. THE LODGES MEASURED SIXTY FEET LONG BY TWENTY-FIVE FEET WIDE, EACH LODGE ACCOMMODATING THREE TO FIVE FAMILIES. THE LODGES AFFORDED LITTLE OR NO FAMILY PRIVACY, A SITUATION WHICH DISMAYED MANY A WHITE VISITOR.

THE POLITICAL ARRANGEMENT OF KANSA SOCIETY CENTERED AROUND A NUMBER OF SEPARATE VILLAGES. THE COMMON PRACTICE WAS FOR EACH VILLAGE TO HAVE ITS OWN HEAD CHIEF, ALTHOUGH A PARTICULARLY CAPABLE LEADER MIGHT ENJOY FOR A LIMITED TIME THE POSITION OF PRINCIPAL CHIEF OVER ALL THE VILLAGES. TRADITIONALLY, CHIEFS WERE SELECTED ON THE BASIS OF WISDOM, BRAVERY, AND DISTINGUISHED ACTS. HOWEVER, REFLECTING THE INFLUENCE OF WHITE CULTURE, THE POSITION OF VILLAGE CHIEF EVENTUALLY BECAME MAINLY HEREDITARY.

THE KANSA SOCIAL STRUCTURE CONSISTED OF TWO HALF-TRIBES (KEEPERS OF THE PIPE AND WIND PEOPLE), WHICH WERE IN TURN DIVIDED INTO AT LEAST SEVEN OR EIGHT GENTES, WHICH WERE FURTHER DIVIDED INTO THE VARIOUS FAMILY UNITS. FAMILY EMPHASIS WAS STRONG AMONG THE KANSAS, AND FAMILY STRUCTURE WAS PATRIARCHAL.

KANSA MALES AND FEMALES HAD CLEARLY DEMARCATED ROLES. BOYS WERE ENCOURAGED TO BE HEADSTRONG AND WILLFUL, AS THESE QUALITIES WERE BELIEVED CRUCIAL FOR THEIR MATURING INTO BRAVE HUNTERS AND WARRIORS. GIRLS, ON THE OTHER HAND, WERE EXPECTED TO ACCEPT THEIR ROLE AS DOMESTIC SERVANTS. KANSA WOMEN PERFORMED MOST OF THE MANUAL LABOR ABOUT THE VILLAGE, AND KANSA GIRLS WERE TRAINED TO WORK HARD AT AN EARLY AGE. EVEN SEASONED MILITARY OFFICERS, ACCUSTOMED TO THE RIGORS OF FRONTIER TRAVEL, WERE ASTONISHED AT THE HUNDRED-POUND LOADS CARRIED UP TO THREE LEAGUES (ABOUT NINE MILES) AT A TIME BY TEN- TO TWELVE-YEAR-OLD GIRLS.

THE APPEARANCE OF KANSA MEN INSPIRED FAVORABLE COMMENT AMONG WHITE TRAVELERS. IN 1802, A FRENCH ARISTOCRAT DESCRIBED

KANSA MALES AS "TALL, HANDSOME, VIGOROUS, AND BRAVE." TRAVELERS WERE PARTICULARLY IMPRESSED BY THE HAIR PLUCKING SCRUPULOUSLY PRACTICED BY CHIEFS AND WARRIORS. USING A WIRE APPARATUS, KANSA MEN CAREFULLY PLUCKED THEIR ARMS, CHINS, EYEBROWS, AND MOST OF THE SCALP, LEAVING ONLY A NARROW STRIP OF HAIR ON THE TOP AND BACK OF THE HEAD. THE STRIP WAS SOMETIMES COLORED WITH VERMILION OR DECORATED WITH THE TAIL FEATHER OF A WAR EAGLE.

DURING THE COURSE OF THE NINETEENTH CENTURY, AS THE RESULT OF A NUMBER OF FACTORS--INCLUDING DESTRUCTION OF THE BUFFALO HERDS, PRESSURE FROM MERCHANTS AND TRADERS, AND THE INTRODUCTION OF SMALLPOX AND CHOLERA--THE KANSA WAY OF LIFE,

INDEED, KANSA SURVIVAL, BECAME INCREASINGLY PRECARIOUS. THE TRIBE NUMBERED ABOUT 1,565 IN 1806. BY 1873, THE TRIBE

NUMBERED ONLY ABOUT 600. CLEARLY, THE LONG-RANGE TREND APPEARED TO BE ONE OF EVENTUAL OBLITERATION. AS LATE AS 1855,

EVEN IN THE MIDST OF THE INCREASING DISPOSSESSION AND IMPOVERISHMENT OF THE KANSA TRIBE, THE CARRIAGE OF A TYPICAL KANSA WARRIOR WAS DESCRIBED AS "ERECT, DIGNIFIED, AND PROUD; SOMETIMES EVEN SCORNFUL."

THIS PLAQUE DONATED BY HAUPTLI FOUNDATION

2. THE KANSA WAY OF LIFE

STYLE OF LODGING CHANGED FROM TIMBER BASED TO TIMBER-CUTTING PRACTICES OF WHITE SQUATS ONLY ON SOD AS THEIR PRIMARY BUILDING MATERIALS.

HUTS AND LARGER RECTANGULAR LODGES. THE ACCOMMODATING THREE TO FIVE FAMILIES. THE LODGES SITUATION WHICH DISMAYED MANY A WHITE VISITOR.

CENTERED AROUND A NUMBER OF SEPARATE VILLAGES. THOUGH A PARTICULARLY CAPABLE LEADER MIGHT BE CHOSEN ADDITIONALLY, CHIEFS WERE SELECTED ON THE BASIS OF ABILITY. WHITE CULTURE, THE POSITION OF VILLAGE CHIEFS.

TWO HALF-TRIBES (KEEPERS OF THE PIPE AND WARRIORS) WHICH WERE FURTHER DIVIDED INTO THE VARIOUS FAMILIES.

THE KANSA TRIBE

THE KANSA TRIBE INHABITED THE KANSAS RIVER VALLEY, WHERE IT WAS FIRST ENCOUNTERED BY EUROPEAN TRADERS IN THE EARLY 18TH CENTURY. CENTERED AROUND A NUMBER OF VILLAGES, KANSA SOCIETY POSSESSED A CLEARLY DEMARCATED SOCIAL STRUCTURE AND RIGID GENDER ROLES. THE ECONOMY CENTERED ON CULTIVATION OF CORN, BEANS, PUMPKINS, AND THE SUMMER AND FALL BUFFALO HUNTS. TRADE MANIPULATIONS BY EUROPEANS LED TO THE IMPOVERISHMENT OF THE TRIBE IN THE EARLY 19TH CENTURY. IN 1844, THE FEDERAL GOVERNMENT RELOCATED THE KANSA TO THE UPPER NEOSHO VALLEY NEAR COUNCIL GROVE. HOWEVER, WHITE SQUATTERS TOOK OVER THIS AREA IN THE 1850'S. IN 1863, CONGRESS AUTHORIZED REMOVAL OF ALL INDIANS FROM KANSAS. THE KANSA TRIBE WAS RELOCATED TO OKLAHOMA IN 1873.

THIS PLAQUE DONATED BY ANDERSON FAMILY FOUNDATION







Ad Astra Plaza Bronze Sculpture

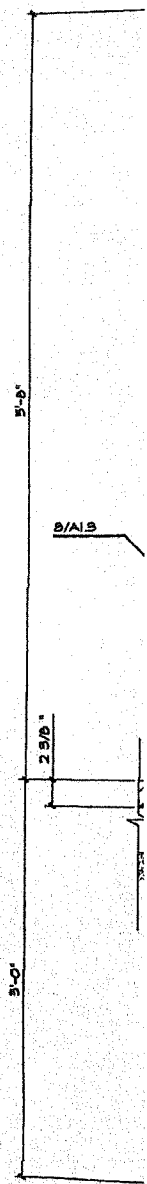
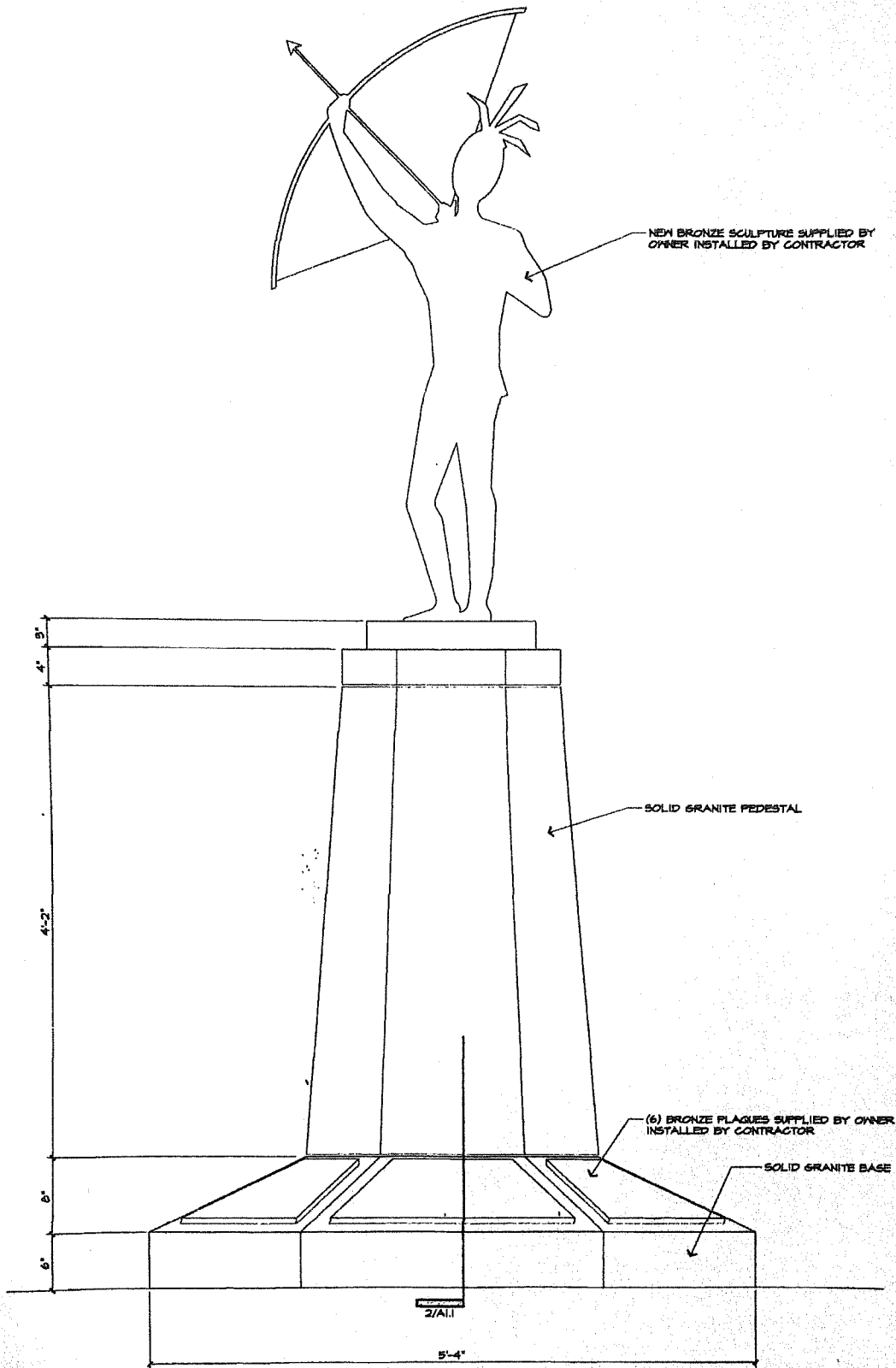
Bergen's  Art LLC



1800
The first building on the site was the Old State House, which was destroyed by fire in 1780. The current building was designed by Thomas Worthington and completed in 1800.

THE CAPITOL BUILDING
The Capitol Building is a masterpiece of Greek Revival architecture. It was designed by Thomas Worthington and completed in 1800. The building is a prime example of the early American architectural style.

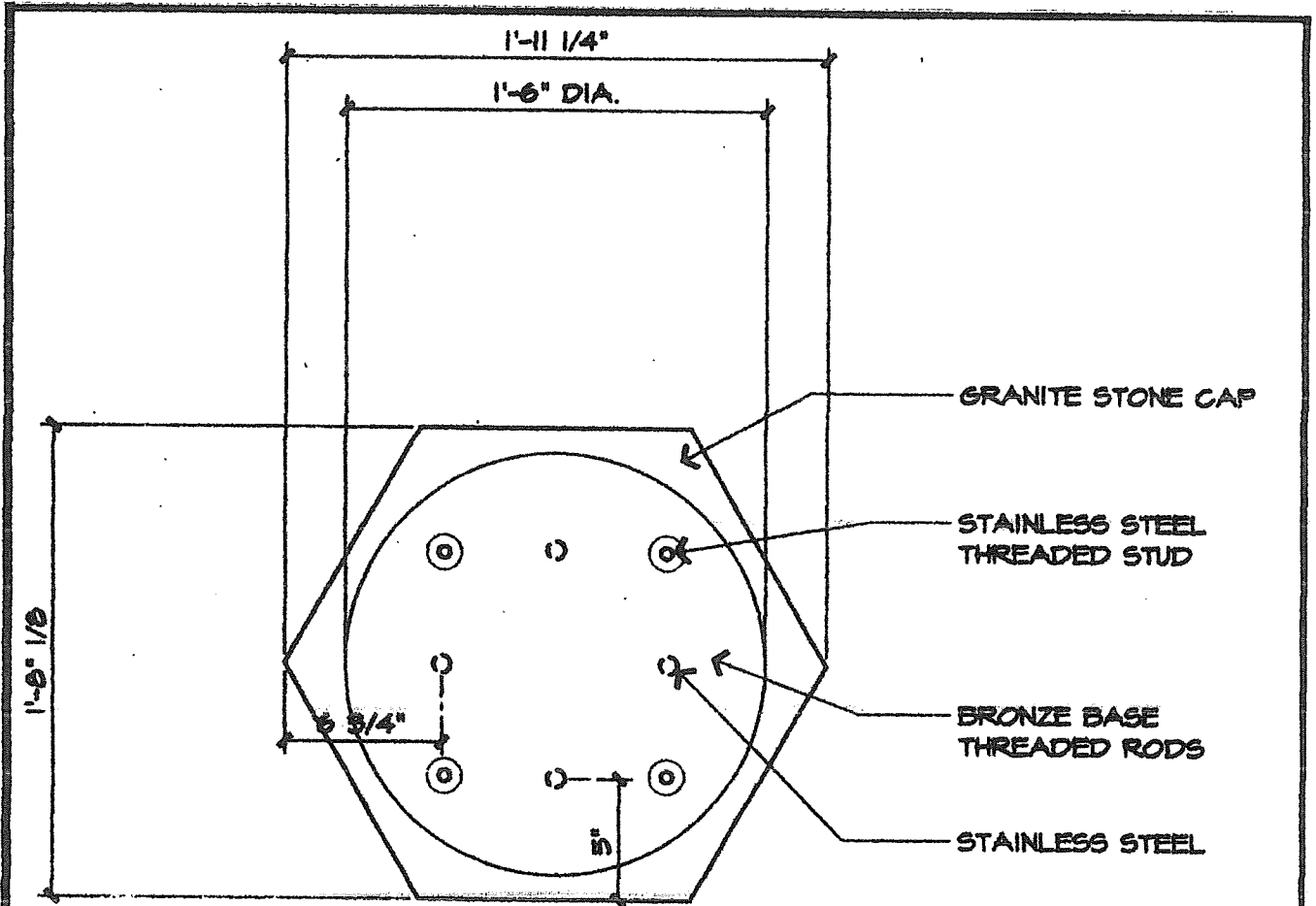
1856
The building was expanded in 1856 to accommodate the growing number of legislators. The expansion was designed by the same architect as the original building.



NOTE: VERIFY ORIENTATION OF PEDESTAL, BASE, AND SCULPTURE WITH STATEHOUSE ARCHITECT PRIOR TO SETTING ON CONCRETE FOUNDATION.

1 PEDESTAL ELEVATION
SCALE: 1/2"=1'-0"

2 PEDESTAL
SCALE: 1/2"=1'-0"



NOTE: FIELD VERIFY AND DRILL HOLES IN GRANITE CAP STONE FOR ANCHOR RODS.

5

PLAN OF PEDESTAL CAP

SCALE: 1 1/2"=1'-0"





320 N. Santa Fe
Salina, Kansas 67401
785-201-2285
March 24, 2022

AD ASTRA PLAZA COST ESTIMATE:

- **Ad Astra Bronze Sculpture**
 - Artist responsibility includes providing cast life-size (8'2") bronze replica of the Ad Astra Kansas Capitol Dome sculpture - transporting sculpture to installation site; mounting hardware; and oversight of lifting and securing sculpture to the existing pedestal

\$102,500.00
- **Bronze Plaques - Design, fabricate, transport and oversee installation**
 - 12 - bronze plaques 8 displaying the history of the Kansa Tribe, with assigned sponsorship (three are currently cast) the Artists Statement, Chronicle of the Ad Astra Project and two plaques reserved for Major Donor recognition (to be installed on plaza wall structures)
 - 8 - bronze donor recognition plaques with assigned sponsorships for the four planters
 - 2 - Ad Astra Plaza entrance plaques assigned to large area entrance planters

Estimated cost for the 19 bronze plaques to complete the Ad Astra Plaza \$54,242.00
- **Plaza Bricks**
 - Provide boarder bricks, filler bricks and completed sponsor engraved bricks for plaza completion (all bricks have been fabricated, including the sponsor engraved bricks and are currently being stored at the studio)
 - Provide oversight of brick installation per Plaza layout design

\$2,500.00

Bergen's Art LLC

**** Estimated Total Cost \$159,242.00**

PAYMENT SCHEDULE: 50% to Start 50% Completion

Prices are good for 90 days from March 24, 2022

Artist retains all copyrights

NOT INCLUDED IN COST ESTIMATE:

- Removal and disposal of temporary pavers
- Installation of bronze plaques and plaza bricks, including sponsor engraved bricks
- Transportation of plaza bricks from Bergen's Art LLC, Salina, KS to installation site, Topeka, KS
- Equipment to lift and install sculpture on existing pedestal

***plus sales tax - unless a Tax-Exempt Certificate is provided at the time of purchase.*