

Children's Initiatives Fund

FY 2011 - FY 2013

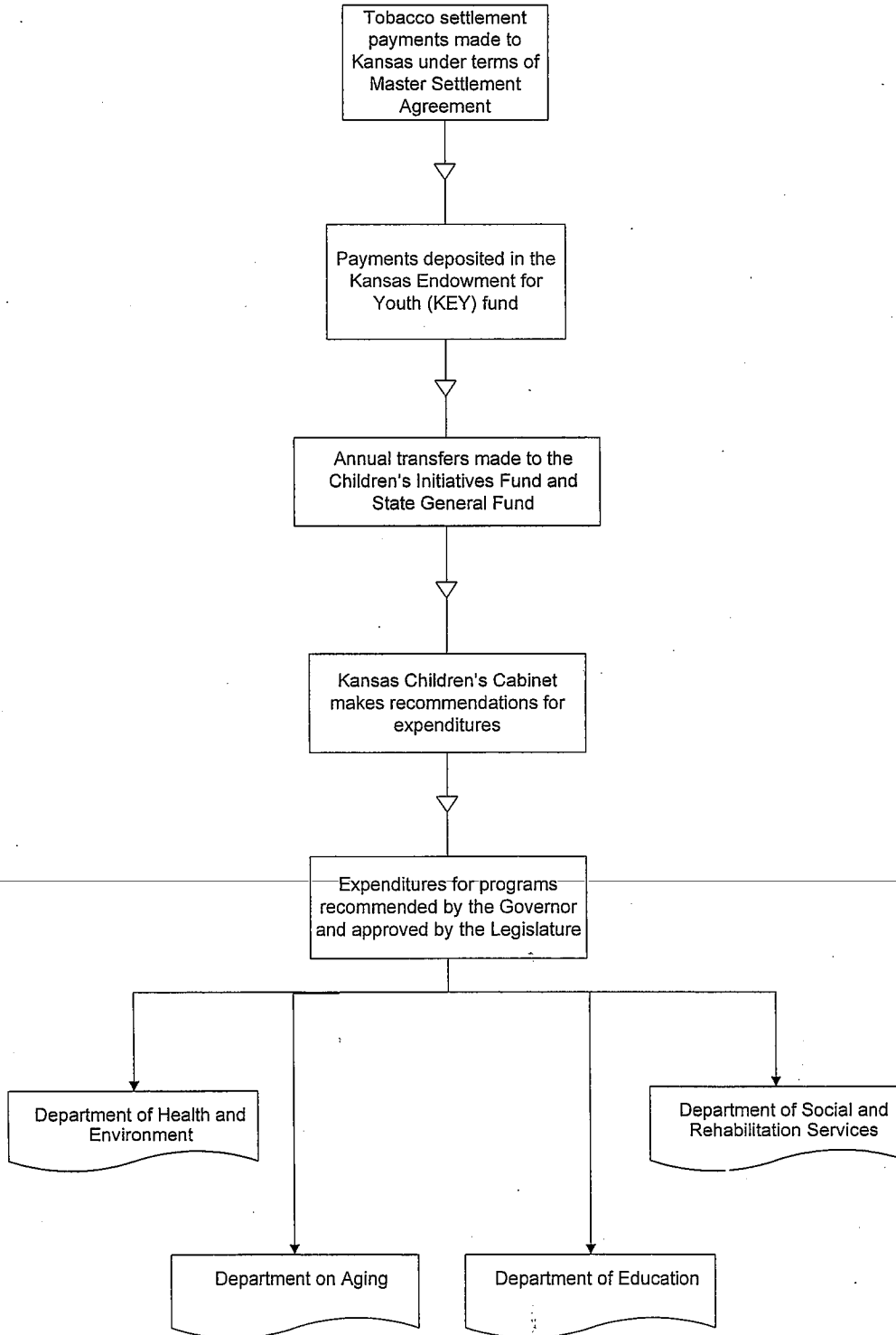
	Actual FY 2011	Legislative Approved FY 2012	Gov. Rec. FY 2012	Gov. Rec. FY 2013
Department of Health and Environment				
Healthy Start/Home Visitor	\$ 250,000	\$ 237,914	\$ 237,914	\$ 237,914
Infants and Toddlers Program (Tiny K)	5,700,000	5,700,000	5,700,000	5,700,000
Smoking Cessation/Prevention Program Grants	998,040	1,000,000	1,001,960	1,000,000
Newborn Hearing Aid Loaner Program	49,989	47,161	47,945	47,161
SIDS Network Grant	75,000	71,374	71,374	71,374
Newborn Screening	2,186,528	2,108,806	2,137,185	2,137,185
Subtotal - KDHE	<u>\$ 9,259,557</u>	<u>\$ 9,165,255</u>	<u>\$ 9,196,378</u>	<u>\$ 9,193,634</u>
Department on Aging				
Children's Mental Health Initiative	\$ -	\$ -	\$ -	\$ 2,635,210
Department of Social and Rehabilitation Services				
Children's Cabinet Accountability Fund	\$ 249,436	\$ 519,325	\$ 519,325	\$ 360,140
Children's Mental Health Initiative	3,800,000	3,800,000	3,800,000	-
Family Centered System of Care	4,849,998	4,750,000	4,750,000	-
Child Care Services	1,399,787	5,033,679	5,033,679	3,407,904
Reading Roadmap	-	933,137	933,137	910,994
Smart Start Kansas - Children's Cabinet	8,318,582	7,158,744	7,158,744	4,964,419
Family Preservation	3,241,062	3,106,605	3,106,605	1,500,000
Early Childhood Block Grants	10,023,219	10,567,102	10,567,102	7,484,736
Early Childhood Block Grants - Autism	50,000	48,179	48,179	47,036
Early Head Start	3,452,626	66,584	66,584	66,584
Child Care Quality Initiative	500,000	66,584	479,257	332,353
Subtotal - SRS	<u>\$ 35,884,710</u>	<u>\$ 36,049,939</u>	<u>\$ 36,462,612</u>	<u>\$ 19,074,166</u>
Department of Education				
Parents as Teachers	\$ 7,359,130	\$ 7,237,635	\$ 7,237,635	\$ 5,023,541
Pre-K Pilot	4,880,000	4,799,812	4,799,812	3,323,750
Subtotal - Dept. of Ed.	<u>\$ 12,239,130</u>	<u>\$ 12,037,447</u>	<u>\$ 12,037,447</u>	<u>\$ 8,347,291</u>
TOTAL	<u>\$ 57,383,397</u>	<u>\$ 57,252,641</u>	<u>\$ 57,696,437</u>	<u>\$ 39,250,301</u>

	Actual FY 2011	Legislative Approved FY 2012	Gov. Rec. FY 2012	Gov. Rec. FY 2013
Beginning Balance	\$ (6,200,707)	\$ (4,448,052)	\$ (4,448,052)	\$ -
Plus: Other Income*	37,917	-	-	-
State General Fund Transfer	-	6,700,000	6,700,000	-
Children's Initiatives Reserve Fund	1,194,152	-	-	-
KEY Fund Transfer In	57,905,446	54,611,593	55,444,489	39,250,301
Total Available	<u>\$ 52,936,808</u>	<u>\$ 56,863,541</u>	<u>\$ 57,696,437</u>	<u>\$ 39,250,301</u>
Less: Expenditures	57,383,397	57,252,641	57,696,437	39,250,301
Transfer Out to State General Fund	1,463	-	-	-
ENDING BALANCE	<u>\$ (4,448,052)</u>	<u>\$ (389,100)</u>	<u>\$ -</u>	<u>\$ -</u>

* Other Income includes released encumbrances, recoveries and reimbursements.

Staff Note: The Governor's recommendation for FY 2012 transfers \$485,593 from the Kansas Endowment for Youth Fund to the Attorney General. The Governor's recommendation for FY 2013 recommends a transfer from the KEY fund to the Attorney General of \$485,593.

Flow of Tobacco Settlement Dollars in Kansas



Kansas Endowment for Youth (KEY) Fund Summary

	Actual FY 2003	Actual FY 2004	Actual FY 2005	Actual FY 2006	Actual FY 2007	Actual FY 2008	Actual FY 2009	Actual FY 2010	Actuals FY 2011	Approved FY 2012	GBR FY 2012	GBR FY 2013
Beginning Balance	\$ 7,814,894	\$ -	\$ 42,981	\$ 512,837	\$ 208,555	\$ 4,635,676	\$ 8,457,177	\$ 16,738,905	\$ 2,743,603	\$ 47,196	\$ 47,196	\$ 261
Released Encumbrances	-	-	-	9,574	100	9,355	223	11,399	76	-	-	-
Tobacco Receipts	61,511,858	52,531,729	53,453,764	49,463,392	51,977,584	52,755,628	57,907,900	47,777,541	45,187,971	43,800,000	44,144,893	28,000,000
Strategic Contributions Funds	-	-	-	375,957	-	14,680,000	15,043,960	13,060,924	11,903,041	12,000,000	12,000,000	12,000,000
Transfer to Children's Initiatives Fund	(45,000,000)	(42,588,748)	(51,135,585)	(49,514,213)	(47,361,933)	(62,922,205)	(64,458,892)	(60,119,242)	(59,099,598)	(54,611,593)	(55,444,489)	(39,250,301)
Transfer to State General Fund	(24,326,752)	(9,900,000)	(1,654,514)	300,000	-	-	(4,097)	(14,291,913)	-	-	-	-
Transfer in from Children Initiatives Fund	-	-	-	-	-	(500,000)	-	(232,432)	(475,985)	(485,593)	(485,593)	(485,593)
Transfer to the Attorney General	-	42,981	706,646	395,633	4,824,306	8,658,454	16,946,271	2,945,182	259,108	750,010	262,007	264,367
Total Available	\$ -	\$ 42,981	\$ 706,646	\$ 395,633	\$ 4,824,306	\$ 8,658,454	\$ 16,946,271	\$ 2,945,182	\$ 259,108	\$ 750,010	\$ 262,007	\$ 264,367
Children's Cabinet Administration	-	-	(193,809)	(187,078)	(188,630)	(201,277)	(207,366)	(201,579)	(211,912)	(258,719)	(261,746)	(264,126)
Ending Balance	\$ -	\$ 42,981	\$ 512,837	\$ 208,555	\$ 4,635,676	\$ 8,457,177	\$ 16,738,905	\$ 2,743,603	\$ 47,196	\$ 47,196	\$ 47,196	\$ 261

* The informal revenue estimating group estimated FY 2013 receipts at \$55.8 million, the same level as FY 2012.